

DATE OF ISSUE

18.09.2023

13.03.2026

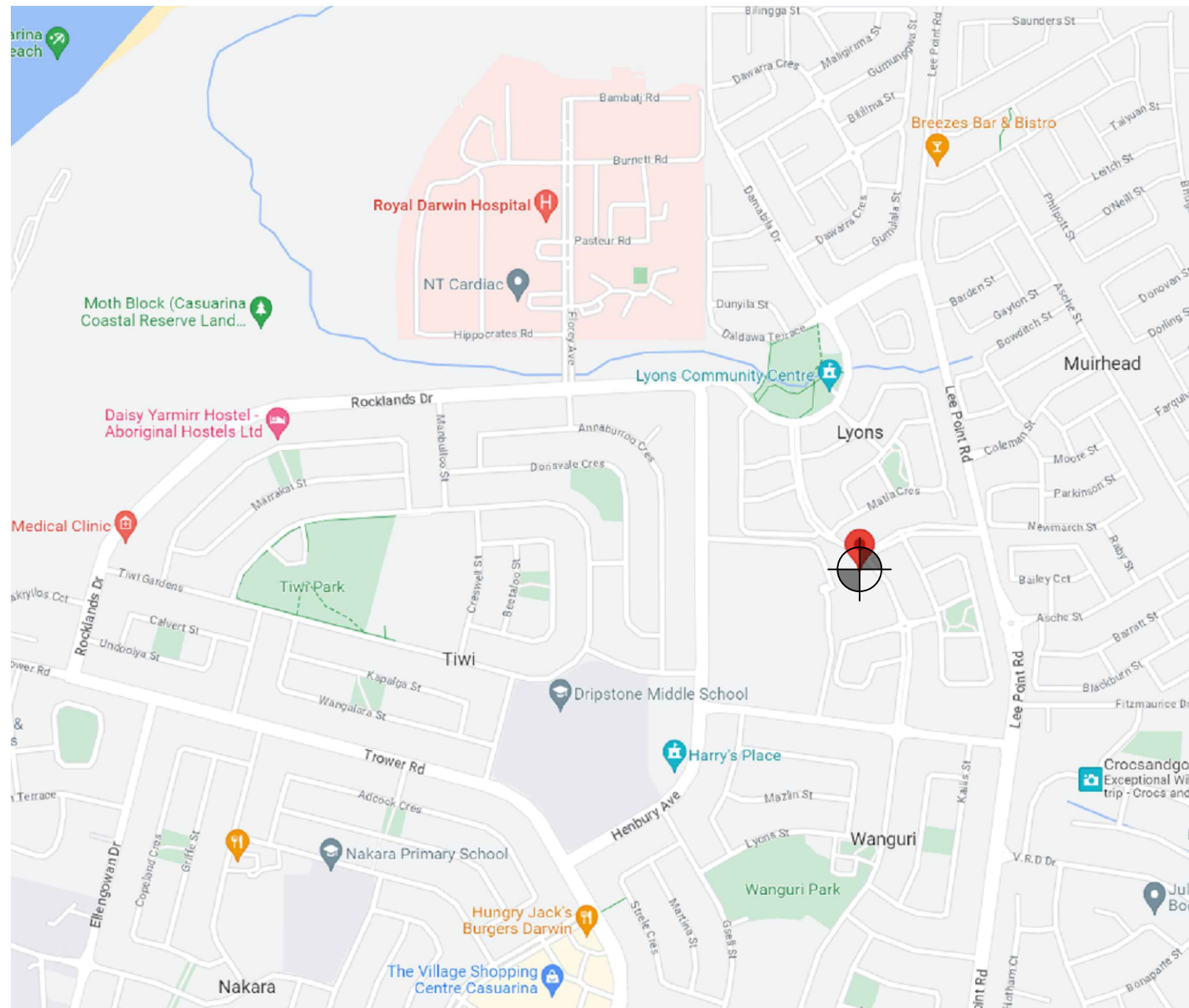
22.04.2026

### DRAWING REGISTER

AD810-003-00	COVER SHEET + DRAWING REGISTER	A-1	A-2	A-3						
--------------	--------------------------------	-----	-----	-----	--	--	--	--	--	--

### GENERAL DRAWINGS

AD810-003-P1	DRAFT SITE LAYOUT	A-1	A-2	A-3						
AD810-003-P2	DRAFT SITE SETOUT PLAN	A-1	A-2	A-3						
AD810-003-P3	DRAFT SITE ELEVATION	A-1	A-2	A-3						



LOCALITY PLAN  
NOT TO SCALE

# MUIRHEAD

28 TAMBLING TERRACE,  
LYONS,  
NT 0810

SITE ID: AD810-003



## waveconn

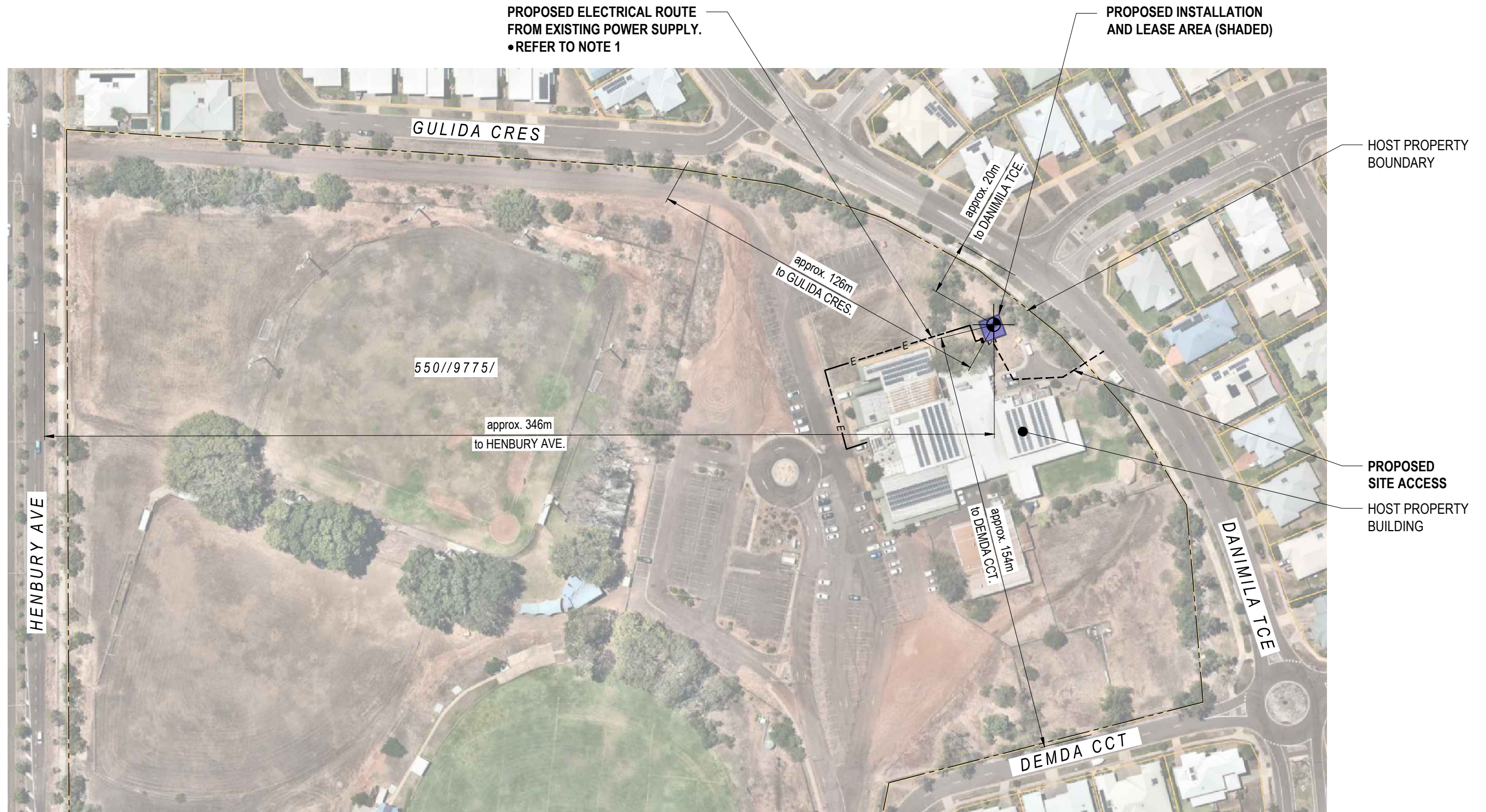
Suite 3.03, Level 3  
347 Kent Street, Sydney, NSW 2000  
[www.waveconn.com](http://www.waveconn.com)

FOR APPROVAL

DRAWING No.  
AD810-003 - 00



DATUM POINT	GDA94 CO-ORDINATES	
	LATITUDE	-12.36289
	LONGITUDE	130.88904



**SITE LAYOUT**  
SCALE 1 : 1500

**NOTE:**

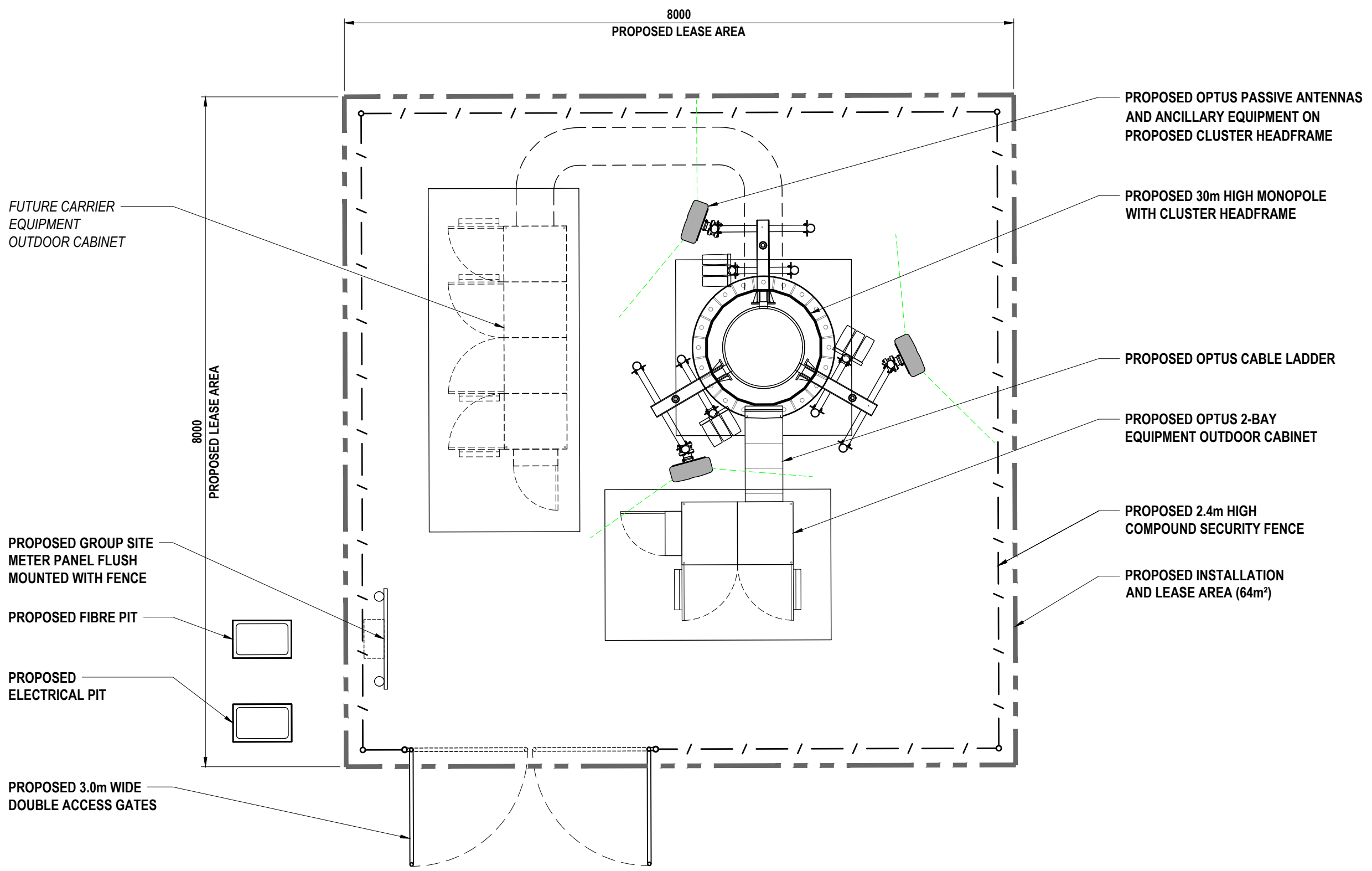
1. PROPOSED ELECTRICAL SUPPLY ROUTE SHOWN INDICATIVELY ONLY AND IS SUBJECT TO POWER AUTHORITY DESIGN AND APPROVAL.

A-3	22.04.2026	ISSUED FOR APPROVAL	JY	DL	PR
A-2	13.03.2026	ISSUED FOR APPROVAL	JY	DL	PR
A-1	18.09.2023	ISSUED FOR APPROVAL	EW	EW	MH
REVISION	DATE	REVISION DESCRIPTION	DRAWN	DESIGNED	APPROVED

Suite 3.03, Level 3  
347 Kent Street, Sydney, NSW 2000  
[www.waveconn.com](http://www.waveconn.com)

AD810-003 MUIRHEAD  
28 TAMBLING TERRACE, LYONS, NT 0810

TITLE: DRAFT SITE LAYOUT		
DRAWING STATUS: FOR APPROVAL	DRAWING No. AD810-003-P1	REVISION A-3



- PROPOSED OPTUS PASSIVE ANTENNAS AND ANCILLARY EQUIPMENT ON PROPOSED CLUSTER HEADFRAME
- PROPOSED 30m HIGH MONOPOLE WITH CLUSTER HEADFRAME
- PROPOSED OPTUS CABLE LADDER
- PROPOSED OPTUS 2-BAY EQUIPMENT OUTDOOR CABINET
- PROPOSED 2.4m HIGH COMPOUND SECURITY FENCE
- PROPOSED INSTALLATION AND LEASE AREA (64m<sup>2</sup>)

FUTURE CARRIER EQUIPMENT OUTDOOR CABINET

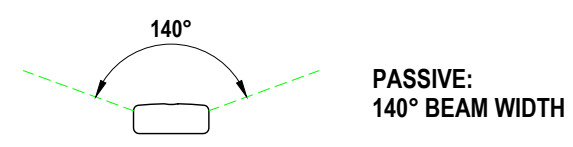
PROPOSED GROUP SITE METER PANEL FLUSH MOUNTED WITH FENCE

PROPOSED FIBRE PIT

PROPOSED ELECTRICAL PIT

PROPOSED 3.0m WIDE DOUBLE ACCESS GATES

ANTENNA BEAM WIDTH SETOUT:



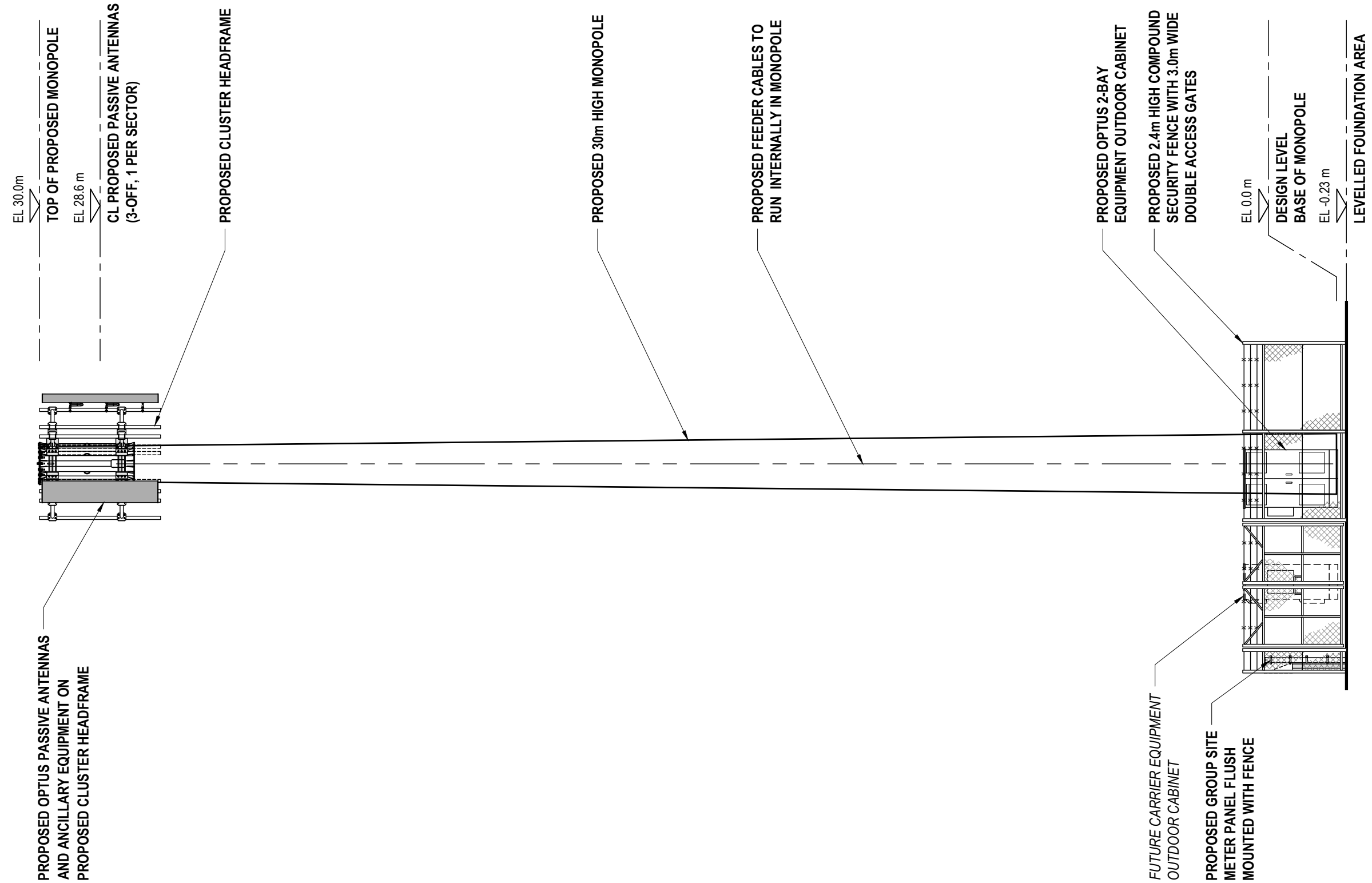
**SITE SETOUT PLAN**  
SCALE 1 : 50

REVISION	DATE	REVISION DESCRIPTION	DRAWN	DESIGNED	APPROVED
A-3	22.04.2026	ISSUED FOR APPROVAL	JY	DL	PR
A-2	13.03.2026	ISSUED FOR APPROVAL	JY	DL	PR
A-1	18.09.2023	ISSUED FOR APPROVAL	EW	EW	MH

Suite 3.03, Level 3  
347 Kent Street, Sydney, NSW 2000  
[www.waveconn.com](http://www.waveconn.com)

AD810-003 MUIRHEAD  
28 TAMBLING TERRACE, LYONS, NT 0810

TITLE: DRAFT SITE LAYOUT		
DRAWING STATUS: FOR APPROVAL	DRAWING No. AD810-003-P2	REVISION A-3



**SOUTHERN ELEVATION**  
SCALE 1 : 100

REVISION	DATE	REVISION DESCRIPTION	DRAWN	DESIGNED	APPROVED
A-3	22.04.2026	ISSUED FOR APPROVAL	JY	DL	PR
A-2	13.03.2026	ISSUED FOR APPROVAL	JY	DL	PR
A-1	18.09.2023	ISSUED FOR APPROVAL	EW	EW	MH



Suite 3.03, Level 3  
347 Kent Street, Sydney, NSW 2000  
[www.waveconn.com](http://www.waveconn.com)

**AD810-003 MUIRHEAD**  
28 TAMBLING TERRACE, LYONS, NT 0810

TITLE : <b>DRAFT SITE ELEVATION</b>		
DRAWING STATUS : <b>FOR APPROVAL</b>	DRAWING No. <b>AD810-003-P3</b>	REVISION <b>A-3</b>