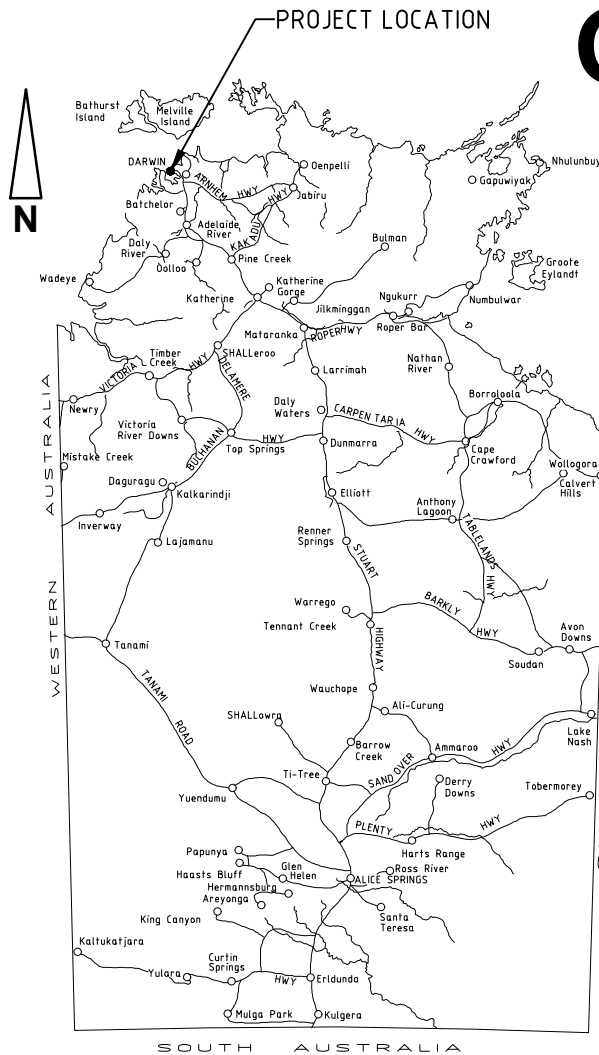


# 2CRU SUBDIVISION

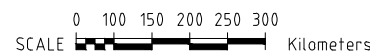
## GULLY REHAB DRY SEASON ESCP

PRINT IN COLOUR

PLOT: NT24082\_158704\_CADD14.2 DWGINT24102-WE05-ESC500.dwg



LOCALITY MAP



CLIENT	DEFENCE HOUSING AUSTRALIA	
SITE	2CRU SUBDIVISION	
ADDRESS	NT LOT 4873, LEE POINT	
AREA OF WORKS	APPROX. 2.3 HECTARES	
CONSTRUCTION PERIOD	MAY 2026 TO SEPTEMBER 2026	
CONTRACTOR CONTACTS	<ul style="list-style-type: none"> <li>• SITE MANAGER <b>TBC</b> <b>04XX XXX XXX</b></li> <li>• PROJECT MANAGER <b>TBC</b> <b>04XX XXX XXX</b></li> <li>• ENVIRONMENTAL OFFICER <b>TBC</b> <b>04XX XXX XXX</b></li> <li>• ESCP DESIGNER PAUL BRANDIS 08 8947 2476</li> </ul>	
	CPESC No. 9681	

DRAWINGS CERTIFIED IN ACCORDANCE WITH BEST PRACTICE EROSION & SEDIMENT CONTROL (BPESC) BY CERTIFIED PROFESSIONAL IN EROSION AND SEDIMENT CONTROL (CPESC).

NAME: PAUL BRANDIS  
 CPESC NO: 9681  
 SIGNATURE:

### WARNING

#### BEWARE OF UNDERGROUND SERVICES

The locations of underground services are approximate only and their exact position should be proven on site. No guarantee is given that all existing services are shown.

### GENERAL NOTES

- THIS IS A "DRY SEASON" ESCP PLAN FOR A SITE IN THE DARWIN TROPICAL REGION. WORKS PAST SEPTEMBER 30 WILL REQUIRE A "WET SEASON" ESCP.
- ALL WORKS SHALL BE UNDERTAKEN IN ACCORDANCE WITH THE APPROVED ESCP AND ASSOCIATED DEVELOPMENT CONDITIONS.
- EROSION AND SEDIMENT CONTROL MEASURES SHALL CONFORM TO THE STANDARDS AND SPECIFICATIONS CONTAINED IN:
  - THE APPROVED ESCP AND SUPPORTING DOCUMENTATION; AND
  - THE LATEST VERSION OF INTERNATIONAL EROSION CONTROL ASSOCIATION (IECA) GUIDELINES, IF THE STANDARDS AND SPECIFICATIONS ARE NOT CONTAINED IN THE APPROVED ESCP.
- WITHIN THEIR AREA OF WORKS, CONTRACTOR SHALL BE RESPONSIBLE FOR IMPLEMENTATION, MONITORING AND MANAGEMENT OF ALL EROSION AND SEDIMENT CONTROL MEASURES TO THE SATISFACTION OF THE RELEVANT AUTHORITY.
- WITHIN THEIR AREA OF WORKS, CONTRACTOR SHALL TAKE ALL REASONABLE AND PRACTICABLE MEASURES TO CONTROL STORM WATER FLOW VELOCITIES, MINIMISE SOIL EROSION AND SEDIMENT RUNOFF, AND MITIGATE ENVIRONMENTAL HARM.
- UNEXPECTED CIRCUMSTANCES OR LARGE STORM EVENTS MAY NECESSITATE AMENDMENT OF THE ESCP. IN THE EVENT THAT SITE CONDITIONS CHANGE SIGNIFICANTLY FROM THOSE CONSIDERED WITHIN THE APPROVED ESCP, A REVISED EROSION AND SEDIMENT CONTROL PLAN (ESCP) SHALL BE PREPARED AND CERTIFIED BY A CPESC, AND SUBMITTED FOR APPROVAL TO THE RELEVANT AUTHORITY WITH VARIATIONS IN EROSION AND SEDIMENT CONTROL MEASURES IMPLEMENTED.
- WHERE THERE IS HIGH PROBABILITY OF ENVIRONMENTAL HARM OCCURRING DUE TO SEDIMENT LEAVING THE SITE, CONTRACTOR SHALL IMPLEMENT ALL REASONABLE AND PRACTICABLE MEASURES REQUIRED TO MITIGATE SUCH HARM, INCLUDING IMPLEMENTATION OF APPROPRIATE ADDITIONAL CONTROL MEASURES, WITH THE ESCP AMENDED AS SOON AS POSSIBLE AND RE-SUBMITTED FOR APPROVAL TO THE RELEVANT AUTHORITY.
- CONTRACTOR SHALL MAINTAIN SUFFICIENT EROSION AND SEDIMENT CONTROL MATERIALS ON SITE FOR SHORT NOTICE REPAIRS.
- CONTRACTOR SHALL MONITOR THE WORKS AREA WEEKLY, OR DAILY DURING RAINFALL, AND ADAPT ESC PRACTICES AS REQUIRED TO MAINTAIN THE REQUIRED PERFORMANCE STANDARD.
- A CERTIFIED PROFESSIONAL IN EROSION AND SEDIMENT CONTROL (CPESC) SHALL BE ENGAGED TO UNDERTAKE INSPECTIONS DURING EXECUTION OF THE WORKS TO ENSURE THAT NOMINATED CONTROLS ARE BEING APPROPRIATELY INSTALLED AND MAINTAINED, AS WELL AS TO REVIEW ANY NEED TO AMEND THE ESCP DESIGN TO ADAPT TO CHANGING SITE OR CLIMATIC CONDITIONS. REFER INSPECTION SCHEDULE.

### INSPECTION SCHEDULE

INSPECTION	MONTH	DESCRIPTION
1	MAY	START UP MEETING WITH DHA AND CONTRACTOR
2	JUN	MONTHLY AUDIT
3	JUL	MONTHLY AUDIT
4	AUG	MONTHLY AUDIT
5	SEP	FINAL INSPECTION

**NOTE:** ONCE SCHEDULE CONFIRMED, CONSULT ESCP DESIGNER.

### SCHEDULE OF DRAWINGS

DRAWING NO.	DRAWING DESCRIPTION
WE05-ESC500	DRY SEASON EROSION AND SEDIMENT CONTROL PLAN - COVER SHEET AND LOCALITY PLAN
WE05-ESC501	DRY SEASON EROSION AND SEDIMENT CONTROL PLAN - NOTES SHEET
WE05-ESC502	DRY SEASON EROSION AND SEDIMENT CONTROL PLAN - EROSION RISK ASSESSMENT AND GENERAL ARRANGEMENT PLAN
WE05-ESC503	DRY SEASON EROSION AND SEDIMENT CONTROL PLAN - SITE ESTABLISHMENT AND CLEARING
WE05-ESC504	DRY SEASON EROSION AND SEDIMENT CONTROL PLAN - FINISHED SURFACES PLAN
WE05-ESC505	DRY SEASON EROSION AND SEDIMENT CONTROL PLAN - TYPICAL SECTION AND DETAILS

### IECA SCHEDULE OF STANDARD DRAWINGS

	IECA STANDARD DRAWINGS - DRAINAGE CONTROLS
LS-01	LEVEL SPREADER
RCD-01	CHECK DAMS
	IECA STANDARD DRAWINGS - EROSION CONTROLS
GRAVEL-01	GRAVELLING
	IECA STANDARD DRAWINGS - SEDIMENT CONTROLS
EXIT-01	ROCK PAD
EXIT-02	ROCK PAD
SF-01	SEDIMENT FENCE
SF-02	SEDIMENT FENCE NOTES
MB-01	MULCH FILTER BERM

IECA STANDARD DRAWINGS MAY BE ACCESSED VIA:  
<https://austieca.com.au/resources/resources-list/bpesc-document/standard-drawings>

### LEGEND

#### EROSION AND SEDIMENT CONTROL

- LIMIT OF CLEARING
- NO GO ZONE
- REVEGETATION (REFER LANDSCAPING DRGS)
- GRAVEL (REFER IECA STD DRG GRAVEL-01)
- EXISTING SURFACE CONTOURS (0.5m) INTERVAL
- DESIGN CONTOUR (0.25m) INTERVAL
- STORMWATER FLOW PATH
- CLEANWATER DIVERSION BANK (REFER DETAIL ON WE05-ESC505)
- SEDIMENT FENCE (REFER IECA STD DRG SF-01 AND SF-02)
- MULCH BERM (REFER IECA STD DRG MB-01)
- EARTH BUND (REFER DETAIL ON WE05-ESC505)
- STORMWATER FLOW DIRECTION
- LEVEL SPREADER (REFER IECA STD DRG LS-01)
- CHUTE (REFER DETAIL ON WE05-ESC505)
- ROCK FILTER DAM (REFER DETAIL ON WE05-ESC505)
- ROCK CHECK DAM (REFER IECA STD DRG RCD-01)
- ROCK PAD/SHAKER GRID (REFER IECA STD DRG EXIT-01 AND EXIT-02)

No	DATE	INITIAL	AMENDMENT
0	26/03/26	PC	ISSUED FOR CONSTRUCTION

COPYRIGHT  
 The concepts and information contained in this document are the copyright of BYRNE CONSULTANTS.  
 Use or copying of the document in whole or in part without the written permission of BYRNE CONSULTANTS constitutes an infringement of copyright.



APPROVED: PB  
 DRAWN: CHECKED  
 AD: PC  
 DESIGNED: CHECKED  
 PC: PB

ABN 78 124 388 192  
 P.O.Box 43420 Casuarina NT 0811  
 Ph. 08 89472476 Fax: 08 89475098

TITLE		2CRU SUBDIVISION - GULLY REHAB WORKS	
		NT LOT 4873, LEE POINT	
		DRY SEASON EROSION SEDIMENT CONTROL PLAN	
		COVER SHEET AND LOCALITY PLAN	
SCALE	PROJECT No	DRAWING No	AMDT
AS SHOWN	NT24102	WE05-ESC500	0

PLOTTED ON: 25/May/2026 10:53 AM  
 USER: ALFIO.DILETTOSO  
 FILE LOCATION: C:\12sas\ssdata\BYRNE-TMS\NT24102 - WE05 - 2CRU Stage 2 Outfall and Gully Rehab-NT24082\_158704\_CADD14.2 DWGINT24102-WE05-ESC500.dwg

**SITE MANAGEMENT**

1. CONSTRUCTION ACTIVITIES SHALL BE STAGED WHERE PRACTICABLE SO THAT LAND DISTURBANCE IS CONFINED TO AREAS OF MANAGEABLE SIZE AND THE EXTENT AND DURATION OF SOIL EXPOSURE IS LIMITED. EROSION AND SEDIMENT CONTROL MEASURES SHALL BE PROGRESSIVELY IMPLEMENTED TO SUIT.
2. ALL OFFICE AND OPERATIONAL ACTIVITIES SHALL BE LOCATED SUCH THAT ALL LIQUID EFFLUENT (E.G. WASH-DOWN WATER) IS TOTALLY CONTAINED AND TREATED WITHIN THE SITE.
3. ALL LIQUIDS AND CHEMICALS SHALL BE STORED AND HANDLED ON-SITE IN ACCORDANCE WITH RELEVANT STANDARDS, INCLUDING AS1940 - THE STORAGE AND HANDLING OF FLAMMABLE AND COMBUSTIBLE LIQUIDS.
4. SITE SPOILS SHALL BE LAWFULLY DISPOSED OF IN A MANNER THAT DOES NOT RESULT IN ONGOING SOIL EROSION OR ENVIRONMENTAL HARM.
5. NO LIQUID EFFLUENT IS PERMITTED TO BE DISPOSED OF ON SITE.
6. TRACKING OF SEDIMENTS ONTO ROADS EXTERNAL OF THE SITE IS NOT PERMITTED. ENTRY/EXIT TO SITE SHALL BE RESTRICTED TO DEFINED POINTS, WITH SUPPLEMENTARY ENTRY/EXIT SEDIMENT CONTROLS INSTALLED.

**CLEARING AND GRUBBING**

1. CLEARING WORKS SHALL BE UNDERTAKEN IN ACCORDANCE WITH APPROVALS AND PERMIT CONDITIONS.
2. MINIMISE DISTURBANCE TO ONLY THOSE AREAS REQUIRED FOR CONSTRUCTION. ALL OTHER AREAS SHALL BE FLAGGED AS "NO-GO ZONE"
3. ALL CLEARING SHALL BE CONDUCTED IN ACCORDANCE WITH FEDERAL, TERRITORY AND LOCAL GOVERNMENT ENVIRONMENTAL POLICIES.
4. BEFORE CLEARING COMMENCES, ALL SACRED SITES, RESTRICTED WORKS AREAS AND AREAS OF VEGETATION NOMINATED FOR PROTECTION SHALL BE CLEARLY IDENTIFIED AND MARKED ON SITE (BY FLAGGING OR FENCING) AND INSPECTED BY THE RELEVANT AUTHORITY. CLEARING OF VEGETATION SHALL BE RESTRICTED TO THE NOMINATED AREAS. THE CONTRACTOR SHALL TAKE ALL REASONABLE AND PRACTICABLE MEASURES TO MITIGATE RISK OF UNNECESSARY LAND CLEARING AND PREVENT REMOVAL OR DISTURBANCE OF ALL VEGETATION AND GROUND COVERS (ORGANIC OR INORGANIC) INTENDED TO BE RETAINED.
5. WHERE CLEARING IS REQUIRED FOR THE PURPOSE OF INSTALLING EROSION AND SEDIMENT CONTROL MEASURES, EXTENTS OF CLEARING SHALL BE KEPT TO A MINIMUM.
6. THE CONTRACTOR SHALL TAKE ALL PRACTICABLE AND REASONABLE MEASURES DURING CLEARING OPERATIONS TO PREVENT THE FORMATION OF FLOW PATHS THAT CAN CONCENTRATE SURFACE RUNOFF AND CREATE POTENTIAL FOR EROSION.

**TOPSOIL AND STOCKPILE MANAGEMENT**

1. SITE OF STOCKPILES, INCLUDING EXTENT AND LIMIT OF CLEARING, SHALL BE AGREED WITH THE RELEVANT AUTHORITY.
2. STRIPPED TOPSOIL SHALL BE STOCKPILED FOR REUSE. TOPSOIL STOCKPILE HEIGHTS SHALL BE 1.5m MAX. ALL OTHER STOCKPILE HEIGHTS SHALL BE 3.0m MAX WITH 1 IN 4 BATTERS MAX.
3. TOPSOIL STOCKPILE SHALL NOT BE COMPACTED OR WHEEL ROLLED.
4. AVOID PLACEMENT OF STOCKPILES (WHERE PRACTICABLE) WITHIN 50m OF ANY WATERWAYS.
5. THE FOLLOWING CONTROLS SHALL BE IMPLEMENTED FOR STOCKPILES OF ERODIBLE MATERIAL:
  - A. STOCKPILES SHALL BE LOCATED AT LEAST 2m FROM ANY RETAINED VEGETATION AND DRAINAGE LINES.
  - B. EARTH DIVERSION BUNDS SHALL BE INSTALLED IMMEDIATELY UP-SLOPE OF THE STOCKPILE, WHERE THE CONTRIBUTING CATCHMENT EXCEEDS 1500m<sup>2</sup> AND SHALL BE MANAGED TO AVOID CONCENTRATING FLOW CAUSING EROSION.
  - C. SEDIMENT CONTROL MEASURES SHALL BE INSTALLED DOWNSTREAM OF THE STOCKPILE (E.G. MULCH BERMS OR SEDIMENT FENCES).
  - D. TRENCH SPOIL AND BACKFILL MATERIAL SHALL GENERALLY BE STOCKPILED A MINIMUM OF 1.0m FROM OPEN TRENCHES.
6. STOCKPILE OF MATERIALS VULNERABLE TO EROSION SHALL BE COVERED IF REQUIRED.
7. SUITABLY STABILISE STOCKPILES OF ERODIBLE MATERIAL WHERE WORKS ARE EXPECTED TO BE SUSPENDED FOR A PERIOD EXCEEDING 30 DAYS IN THE DRY SEASON, 10 DAYS IN THE WET SEASON, WHEN RAINFALL IS REASONABLY POSSIBLE.

**SURFACE WATER AND DRAINAGE CONTROL**

1. ALL DRAINAGE CONTROL MEASURES SHALL BE APPLIED AND MAINTAINED IN ACCORDANCE WITH THE APPROVED ESCP DRAWINGS.
2. DURING THE CONSTRUCTION PHASE, ALL REASONABLE AND PRACTICABLE MEASURES SHALL BE IMPLEMENTED TO:
  - A. DIVERT CLEAN SURFACE WATERS AWAY FROM THE SITE IN A MANNER THAT MINIMISES EROSION OR CONTAMINATION OF WATER.
  - B. CONTROL FLOW VELOCITIES AND PREVENT SOIL EROSION ALONG DRAINAGE PATHS, INCLUDING ENTRY/EXIT POINTS; AND ENSURE ALL WATERS ARE DISCHARGED ONTO STABLE LAND, IN A NON-EROSIVE MANNER, AND AT A LEGAL POINT OF DISCHARGE.
  - C. MANAGEMENT OF DRAINAGE IS TO AVOID CONCENTRATION OF FLOW.
  - D. OPEN PROFILE TRAPEZOIDAL DRAINS INSTEAD OF "V" DRAINS SHALL BE USED WHERE PRACTICABLE.
3. CONTROL WATER MOVEMENT THROUGH THE WORKS AREA; FLOW DIVERSION BANKS AND DRAINS SHALL BE INSTALLED AS PER DRAWINGS.

**EROSION CONTROL AND SURFACE STABILISATION**

1. ALL EROSION CONTROL MEASURES SHALL BE APPLIED AND MAINTAINED IN ACCORDANCE WITH THE APPROVED ESCP DRAWINGS.
2. SYNTHETIC EROSION CONTROL TREATMENTS SHALL NOT BE USED IF SUCH MATERIALS ARE LIKELY TO CAUSE ENVIRONMENTAL HARM.
3. SUITABLY STABILISE AREAS WHERE WORKS ARE EXPECTED TO BE SUSPENDED FOR A PERIOD EXCEEDING 30 DAYS IN THE DRY SEASON, 10 DAYS IN THE WET SEASON, WHEN RAINFALL IS REASONABLY POSSIBLE.

**DUST CONTROL**

1. ALL DUST CONTROL MEASURES SHALL BE APPLIED AND MAINTAINED IN ACCORDANCE WITH APPROVED ESCP DRAWINGS.
2. CONTRACTOR SHALL BE RESPONSIBLE FOR THE EFFECTIVE CONTROL OF ALL DUST AND WINDBORNE MATERIAL EMANATING FROM THE SITE THROUGHOUT THE CONSTRUCTION PERIOD.
3. CONTRACTOR SHALL IMPLEMENT ALL MEASURES NECESSARY TO MINIMISE WIND EROSION AND PREVENT MATERIAL FROM THE SITE BEING BLOWN OVER OR ONTO PROPERTY OUTSIDE OF THE SITE. MEASURES SHALL INCLUDE BUT NOT BE LIMITED TO:
  - A. MINIMISING TRAFFIC MOVEMENTS ON DISTURBED SURFACES AND LIMITING VEHICLE SPEEDS WHERE NECESSARY.
  - B. MAINTAINING EXPOSED SURFACES IN A MOIST CONDITION THROUGH FREQUENT WATERING, OR APPLICATION OF TRAFFICABLE POLYMERS WHERE APPROPRIATE.
  - C. PROGRAMMING WORKS TO MINIMISE THE LIFE OF SOIL STOCKPILES, OR STABILISING LONG TERM STOCKPILES.
4. DURING DRY PERIODS, UTILISE WATER TRUCK TO WATER DOWN WORKS SURFACES TO MINIMISE DUST GENERATION. DUST SUPPRESSION IS TO BE IMPLEMENTED BY SITE SUPERVISOR AS REQUIRED BY VISUAL INSPECTION.

**SEDIMENT CONTROL**

1. ALL SEDIMENT CONTROL MEASURES SHALL BE APPLIED AND MAINTAINED IN ACCORDANCE WITH APPROVED ESCP DRAWINGS.
2. ALL REASONABLE AND PRACTICABLE MEASURES SHALL BE TAKEN TO PREVENT, OR AT LEAST MINIMISE, THE RELEASE OF SEDIMENT FROM THE SITE. SEDIMENT CONTROL DEVICES SHALL BE INSTALLED TO TRAP SEDIMENT AS CLOSE TO THE SOURCE AS PRACTICABLE.
3. SEDIMENT CONTROL DEVICES SHALL NOT PRESENT A SAFETY HAZARD FOR SITE WORKERS AND/OR THE PUBLIC.
4. SEDIMENT CONTROLS ARE TO REMAIN IN PLACE UNTIL THE ACTIVITIES ARE FINISHED AND AREAS ARE STABILISED.
5. ALL SEDIMENT TO BE COLLECTED AND REMAIN ONSITE AND DISPOSED OFF AT A LOCATION TO BE NOMINATED BY THE RELEVANT AUTHORITY.

**DEWATERING**

1. CONTRACTOR SHALL MITIGATE SEDIMENT RELATED ENVIRONMENTAL HARM AND/OR IMPACT TO STORMWATER INFRASTRUCTURE RESULTING FROM DEWATERING ACTIVITIES.
2. FLOW DIVERSION BARRIERS, OR OTHER APPROPRIATE SYSTEMS, SHALL BE USED TO MINIMISE THE QUANTITY OF WATER ENTERING EXCAVATIONS.
3. SEDIMENT LADEN WATER SHALL NOT BE DISCHARGED OFF-SITE WITHOUT FIRST BEING TREATED SATISFACTORILY TO REQUIREMENTS OF THE RELEVANT AUTHORITY. WHERE NOT SPECIFIED, DISCHARGED WATER SHALL MEET THE FOLLOWING REQUIREMENTS: MAX 75 NTU, PH 6.5 TO 8.0.

**REVEGETATION AND REHABILITATION**

1. ALL DISTURBED AREAS AND EARTHWORKS MUST BE PROGRESSIVELY REHABILITATED ONCE WORKS ARE COMPLETED, SO FAR AS REASONABLY PRACTICABLE. REFER PROJECT CIVIL AND LANDSCAPING DRAWINGS FOR FINISHED SURFACE DETAILS.

**MONITORING**

1. ALL EROSION AND SEDIMENT CONTROL MEASURES SHALL BE INSPECTED:
  - A. AT LEAST DAILY (WHEN WORK IS OCCURRING ON-SITE);
  - B. AT LEAST WEEKLY (WHEN WORK IS NOT OCCURRING ON-SITE);
  - C. WITHIN 24 HOURS PRIOR TO EXPECTED RAINFALL; AND
  - D. WITHIN 18 HOURS FOLLOWING A RAINFALL EVENT OF SUFFICIENT INTENSITY AND DURATION TO CAUSE RUNOFF ON-SITE.
2. EROSION AND SEDIMENT CONTROLS ARE DESIGNED IN ACCORDANCE WITH IECA BEST PRACTICE GUIDELINES, USING AN EROSION RISK ASSESSMENT TO CONFIRM THE TYPE OF CONTROLS REQUIRED AROUND EACH SUB-CATCHMENT OF THE SITE. WHERE TYPE 2/3 CONTROLS ARE APPLIED, RELEASE OF SOME TURBID WATER OFFSITE THROUGH THESE CONTROLS IS TO BE EXPECTED.
3. ANY INCIDENT WHICH RESULTS IN UNAUTHORISED DISCHARGE OF SEDIMENT OR SEDIMENT LADEN WATER TO A WATERWAY, OR HAS POTENTIAL TO RESULT IN SERIOUS ENVIRONMENTAL HARM, SHALL BE REPORTED TO THE NT ENVIRONMENT PROTECTION AUTHORITY (NTEPA) WITHIN 24 HOURS VIA THE POLLUTION HOTLINE ON 1800 064 567.

**MAINTENANCE**

1. ALL EROSION AND SEDIMENT CONTROL MEASURES, INCLUDING DRAINAGE CONTROL MEASURES, SHALL BE MAINTAINED IN PROPER WORKING ORDER AT ALL TIMES DURING THEIR OPERATIONAL LIVES.
2. CONTRACTOR SHALL REPAIR ANY DAMAGED EROSION AND SEDIMENT CONTROL MEASURES, AND MAKE GOOD TO THE SATISFACTION OF THE RELEVANT AUTHORITY.
3. CONTRACTOR SHALL ENSURE SEDIMENT CONTROL DEVICES ARE DE-SILTED AND MADE FULLY OPERATIONAL AS SOON AS PRACTICABLE AFTER SEDIMENT-PRODUCING EVENTS, TO ENSURE THE SEDIMENT RETENTION CAPACITY IS MAINTAINED ABOVE 80% OF ITS DESIGN RETENTION CAPACITY.
4. ALL MATERIALS, WHETHER LIQUID OR SOLID, REMOVED FROM SEDIMENT CONTROL DEVICES AND PLACES OF SEDIMENT DEPOSITION, SHALL BE DISPOSED OF IN AN APPROVED MANNER THAT DOES NOT CAUSE FURTHER SOIL EROSION OR ENVIRONMENTAL HARM. MATERIALS SHALL BE DISPOSED OF IN A LOCATION THAT PREVENTS MATERIALS RE-ENTERING THE SYSTEM.
5. ALL SEDIMENT DEPOSITED OFFSITE AS A DIRECT RESULT OF CONSTRUCTION ACTIVITIES SHALL BE REMOVED AND THE AREA APPROPRIATELY CLEANED / REHABILITATED AS SOON AS PRACTICABLE.

PLOTTED ON: 25/May/2026 10:53 AM  
USER: ALFIO.DILETTOSO  
FILE LOCATION: C:\12\sis\data\BYRNE-TMS\NT24102 - WE05 - 2CRU Stage 2 Outfall and Gully Rehab (NT24082)\_159704\_CADD\4.2 DWG\NT24102-WE05-ESC500.dwg

PRINT IN COLOUR

No	DATE	INITIAL	AMENDMENT
0	26/03/26	PC	ISSUED FOR CONSTRUCTION

**COPYRIGHT**  
The concepts and information contained in this document are the copyright of BYRNE CONSULTANTS.  
Use or copying of the document in whole or in part without the written permission of BYRNE CONSULTANTS constitutes an infringement of copyright.

CLIENT



APPROVED	
PB	
DRAWN	CHECKED
AD	PC
DESIGNED	CHECKED
PC	PB

TITLE <b>2CRU SUBDIVISION - GULLY REHAB WORKS</b> NT LOT 4873, LEE POINT DRY SEASON EROSION SEDIMENT CONTROL PLAN NOTES SHEET			
SCALE	PROJECT No	DRAWING No	AMDT
AS SHOWN	<b>NT24102</b>	<b>WE05-ESC501</b>	<b>0</b>

PRINT IN COLOUR

CATCHMENT ID	AREA (HA)	R	K	SLOPE LENGTH (m)	SLOPE (%)	LS	P	C	May (t/ha/month)	Jun (t/ha/month)	Jul (t/ha/month)	Aug (t/ha/month)	Sep (t/ha/month)	A (t/ha/yr)	A (t/yr)	CONTROL
Major Gully	1.84	15724	0.053	10	25.0	1.88	1.3	1.00	20.73	1.94	0.65	6.09	10.36	2,037	3,748	TYPE 1
Minor Gully	0.04	15724	0.053	5	16.7	0.80	1.3	1.00	8.82	0.83	0.28	2.59	4.41	867	35	TYPE 3

ISSUED FOR CONSTRUCTION

## EROSION RISK ASSESSMENT

### DISPERSIVE SOIL MANAGEMENT

1. AS NEW WORK AREAS ARE OPENED UP, THE CONTRACTOR SHALL UNDERTAKE TESTING TO DETERMINE WHETHER THE AREA CONTAINS DISPERSIVE SOILS. IF DISPERSIVE SOIL ARE ENCOUNTERED, CONTACT THE ESCP DESIGNER FOR FURTHER ADVICE.

### ERA NOTES

1. ERA HAS BEEN COMPLETED BASED ON TYPICAL SITE CATCHMENTS. THE RAINFALL EROSION FACTOR (R) WAS SOURCED FROM THE NTG PUBLISHED DATA.
2. K-VALUE WAS IDENTIFIED WITH REFERENCE TO THE GEOTECHNICAL REPORT (STANTEC - DC1603) LEE POINT STAGE 2 SUBDIVISION\_FINAL GI REPORT) FOR THE SITE. SILTY SANDY GRAVEL (GW) AND SANDY GRAVEL (GP) WERE IDENTIFIED IN TEST PITS.
3. LS FACTORS WERE DERIVED BASED ON WORST CASE GULLY EROSION / BATTER SLOPES.
4. THE EROSION RISK ASSESSMENT IDENTIFIES THAT TYPE 1 CONTROLS ARE REQUIRED (E.G. SEDIMENT BASINS) FOR THE MAJOR GULLIES DURING MAY AND SEPTEMBER. TYPE D SEDIMENT BASIN ARE PROPOSED THROUGH APPLICATION OF TEMPORARY EARTH BUNDS TO CONTAIN DIRTY WATER WITHIN WORKSITE. CONTRACTOR TO ENSURE MINIMUM VOLUMES ARE ACHIEVED AS SHOWN IN THE TABLE BELOW.

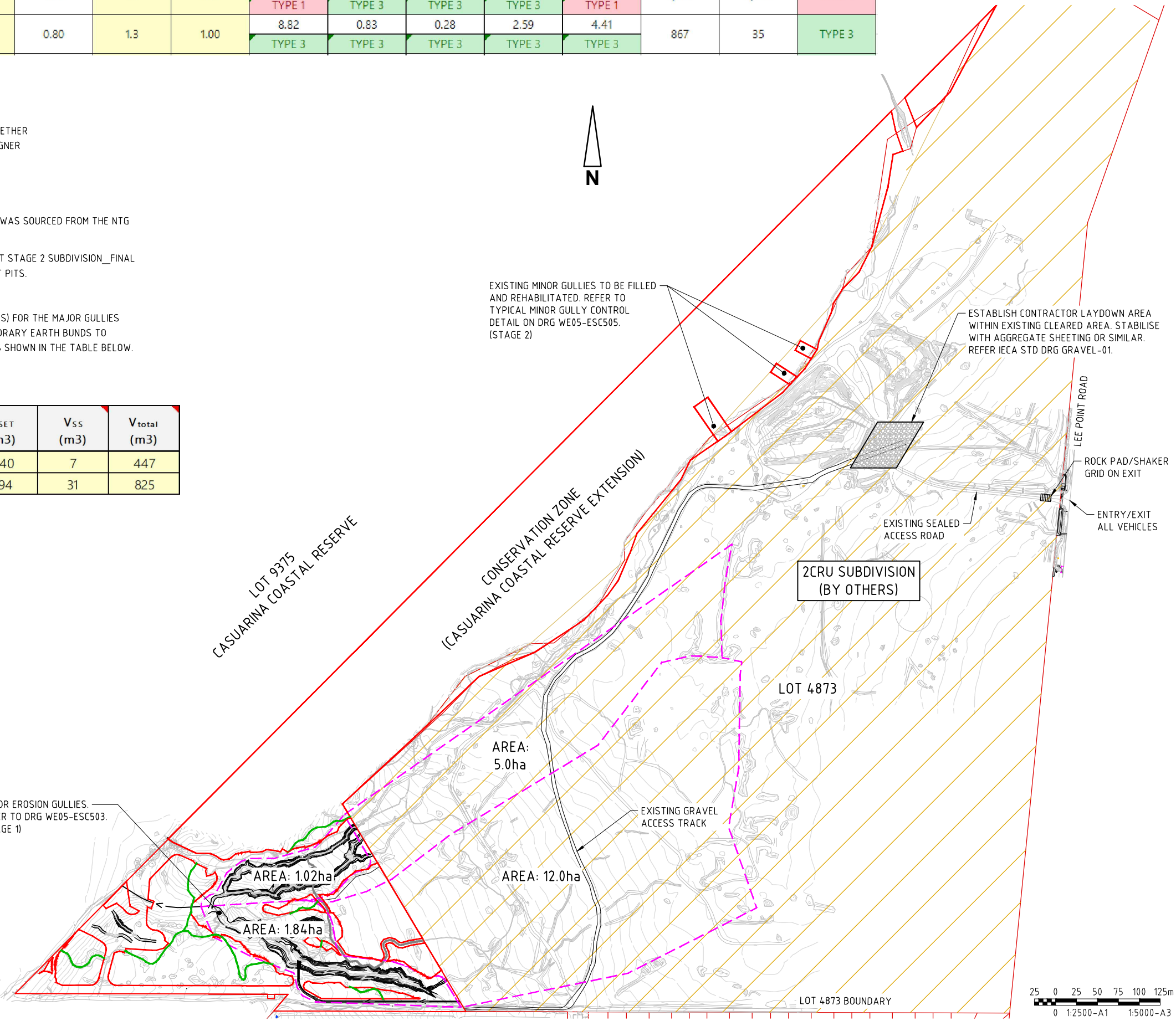
TABLE - SEDIMENT BASIN VOLUMES

BASIN ID	CATCH AREA (HA)	% ILE	R (5 DAY, X% ILE) (mm)	CV	V <sub>SET</sub> (m <sup>3</sup> )	V <sub>SS</sub> (m <sup>3</sup> )	V <sub>total</sub> (m <sup>3</sup> )
Major Gullies - Northern	1.02	85	58	0.74	440	7	447
Major Gullies - Southern	1.84	85	58	0.74	794	31	825

MAJOR EROSION GULLIES. REFER TO DRG WE05-ESC503. (STAGE 1)

EXISTING MINOR GULLIES TO BE FILLED AND REHABILITATED. REFER TO TYPICAL MINOR GULLY CONTROL DETAIL ON DRG WE05-ESC505. (STAGE 2)

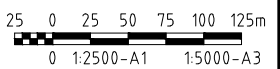
ESTABLISH CONTRACTOR LAYDOWN AREA WITHIN EXISTING CLEARED AREA. STABILISE WITH AGGREGATE SHEETING OR SIMILAR. REFER IECA STD DRG GRAVEL-01.



### WARNING

#### BEWARE OF UNDERGROUND SERVICES

The locations of underground services are approximate only and their exact position should be proven on site. No guarantee is given that all existing services are shown.



PLOTTED ON: 25/May/2026 10:53 AM

USER: ALFIO DILETTOSO

FILE LOCATION: C:\12\sis\data\BYRNE-TMS\NT24102 - WE05 - 2CRU Stage 2 Outfall and Gully Rehab (NT24082)\_159704\_CADD\4.2 DWG\NT24102-WE05-ESC500.dwg

No	DATE	INITIAL	AMENDMENT
0	26/03/26	PC	ISSUED FOR CONSTRUCTION

**COPYRIGHT**  
The concepts and information contained in this document are the copyright of BYRNE CONSULTANTS.  
Use or copying of the document in whole or in part without the written permission of BYRNE CONSULTANTS constitutes an infringement of copyright.

CLIENT

ABN 78 124 388 192  
P.O.Box 43420 Casuarina NT 0811  
Ph. 08 89472476 Fax: 08 89475098

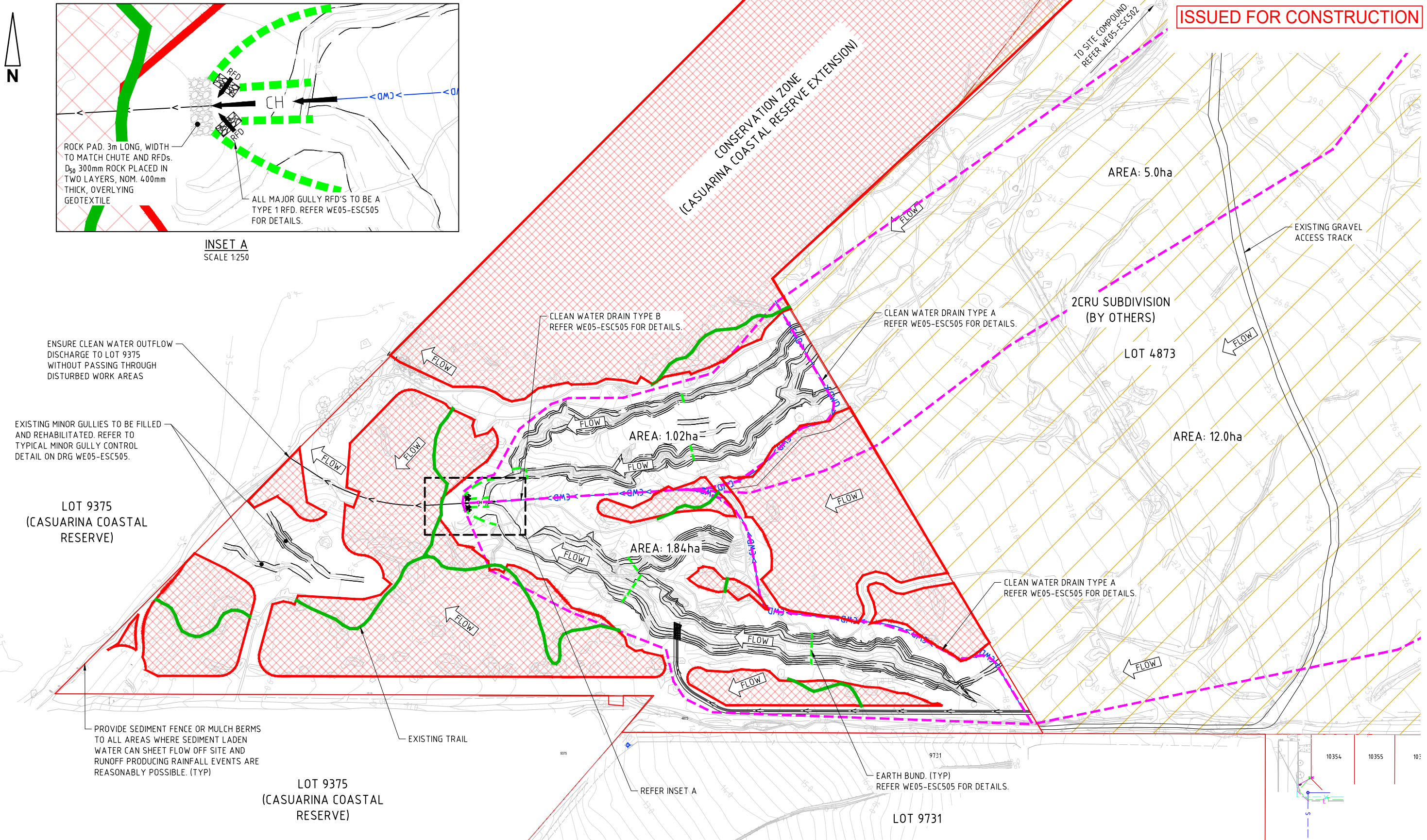
APPROVED	PB
DRAWN	CHECKED
DESIGNED	CHECKED
PC	PB

**TITLE**  
2CRU SUBDIVISION - GULLY REHAB WORKS  
NT LOT 4873, LEE POINT  
DRY SEASON EROSION SEDIMENT CONTROL PLAN  
EROSION RISK ASSESSMENT AND GA PLAN

SCALE: AS SHOWN    PROJECT No: **NT24102**    DRAWING No: **WE05-ESC502**    AMDT: **0**

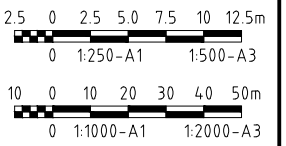
PRINT IN COLOUR

ISSUED FOR CONSTRUCTION



INSET A  
SCALE 1:250

PLAN  
SCALE 1:1000



ENSURE CLEAN WATER OUTFLOW DISCHARGE TO LOT 9375 WITHOUT PASSING THROUGH DISTURBED WORK AREAS

EXISTING MINOR GULLIES TO BE FILLED AND REHABILITATED. REFER TO TYPICAL MINOR GULLY CONTROL DETAIL ON DRG WE05-ESC505.

LOT 9375 (CASUARINA COASTAL RESERVE)

PROVIDE SEDIMENT FENCE OR MULCH BERMS TO ALL AREAS WHERE SEDIMENT LADEN WATER CAN SHEET FLOW OFF SITE AND RUNOFF PRODUCING RAINFALL EVENTS ARE REASONABLY POSSIBLE. (TYP)

LOT 9375 (CASUARINA COASTAL RESERVE)

REFER INSET A

EARTH BUND (TYP) REFER WE05-ESC505 FOR DETAILS.

LOT 9731

**WARNING**

**BEWARE OF UNDERGROUND SERVICES**

The locations of underground services are approximate only and their exact position should be proven on site. No guarantee is given that all existing services are shown.

PLOTTED ON: 25/May/2026 10:53 AM  
USER: ALFIO DILETTOSO  
FILE LOCATION: C:\12\sis\data\BYRNE-TMS\NT24102 - WE05 - 2CRU Stage 2 Outfall and Gully Rehab (NT24082)\_159704\_CADD\4.2 DWG\NT24102-WE05-ESC500.dwg

No	DATE	INITIAL	AMENDMENT
1	25/05/26	PD	RE-ISSUED FOR CONSTRUCTION
0	26/03/26	PC	ISSUED FOR CONSTRUCTION

**COPYRIGHT**  
The concepts and information contained in this document are the copyright of BYRNE CONSULTANTS.  
Use or copying of the document in whole or in part without the written permission of BYRNE CONSULTANTS constitutes an infringement of copyright.



APPROVED  
PB  
DRAWN  
AD  
DESIGNED  
PC

CHECKED  
PC  
CHECKED  
PB

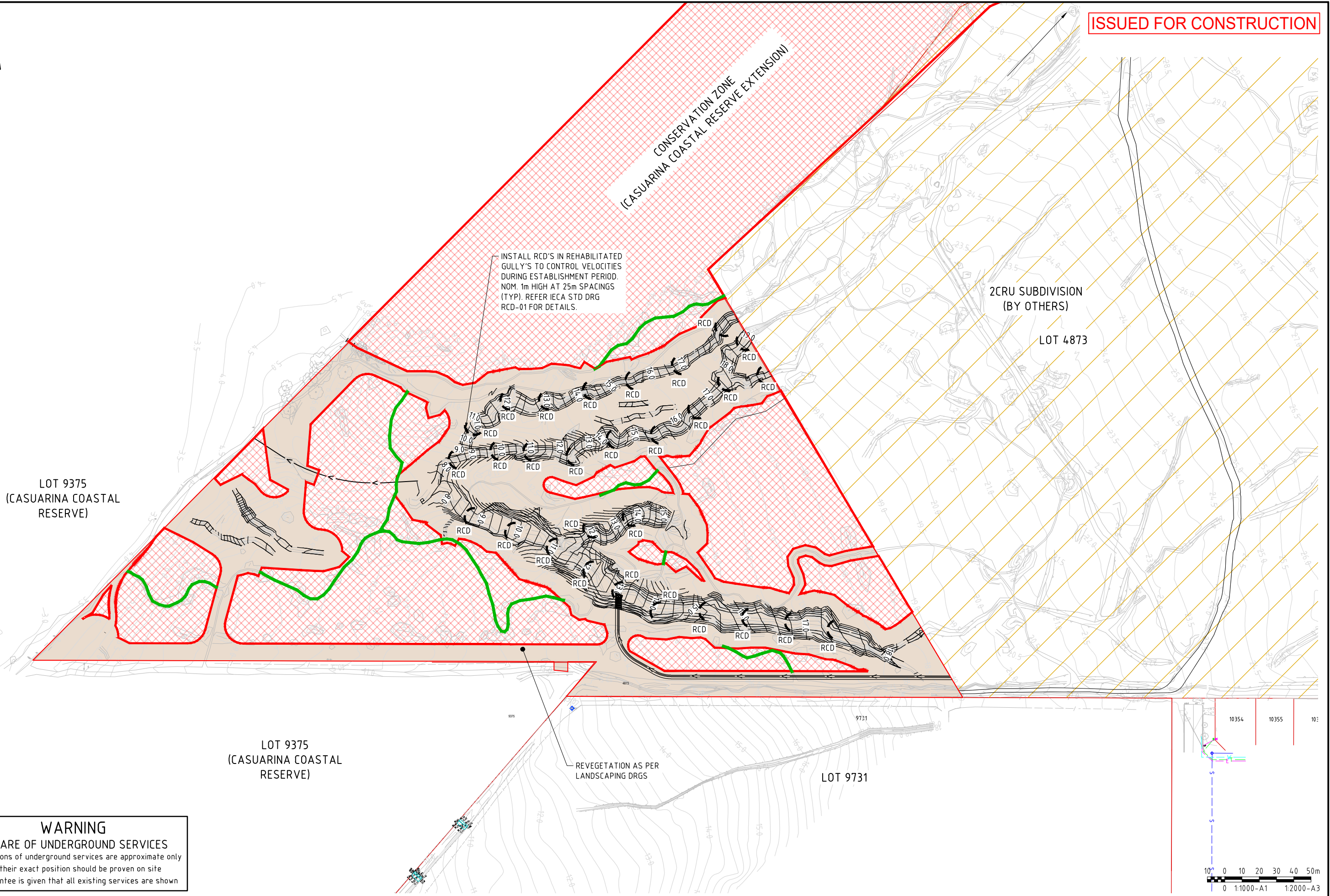
ABN 78 124 388 192  
P.O Box 4 3420 Casuarina NT 0811  
Ph. 08 89472476 Fax: 08 89475098

TITLE	<b>2CRU SUBDIVISION - GULLY REHAB WORKS</b>
	NT LOT 4873, LEE POINT
	DRY SEASON EROSION SEDIMENT CONTROL PLAN
	SITE ESTABLISHMENT AND CLEARING PLAN
SCALE	AS SHOWN
PROJECT No	NT24102
DRAWING No	WE05-ESC503
AMDT	1



PRINT IN COLOUR

PLOTTED ON: 25/May/2026 10:53 AM  
 USER: ALFIO.DILETTOSO  
 FILE LOCATION: C:\12\sis\data\BYRNE-TMS\NT24102 - WE05 - 2CRU Stage 2 Outfall and Gully Rehab (NT24082)\_159704\_CADD\4.2 DWG\NT24102-WE05-ESC500.dwg



**WARNING**  
 BEWARE OF UNDERGROUND SERVICES  
 The locations of underground services are approximate only  
 and their exact position should be proven on site  
 No guarantee is given that all existing services are shown

No	DATE	INITIAL	AMENDMENT
1	25/05/26	PD	RE-ISSUED FOR CONSTRUCTION
0	26/03/26	PC	ISSUED FOR CONSTRUCTION

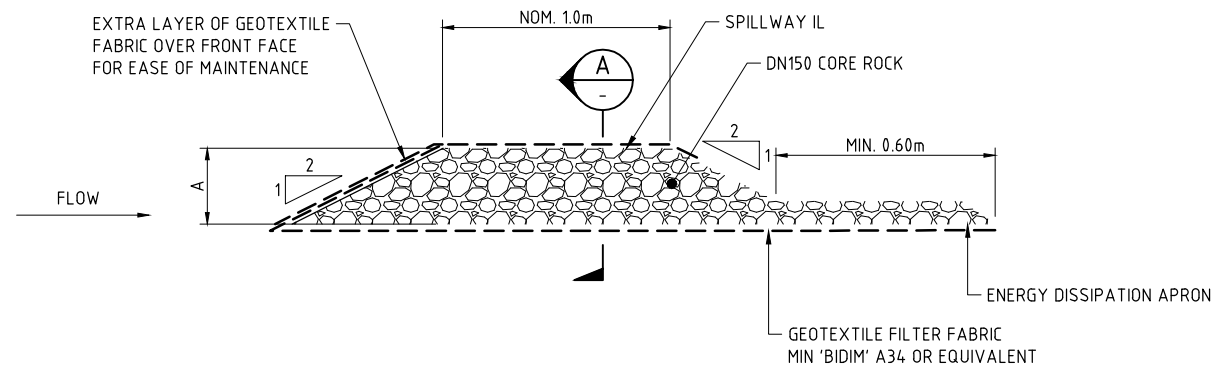
**COPYRIGHT**  
 The concepts and information contained in this document are the copyright of BYRNE CONSULTANTS.  
 Use or copying of the document in whole or in part without the written permission of BYRNE CONSULTANTS constitutes an infringement of copyright.

CLIENT

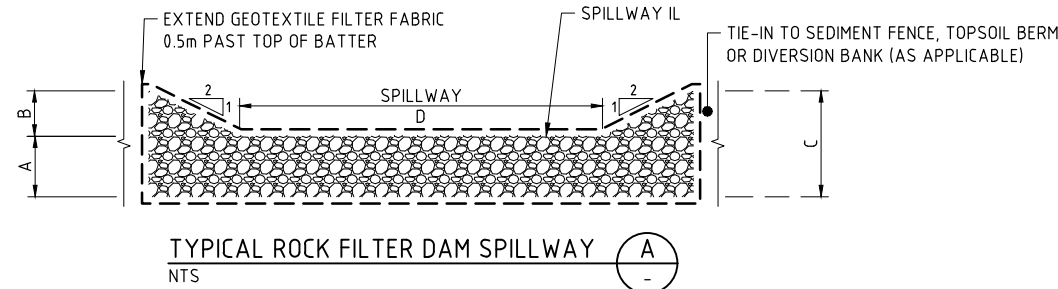
ABN 78 124 388 192  
 P.O Box 43420 Casuarina NT 0811  
 Ph. 08 89472476 Fax: 08 89475098

APPROVED	
PB	
DRAWN	CHECKED
AD	PC
DESIGNED	CHECKED
PC	PB

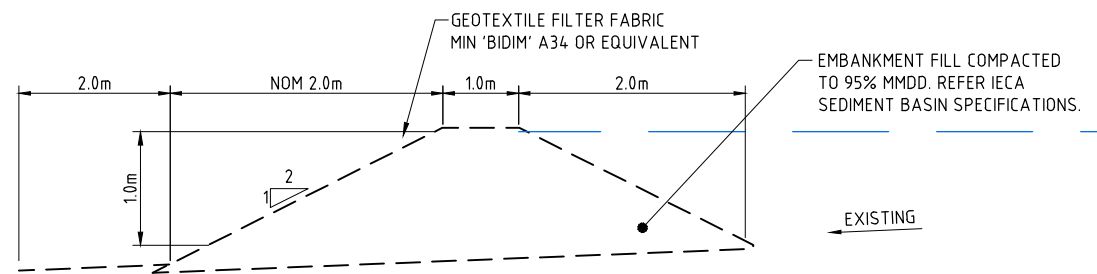
<b>TITLE</b>			
2CRU SUBDIVISION - GULLY REHAB WORKS NT LOT 4873, LEE POINT DRY SEASON EROSION SEDIMENT CONTROL PLAN FINISHED SURFACES PLAN			
SCALE	PROJECT No	DRAWING No	AMDT
AS SHOWN	NT24102	WE05-ESC504	1



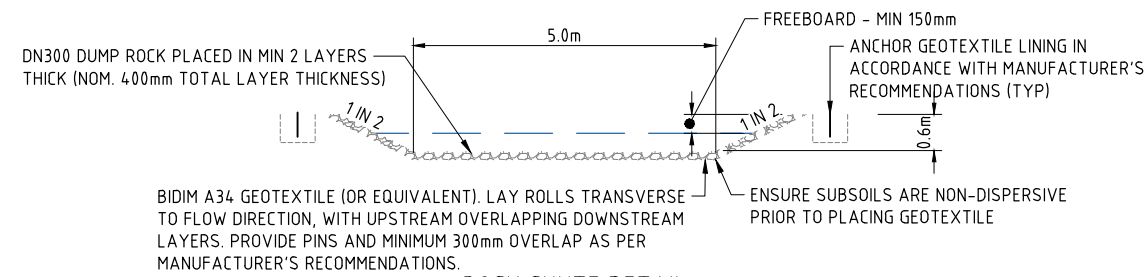
RFD TYPE	A	B	C	D
1	0.6	0.4	1.0	3
2	0.3	0.2	0.5	1



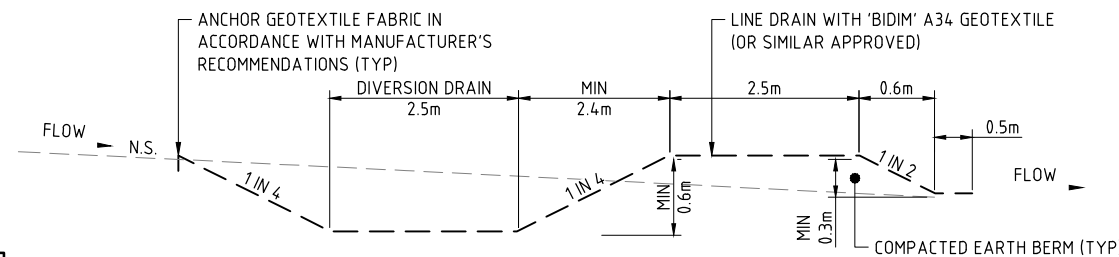
TYPICAL ROCK FILTER DAM SPILLWAY  
NTS



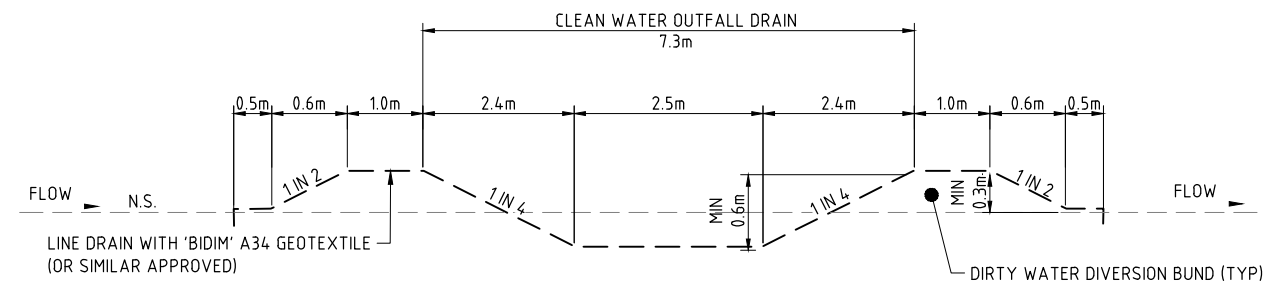
EARTH BUND DETAIL  
NTS



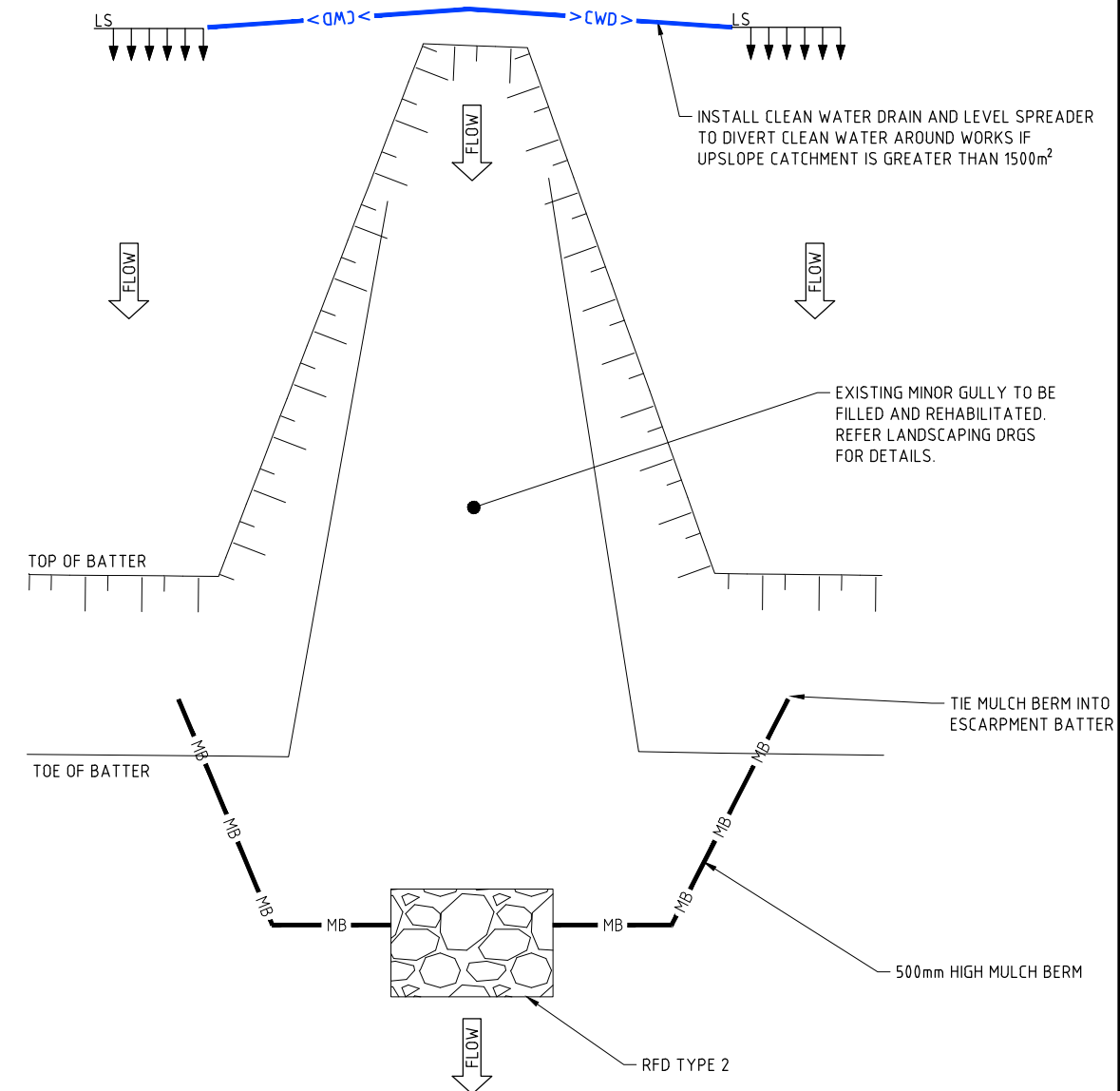
ROCK CHUTE DETAIL  
NOT TO SCALE



TYPE A CLEAN WATER DRAIN DETAIL  
NOT TO SCALE



TYPE B CLEAN WATER DRAIN DETAIL  
NOT TO SCALE



TYPICAL MINOR GULLY CONTROL  
NTS

**WARNING**  
BEWARE OF UNDERGROUND SERVICES  
The locations of underground services are approximate only and their exact position should be proven on site. No guarantee is given that all existing services are shown.

PLOTTED ON: 25/May/2026 10:53 AM  
USER: ALFIO.DILETTOSO  
FILE LOCATION: C:\12\sis\data\BYRNE-TMS\NT24102 - WE05 - 2CRU Stage 2 Outfall and Gully Rehab (NT24082)\_159704\_CADD\4.2 DWG\NT24102-WE05-ESC500.dwg

COPYRIGHT The concepts and information contained in this document are the copyright of BYRNE CONSULTANTS. Use or copying of the document in whole or in part without the written permission of BYRNE CONSULTANTS constitutes an infringement of copyright.		CLIENT 		APPROVED PB DRAWN AD DESIGNED PC		CHECKED PC CHECKED PB		TITLE <b>2CRU SUBDIVISION - GULLY REHAB WORKS</b> NT LOT 4873, LEE POINT DRY SEASON EROSION SEDIMENT CONTROL PLAN TYPICAL SECTION AND DETAILS			
No. DATE INITIAL AMENDMENT		 ABN 78 124 388 192 P.O.Box 43420 Casuarina NT 0811 Ph. 08 89472476 Fax: 08 89475098		SCALE AS SHOWN		PROJECT No <b>NT24102</b>		DRAWING No <b>WE05-ESC505</b>		AMDT <b>0</b>	