

SITE PLAN
NOT TO SCALE

SCHEDULE OF DRAWINGS

DRAWING No.	DRAWINGS (FOR INFORMATION ONLY)
21020-C140	EROSION AND SEDIMENT CONTROL COVER SHEET
21020-C141	EROSION AND SEDIMENT CONTROL NOTES
21020-C142	EROSION AND SEDIMENT CONTROLS LAYOUT PLAN (WET SEASON)
21020-C143	EROSION AND SEDIMENT CONTROLS FINISHES PLAN
DRAWING No.	STANDARD DRAWINGS
	<u>IECA STANDARD DRAWINGS - DRAINAGE CONTROLS</u>
DB-01	FLOW DIVERSION BANKS
RCD-01	CHECK DAMS
	<u>IECA STANDARD DRAWINGS - EROSION CONTROLS</u>
GRAVEL-01	GRAVELLING
R-01	REVEGETATION - GENERAL
	<u>IECA STANDARD DRAWINGS - SEDIMENT CONTROLS</u>
EXIT-01	CONSTRUCTION EXIT - ROCK PAD
EXIT-02	CONSTRUCTION EXIT - ROCK PAD (NOTES)
SF-01	SEDIMENT FENCE
SF-02	SEDIMENT FENCE (NOTES)
RFD-03	ROCK FILTER DAM
RFD-04	ROCK FILTER DAM (NOTES)
ESC-03	KERB INLET SEDIMENT TRAPS

REF. IECA STANDARD DRAWINGS - <https://www.austieca.com.au/publications/book-6-standard-drawings>

DEVELOPMENT PERMIT	TBC	
CONSTRUCTION PERIOD	TBC	
SUPERINTENDENT CONTACT	TBC	04XX XXX XXX
CONTRACTOR CONTACTS		
• SITE MANAGER	TBC	04XX XXX XXX
• PROJECT MANAGER	TBC	04XX XXX XXX
• ENVIRONMENTAL OFFICER	TBC	04XX XXX XXX
• ESCP DESIGNER	TBC	04XX XXX XXX

GENERIC INSTALLATION SEQUENCE

THE FOLLOWING TABLE INDICATES MINIMUM EROSION AND SEDIMENT CONTROL MEASURES FOR THE WORKS. SITE CONDITIONS, SUCH AS THE PRESENCE OF DISPERSIVE SOILS, MAY WARRANT HIGHER EROSION AND SEDIMENT CONTROL STANDARDS. MARK OUT INITIAL LIMITS OF DISTURBANCE AND IDENTIFY LOCATION OF DISPERSIVE SOIL (IF ANY). IF DISPERSIVE SOIL IS ENCOUNTERED, CONTACT THE SUPERINTENDENT AND ESCP DESIGNER PRIOR TO COMMENCING WORKS.

ITEM	INSTALLED	REMOVED
ENTRY/EXIT ROCK PAD	PRIOR OR IN CONJUNCTION WITH SITE CLEARING.	ONCE SITE IS STABILISED AND ALL TEMPORARY FACILITIES HAVE BEEN REMOVED.
CLEAN WATER DIVERSION CHANNELS/BERMS	PRIOR OR IN CONJUNCTION WITH SITE CLEARING.	ONCE SITE IS STABILISED AND ALL TEMPORARY FACILITIES HAVE BEEN REMOVED.
ROCK FILTER DAMS	PRIOR OR IN CONJUNCTION WITH SITE CLEARING	ONCE SITE IS STABILISED AND ALL TEMPORARY FACILITIES HAVE BEEN REMOVED.
SEDIMENT FENCE	PRIOR OR IN CONJUNCTION WITH SITE CLEARING.	ONCE SITE IS STABILISED AND ALL TEMPORARY FACILITIES HAVE BEEN REMOVED.
GRAVELLING OF TEMP FACILITIES	UPON ESTABLISHMENT OF SITE ACCESS/EGRESS TRACK, SITE OFFICES AND CONTRACTOR CARPARK / LAYDOWN AREA.	ONCE WORKS ARE COMPLETE AND TEMPORARY FACILITIES HAVE BEEN DECOMMISSIONED.
ROCK CHECK DAMS	INSTALLED IN DRAINS IMMEDIATELY AFTER DRAIN CONSTRUCTION	REMOVED ONCE DRAINS ARE DECOMMISSIONED
FIELD AND KERB INLET SEDIMENT TRAPS	INSTALLED UPON COMPLETION OF STORMWATER PITS (GIPS, LBPS AND SEPS)	ONCE SITE IS STABILISED AND ALL TEMPORARY FACILITIES HAVE BEEN REMOVED.
REVEGETATION	IMMEDIATELY FOLLOWING COMPLETION OF WORKS	N/A

STAGING OF WORKS

ITEM OF WORKS	TIMING SCHEDULE
1. SITE MOBILISATION AND ESTABLISHMENT	TBC
2. ACCESS / ENTRY AND EXIT CONTROLS	TBC
3. EARTHWORKS	TBC
4. ROADWORKS	TBC
5. STORMWATER AND DRAINAGE	TBC
6. ELECTRICAL	TBC
7. LANDSCAPING AND REHABILITATION	PROGRESSIVE

EROSION RISK ASSESSMENT

CATCHMENT	AREA (ha)	R	K	LS	P	C	A (t/ha/month)	A (t/month)	CONTROL
STUART HIGHWAY SCOPE	0.3	160	0.053	0.34	1.3	1.0	3.7	1.1	TYPE 3
SCHWARTZ CRESCENT CONNECTION	0.7	160	0.053	0.34	1.3	1.0	3.7	2.6	TYPE 3
EXISTING SCHWARTZ CRESCENT + ANZAC HILL ROAD	0.45	160	0.053	0.34	1.3	1.0	3.7	1.7	TYPE 3

WARNING
BWARE OF UNDERGROUND SERVICES
The locations of underground services are approximate only and their exact position should be proven on site
No guarantee is given that all existing services are shown

	ABN 78 124 388 192 P.O.Box 43420 Casuarina NT 0811 Ph. 08 89472476 Fax: 08 89475098		TITLE BAYVIEW SUBDIVISION LOT A & B EROSION & SEDIMENT CONTROL	
	DRAWN BM	SCALE AS SHOWN	PROJECT No 22007	DRAWING No SK005

GENERAL NOTES

- THIS IS A 'WET SEASON' ESCP FOR A SITE IN THE ALICE SPRINGS MUNICIPALITY.
- ALL WORKS MUST BE UNDERTAKEN IN ACCORDANCE WITH THE APPROVED ESCP AND ASSOCIATED DEVELOPMENT CONDITIONS.
- EROSION AND SEDIMENT CONTROL MEASURES MUST CONFORM TO THE STANDARDS AND SPECIFICATIONS CONTAINED IN:
 - THE APPROVED ESCP AND SUPPORTING DOCUMENTATION; AND
 - THE LATEST VERSION OF INTERNATIONAL EROSION CONTROL ASSOCIATION (IECA) GUIDELINES, IF THE STANDARDS AND SPECIFICATIONS ARE NOT CONTAINED IN THE APPROVED ESCP.
- CONTRACTOR IS RESPONSIBLE FOR IMPLEMENTATION, MONITORING AND MANAGEMENT OF ALL EROSION AND SEDIMENT CONTROL MEASURES TO THE SATISFACTION OF DEPWS.
- CONTRACTOR MUST TAKE ALL REASONABLE AND PRACTICABLE MEASURES TO CONTROL STORM WATER FLOW VELOCITIES; MINIMISE SOIL EROSION AND SEDIMENT RUNOFF, AND MITIGATE ENVIRONMENTAL HARM.
- UNEXPECTED CIRCUMSTANCES OR LARGE STORM EVENTS MAY NECESSITATE AMENDMENT OF THE ESCP. IN THE EVENT THAT SITE CONDITIONS CHANGE SIGNIFICANTLY FROM THOSE CONSIDERED WITHIN THE APPROVED ESCP, A REVISED EROSION AND SEDIMENT CONTROL PLAN (ESCP) MUST BE SUBMITTED FOR APPROVAL TO DEPWS AND ADDITIONAL EROSION AND SEDIMENT CONTROL MEASURES MUST BE IMPLEMENTED.
- WHERE THERE IS HIGH PROBABILITY OF ENVIRONMENTAL HARM OCCURRING DUE TO SEDIMENT LEAVING THE SITE, CONTRACTOR MUST IMPLEMENT ALL REASONABLE AND PRACTICABLE MEASURES REQUIRED TO MITIGATE SUCH HARM, INCLUDING IMPLEMENTATION OF APPROPRIATE ADDITIONAL CONTROL MEASURES. WITH THE ESCP AMENDED AS SOON AS POSSIBLE, AND RE-SUBMITTED FOR APPROVAL TO DEPWS.
- CONTRACTOR MUST MAINTAIN SUFFICIENT EROSION AND SEDIMENT CONTROL MATERIALS ON SITE FOR SHORT NOTICE REPAIRS.
- CONTRACTOR MUST MONITOR THE WORKS AREA WEEKLY, OR DAILY DURING RAINFALL, AND ADAPT ESC PRACTICES AS REQUIRED TO MAINTAIN THE REQUIRED PERFORMANCE STANDARD.

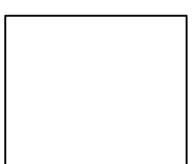
ERA NOTES

- GREATEST RAINFALL AT THE SITE IS TYPICALLY EXPERIENCED IN JANUARY. ANNUAL RAINFALL EROSIIVITY FACTOR (R) WAS CALCULATED VIA THE EMPIRICAL EQUATION AND THE PROPORTION OF RAINFALL EXPERIENCED IN JANUARY AS A RATIO OF THE ANNUAL RAINFALL WAS APPLIED TO DETERMINE A MONTHLY FACTOR.
- K-VALUE WAS IDENTIFIED WITH REFERENCE TO THE GEOTECHNICAL REPORT (DOUGLAS PARTNERS - 201194.00.R.001.REV0) FOR THE SITE. SANDY GRAVEL (GM) AND SILTY SANDS (SM) WERE IDENTIFIED IN TEST PITS.
- LS FACTORS WERE DERIVED BASED ON WORST CASE DESIGN ROAD CROSSFALL (I.E. 3% FALL OVER LESS THAN 20 METRES FOR ALL CROSS-SECTIONS).

DRAWINGS APPROVED BY CERTIFIED PROFESSIONAL IN EROSION AND SEDIMENT CONTROL.

NAME: PAUL BRANDIS
CPESC NO: 00009681

SIGNATURE:



SITE MANAGEMENT

1. CONSTRUCTION ACTIVITIES MUST BE STAGED SO THAT LAND DISTURBANCE IS CONFINED TO AREAS OF MANAGEABLE SIZE AND THE EXTENT AND DURATION OF SOIL EXPOSURE IS LIMITED. EROSION AND SEDIMENT CONTROL MEASURES MUST BE PROGRESSIVELY IMPLEMENTED TO SUIT.
2. ALL OFFICE AND OPERATIONAL ACTIVITIES MUST BE LOCATED SUCH THAT ALL LIQUID EFFLUENT (E.G. WASH-DOWN WATER) IS TOTALLY CONTAINED AND TREATED WITHIN THE SITE.
3. ALL LIQUIDS AND CHEMICALS MUST BE STORED AND HANDLED ON-SITE IN ACCORDANCE WITH RELEVANT STANDARDS, INCLUDING AS1940 - THE STORAGE AND HANDLING OF FLAMMABLE AND COMBUSTIBLE LIQUIDS.
4. SITE SPOILS MUST BE LAWFULLY DISPOSED OF IN A MANNER THAT DOES NOT RESULT IN ONGOING SOIL EROSION OR ENVIRONMENTAL HARM.
5. EXCAVATION WORKS MUST BE STAGED SO THAT THE DURATION OF EXPOSED OPEN TRENCHES IS LIMITED. TRENCHING MUST ONLY BE OPENED UP WHERE IT IS INTENDED TO BE BACKFILLED IN THE SAME WORKING DAY.
6. NO LIQUID EFFLUENT IS PERMITTED TO BE DISPOSED OF ON SITE.
7. ACCESS TRACKS ARE TO BE GRADED TO A CROWN OR WITH CROSSFALL DRAINAGE.
8. ACCESS TRACKS ARE TO INCORPORATE STABILISED EXIT POINTS.
9. ACCESS TRACKS ARE TO BE MONITORED FOR EXCESSIVE SEDIMENT TRACKING INTO ADJACENT PUBLIC ROADS. A REVIEW OF THE CONTROLS WILL BE UNDERTAKEN AND ADDITIONAL MEASURES MAY BE EMPLOYED WHERE SEDIMENT BUILD-UP OCCURS ON PUBLIC ROADS AT VEHICLE EXIT POINTS.

CLEARING AND GRUBBING

1. MINIMISE DISTURBANCE TO ONLY THOSE AREAS REQUIRED FOR CONSTRUCTION. ALL OTHER AREAS WILL BE FLAGGED AS "NO-GO ZONE"
2. ALL CLEARING MUST BE CONDUCTED IN ACCORDANCE WITH FEDERAL, TERRITORY AND LOCAL GOVERNMENT ENVIRONMENTAL POLICIES.
3. BEFORE CLEARING COMMENCES, AREAS OF VEGETATION NOMINATED FOR PROTECTION MUST BE CLEARLY IDENTIFIED AND MARKED ON SITE (BY FLAGGING OR FENCING) AND INSPECTED BY THE SUPERINTENDENT. CLEARING OF VEGETATION MUST BE RESTRICTED TO THE NOMINATED AREAS. CONTRACTOR MUST TAKE ALL REASONABLE AND PRACTICABLE MEASURES TO MITIGATE RISK OF UNNECESSARY LAND CLEARING AND PREVENT REMOVAL OR DISTURBANCE OF ALL VEGETATION AND GROUND COVERS (ORGANIC OR INORGANIC) INTENDED TO BE RETAINED.
4. WHERE CLEARING IS REQUIRED FOR THE PURPOSE OF INSTALLING EROSION AND SEDIMENT CONTROL MEASURES, EXTENTS OF CLEARING MUST BE KEPT TO A MINIMUM.
5. DISTURBANCE OF THE NATURAL ENVIRONMENT MUST BE LIMITED TO THE MINIMUM IN KEEPING WITH THE SITE CLEARING PLANS.
6. CONTRACTOR MUST TAKE ALL PRACTICABLE AND REASONABLE MEASURES DURING CLEARING OPERATIONS TO PREVENT THE FORMATION OF FLOW PATHS THAT CAN CONCENTRATE SURFACE RUNOFF AND CREATE POTENTIAL FOR EROSION.

TOPSOIL AND STOCKPILE MANAGEMENT

1. SITE OF STOCKPILES, INCLUDING EXTENT AND LIMIT OF CLEARING, TO BE AGREED WITH SUPERINTENDENT.
2. STRIPPED TOPSOIL MUST BE STOCKPILED FOR REUSE. TOPSOIL STOCKPILE HEIGHTS MUST BE 1.5m MAX. ALL OTHER STOCKPILE HEIGHTS MUST BE 3.0m MAX WITH 1 IN 4 BATTERS MAX.
3. TOPSOIL STOCKPILE MUST NOT BE COMPACTED OR WHEEL ROLLED.
4. AVOID PLACEMENT OF STOCKPILES (WHERE PRACTICABLE) WITHIN 50m OF ANY DRAINS, DRAINAGE LINE OR OTHER WATERWAYS. SUITABLE TYPE 2/3 EROSION AND SEDIMENTATION CONTROLS TO BE IMPLEMENTED WHERE NOT PRACTICABLE.
5. THE FOLLOWING CONTROLS MUST BE IMPLEMENTED FOR STOCKPILES OF ERODIBLE MATERIAL:
 - A. STOCKPILES MUST BE LOCATED AT LEAST 2m FROM ANY RETAINED VEGETATION AND CONCENTRATED DRAINAGE LINES.
 - B. EARTH DIVERSION BUNDS MUST BE INSTALLED IMMEDIATELY UP-SLOPE OF THE STOCKPILE, WHERE THE CONTRIBUTING CATCHMENT EXCEEDS 1500m² AND MUST BE MANAGED TO AVOID CONCENTRATING FLOW CAUSING EROSION.
 - C. SEDIMENT CONTROL MEASURES MUST BE INSTALLED DOWNSTREAM OF THE STOCKPILE (E.G. MULCH BERMS OR SEDIMENT FENCES).
 - D. TRENCH SPOIL AND BACKFILL MATERIAL MUST GENERALLY BE STOCKPILED A MINIMUM OF 1.0m FROM OPEN TRENCHES.
6. STOCKPILE OF MATERIALS VULNERABLE TO SEDIMENTATION TO BE COVERED IF REQUIRED.
7. LONG-TERM STOCKPILES (10 DAYS OR MORE) MUST BE ADEQUATELY STABILISED (E.G. COVER, VEGETATION, SOIL BINDER, OR OTHER) AS DEEMED APPROPRIATE BY THE SUPERINTENDENT.
8. ALL DISTURBED AREAS OF STOCKPILES MUST BE SUITABLY STABILISED.

SURFACE WATER AND DRAINAGE CONTROL

1. ALL DRAINAGE CONTROL MEASURES MUST BE APPLIED AND MAINTAINED IN ACCORDANCE WITH APPROVED ESCP DRAWINGS.
2. DURING THE CONSTRUCTION PHASE, ALL REASONABLE AND PRACTICABLE MEASURES MUST BE IMPLEMENTED TO:
 - A. DIVERT CLEAN SURFACE WATERS AWAY FROM THE SITE IN A MANNER THAT MINIMISES EROSION OR CONTAMINATION OF WATER.
 - B. CONTROL FLOW VELOCITIES AND PREVENT SOIL EROSION ALONG DRAINAGE PATHS, INCLUDING ENTRY/EXIT POINTS; AND ENSURE ALL WATERS ARE DISCHARGED ONTO STABLE LAND, IN A NON-EROSIVE MANNER, AND AT A LEGAL POINT OF DISCHARGE.
 - C. MANAGEMENT OF DRAINAGE IS TO AVOID CONCENTRATION OF FLOW.
 - D. OPEN PROFILE TRAPEZOIDAL DRAINS INSTEAD OF "V" DRAINS ARE TO BE USED.
3. CONTROL WATER MOVEMENT THROUGH THE WORKS AREA; FLOW DIVERSION BANKS AND CATCH DRAINS ARE TO BE INSTALLED AS PER DRAWINGS.

EROSION CONTROL AND SURFACE STABILISATION

1. ALL EROSION CONTROL MEASURES MUST BE APPLIED AND MAINTAINED IN ACCORDANCE WITH APPROVED ESCP DRAWINGS.
2. SYNTHETIC EROSION CONTROL TREATMENTS MUST NOT BE USED IF SUCH MATERIALS ARE LIKELY TO CAUSE ENVIRONMENTAL HARM.

DUST CONTROL

1. ALL DUST CONTROL MEASURES MUST BE APPLIED AND MAINTAINED IN ACCORDANCE WITH APPROVED ESCP DRAWINGS.
2. CONTRACTOR MUST BE RESPONSIBLE FOR THE EFFECTIVE CONTROL OF ALL DUST AND WINDBORNE MATERIAL EMANATING FROM THE SITE THROUGHOUT THE PERIOD OF THE CONTRACT.
3. CONTRACTOR MUST IMPLEMENT ALL MEASURES NECESSARY TO MINIMISE WIND EROSION AND PREVENT MATERIAL FROM THE SITE BEING BLOWN OVER OR ONTO PROPERTY OUTSIDE OF THE SITE. MEASURES MUST INCLUDE BUT NOT BE LIMITED TO:
 - A. MINIMISING TRAFFIC MOVEMENTS ON DISTURBED SURFACES AND LIMITING VEHICLE SPEEDS TO 25KPH;
 - B. MAINTAINING EXPOSED SURFACES IN A MOIST CONDITION THROUGH FREQUENT WATERING;
 - C. PROGRAMMING WORKS TO MINIMISE THE LIFE OF SOIL STOCKPILES, OR TEMPORARILY STABILISING LONG TERM STOCKPILES.
4. DURING DRY PERIODS, UTILISE WATER TRUCK TO WATER DOWN WORKS SURFACES TO MINIMISE DUST GENERATION. DUST SUPPRESSION IS TO BE IMPLEMENTED BY SITE SUPERVISOR AS REQUIRED BY VISUAL INSPECTION.

DEWATERING

1. CONTRACTOR MUST MITIGATE SEDIMENT RELATED ENVIRONMENTAL HARM AND/OR IMPACT TO STORMWATER INFRASTRUCTURE RESULTING FROM DEWATERING ACTIVITIES.
2. FLOW DIVERSION BARRIERS, OR OTHER APPROPRIATE SYSTEMS, MUST BE USED TO MINIMISE THE QUANTITY OF WATER ENTERING EXCAVATIONS.
3. DEWATERING CONTROL MAY INCLUDE GEOFABRIC FILTERS AND NON-WOVEN FILTERING FENCING.
4. SEDIMENT LADEN WATER MUST NOT BE DISCHARGED OFF-SITE WITHOUT FIRST BEING TREATED SATISFACTORILY TO REQUIREMENTS OF THE SUPERINTENDENT. DISCHARGED WATER MUST MEET THE FOLLOWING REQUIREMENTS: MAX 75 NTU, pH 6.5 TO 8.0.

REVEGETATION AND REHABILITATION

1. ALL DISTURBED AREAS AND EARTHWORKS MUST BE PROGRESSIVELY REHABILITATED WITH GRASS, OR OTHER COVER.

SEDIMENT CONTROL

1. ALL SEDIMENT CONTROL MEASURES MUST BE APPLIED AND MAINTAINED IN ACCORDANCE WITH APPROVED ESCP DRAWINGS.
2. ALL REASONABLE AND PRACTICABLE MEASURES MUST BE TAKEN TO PREVENT, OR AT LEAST MINIMISE, THE RELEASE OF SEDIMENT FROM THE SITE. SEDIMENT CONTROL DEVICES MUST BE INSTALLED TO TRAP SEDIMENT AS CLOSE TO THE SOURCE AS PRACTICABLE.
3. SEDIMENT CONTROL DEVICES MUST NOT PRESENT A SAFETY HAZARD FOR SITE WORKERS AND/OR THE PUBLIC.
4. SEDIMENT FENCES AND/OR MULCH FILTER BERMS ARE TO BE INSTALLED ALONG THE DOWN SLOPE SIDE OF THE EARTHWORK ACTIVITIES AS PER IECA STANDARD DRAWINGS SF-01, SF-02 AND MB-01. ENSURE RETURNS ARE PROVIDED WHERE APPLICABLE.
5. SEDIMENT CONTROLS ARE TO REMAIN IN PLACE UNTIL THE ACTIVITIES ARE FINISHED AND AREAS ARE STABILISED.
6. TRACKING OF SEDIMENTS ONTO ROADS EXTERNAL OF THE SITE IS NOT PERMITTED. ENTRY/EXIT TO SITE MUST BE RESTRICTED TO DEFINED POINTS, WITH SUPPLEMENTARY ENTRY/EXIT SEDIMENT CONTROLS INSTALLED.
7. SEDIMENT CONTROL DEVICES MUST BE DE-SILTED WHEN CAPACITY IS REDUCED BELOW 80%.
8. SEDIMENT CONTROLS MUST BE INSPECTED WEEKLY DURING CONSTRUCTION AND IMMEDIATELY AFTER EACH RAINFALL EVENT.

MONITORING


1. EROSION AND SEDIMENT CONTROLS ARE DESIGNED IN ACCORDANCE WITH IECA BEST PRACTICE GUIDELINES, USING AN EROSION RISK ASSESSMENT TO CONFIRM THE TYPE OF CONTROLS REQUIRED AROUND EACH SUB-CATCHMENT OF THE SITE.
2. WHERE TYPE 2/3 CONTROLS ARE APPLIED IN THE FORM OF MULCH BERMS, EROSION RISKS IN THESE SUB-CATCHMENTS ARE CONSIDERED TOLERABLE AND RELEASE OF SOME TURBID WATER OFFSITE THROUGH THESE BERMS IS TO BE EXPECTED.
3. WHERE EROSION AND SEDIMENT CONTROLS FAIL, RESULTING IN DISCHARGE OF SEDIMENT OFFSITE, THE CONTRACTOR MUST NOTIFY THE RELEVANT REGULATORY AUTHORITIES TO THE EXTENT REQUIRED UNDER RELEVANT ENVIRONMENTAL LEGISLATION.

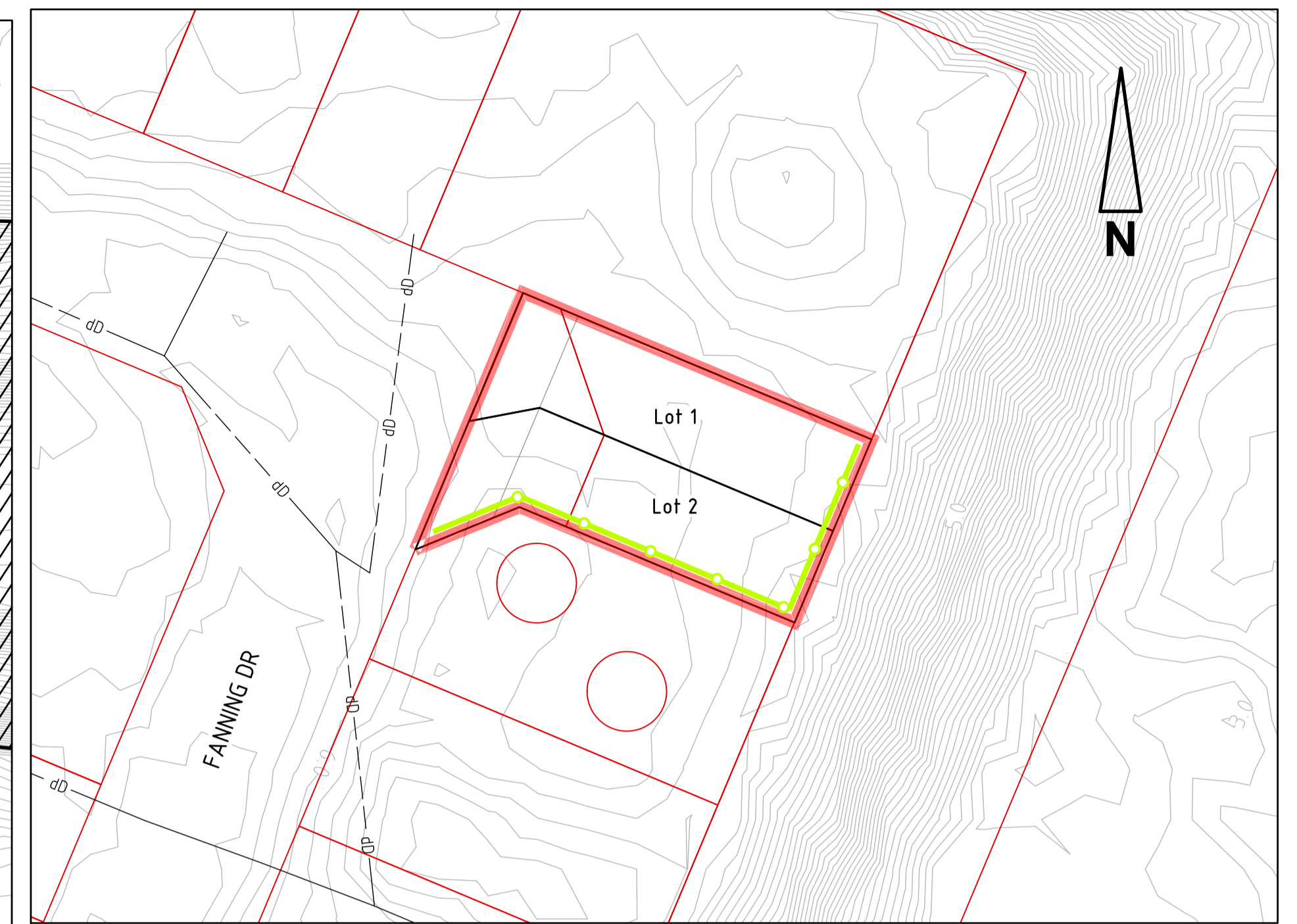
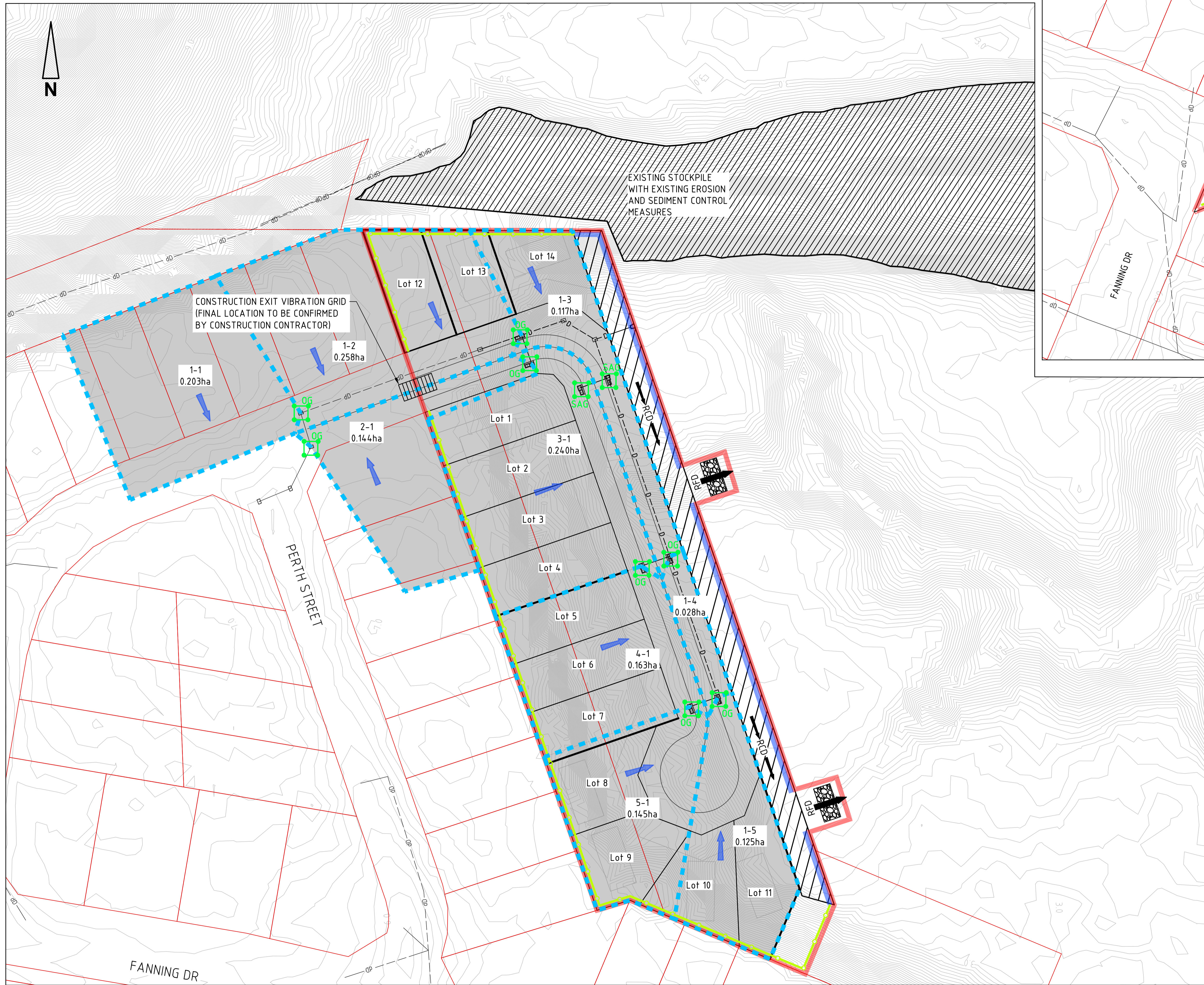
MAINTENANCE

1. ALL EROSION AND SEDIMENT CONTROL MEASURES, INCLUDING DRAINAGE CONTROL MEASURES, MUST BE MAINTAINED IN PROPER WORKING ORDER AT ALL TIMES DURING THEIR OPERATIONAL LIVES.
2. ALL EROSION AND SEDIMENT CONTROL MEASURES MUST BE INSPECTED:
 - A. AT LEAST DAILY (WHEN WORK IS OCCURRING ON-SITE);
 - B. AT LEAST WEEKLY (WHEN WORK IS NOT OCCURRING ON-SITE);
 - C. WITHIN 24 HOURS PRIOR TO EXPECTED RAINFALL; AND
 - D. WITHIN 18 HOURS FOLLOWING A RAINFALL EVENT OF SUFFICIENT INTENSITY AND DURATION TO CAUSE RUNOFF ON-SITE.
3. CONTRACTOR MUST REPAIR ANY DAMAGED EROSION AND SEDIMENT CONTROL MEASURES, AND MAKE GOOD TO THE SATISFACTION OF THE SUPERINTENDENT.
4. CONTRACTOR MUST ENSURE SEDIMENT CONTROL DEVICES ARE DE-SILTED AND MADE FULLY OPERATIONAL AS SOON AS PRACTICABLE AFTER SEDIMENT-PRODUCING EVENTS, TO ENSURE THE SEDIMENT RETENTION CAPACITY IS MAINTAINED ABOVE 80% OF ITS DESIGN RETENTION CAPACITY.
5. ALL MATERIALS, WHETHER LIQUID OR SOLID, REMOVED FROM SEDIMENT CONTROL DEVICES AND PLACES OF SEDIMENT DEPOSITION, MUST BE DISPOSED OF IN AN APPROVED MANNER THAT DOES NOT CAUSE FURTHER SOIL EROSION OR ENVIRONMENTAL HARM. MATERIALS MUST BE DISPOSED OF IN A LOCATION THAT PREVENTS MATERIALS RE-ENTERING THE SYSTEM.
6. ALL SEDIMENT DEPOSITED OFFSITE AS A DIRECT RESULT OF CONSTRUCTION ACTIVITIES MUST BE REMOVED AND THE AREA APPROPRIATELY CLEANED / REHABILITATED AS SOON AS PRACTICABLE.
7. EROSION AND SEDIMENT CONTROL MEASURES MUST BE MAINTAINED UNTIL AFTER THE STOCKPILE IS REMOVED FROM THE SITE.
8. ALL TEMPORARY CONTROL MEASURES MUST BE REMOVED AFTER ACHIEVING A SATISFACTORY "OFF-MAINTENANCE INSPECTION" BY SUPERINTENDENT'S REPRESENTATIVE.

WARNING **BEWARE OF UNDERGROUND SERVICES**

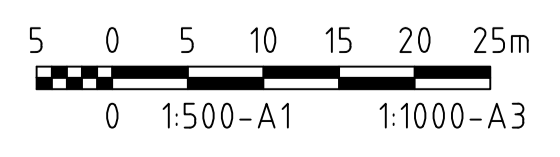
The locations of underground services are approximate only and their exact position should be proven on site
No guarantee is given that all existing services are shown

	ABN 78 124 388 192 P.O.Box 43420 Casuarina NT 0811 Ph. 08 89472476 Fax: 08 89475098		TITLE BAYVIEW SUBDIVISION LOT C EROSION & SEDIMENT CONTROL			
	DRAWN BM	SCALE AS SHOWN	PROJECT No 22007	DRAWING No SK006	AMDT A	
DESIGNED ET						



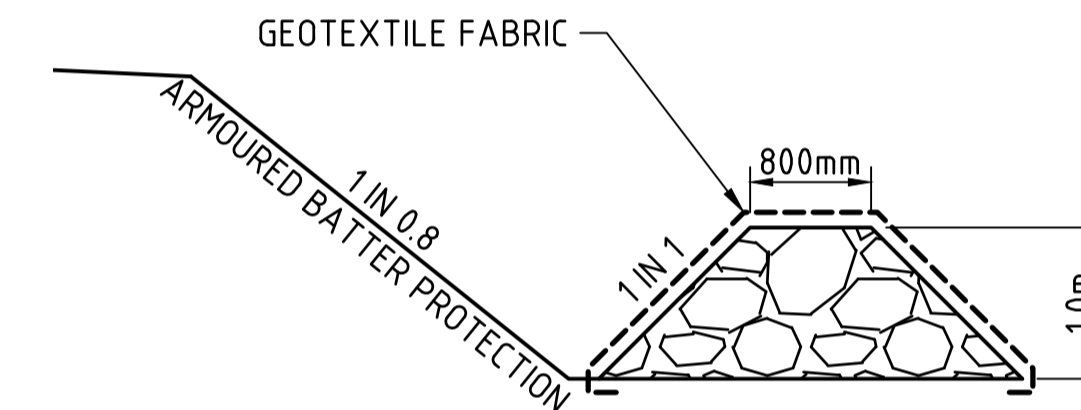
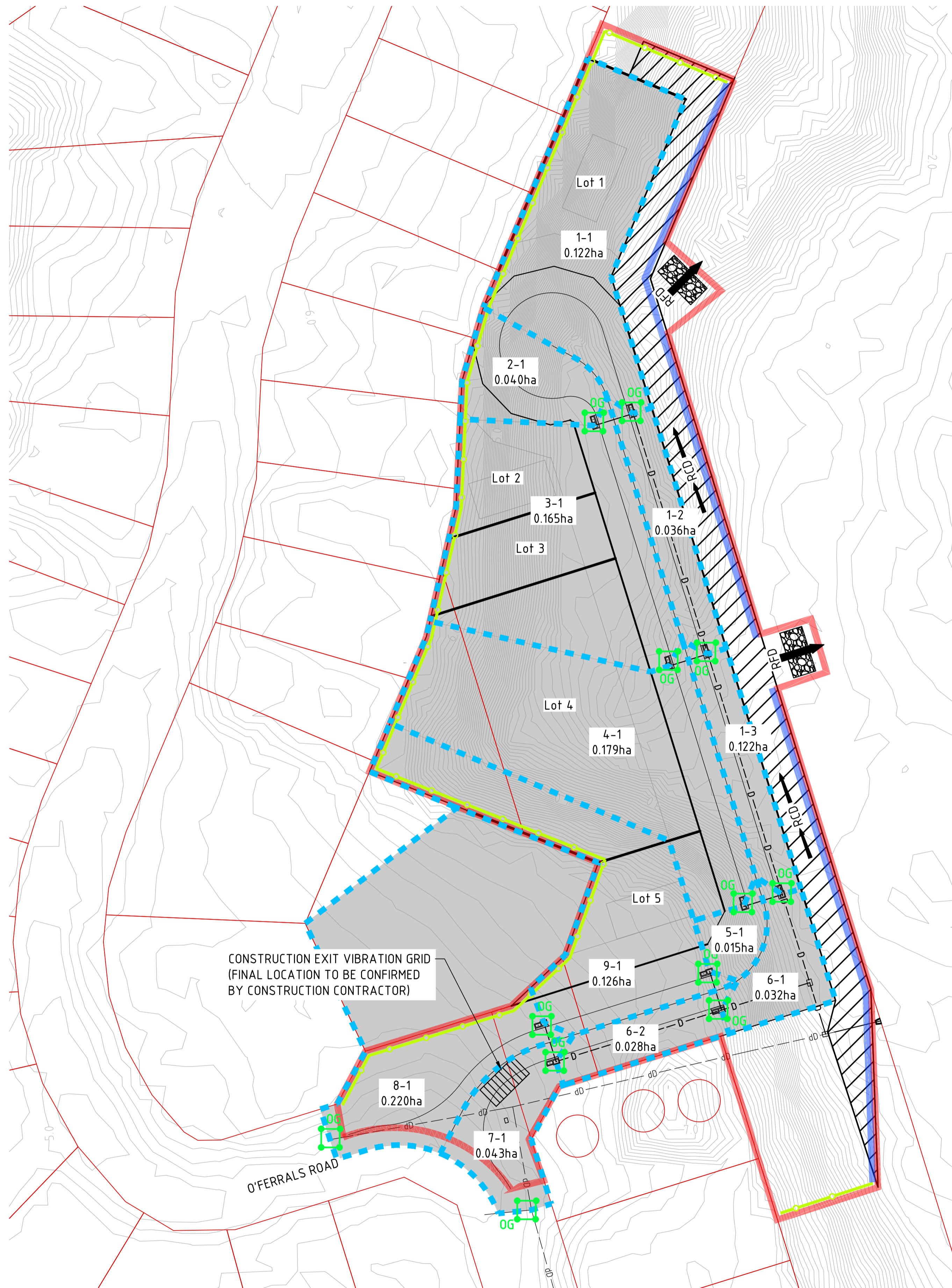
LEGEND

EXISTING	4.15	NATURAL SURFACE CONTOURS
PROPOSED	RFD	ROCK FILTER DAM
	→	STORMWATER FLOW DIRECTION
	→ RCD →	ROCK CHECK DAM 300mm HIGH. REFER IECA STD DRG RCD-01.
	OG	SEDIMENT TRAP. REFER IECA STD DRG. ESC-03.
	—	STORMWATER DIVERSION BUND. 1m HIGH. REFER SK008 FOR BUND DETAILS.
	—	LIMIT OF CLEARING
	—○—	SEDIMENT FENCE. REFER IECA STD DRG SF-01.



byrne CONSULTANTS
 ABN 78 124 388 192
 P.O.Box 43420 Casuarina NT 0811
 Ph. 08 89472476 Fax: 08 89475098

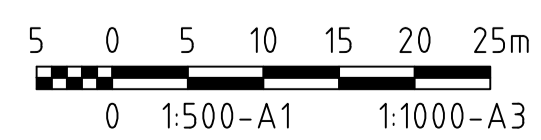
DRAWN		BM		TITLE		BAYVIEW SUBDIVISION	
DESIGNED		ET		SCALE		AS SHOWN	
PROJECT No		22007		DRAWING No		SK007	
AMDT		A		LOT A & B		EROSION & SEDIMENT CONTROL	



BUND DETAIL
SCALE 1:50

LEGEND

- EXISTING**
- 415 NATURAL SURFACE CONTOURS
- PROPOSED**
- RFD ROCK FILTER DAM
 - STORMWATER FLOW DIRECTION
 - RCD ROCK CHECK DAM 300mm HIGH. REFER IECA STD DRG RCD-01.
 - OG SEDIMENT TRAP. REFER IECA STD DRG. ESC-03.
 - STORMWATER DIVERSION BUND. 1m HIGH. REFER BUND DETAILS.
 - LIMIT OF CLEARING
 - SEDIMENT FENCE. REFER IECA STD DRG SF-01.



byrne CONSULTANTS
 ABN 78 124 388 192
 P.O.Box 43420 Casuarina NT 0811
 Ph. 08 894.724.76 Fax: 08 894.75098

DRAWN		TITLE			
BM		BAYVIEW SUBDIVISION			
DESIGNED		LOT C			
ET		EROSION & SEDIMENT CONTROL			
SCALE	PROJECT No	DRAWING No	AMDT		
AS SHOWN	22007	SK008	A		