

A sunset over the ocean with a large, dark cloud formation in the center. The sky transitions from a deep blue at the top to a bright orange and yellow near the horizon. The sun is partially obscured by the cloud, creating a dramatic silhouette effect. The water in the foreground is dark and reflects the colors of the sky.

LITTLE MINDIL DARWIN

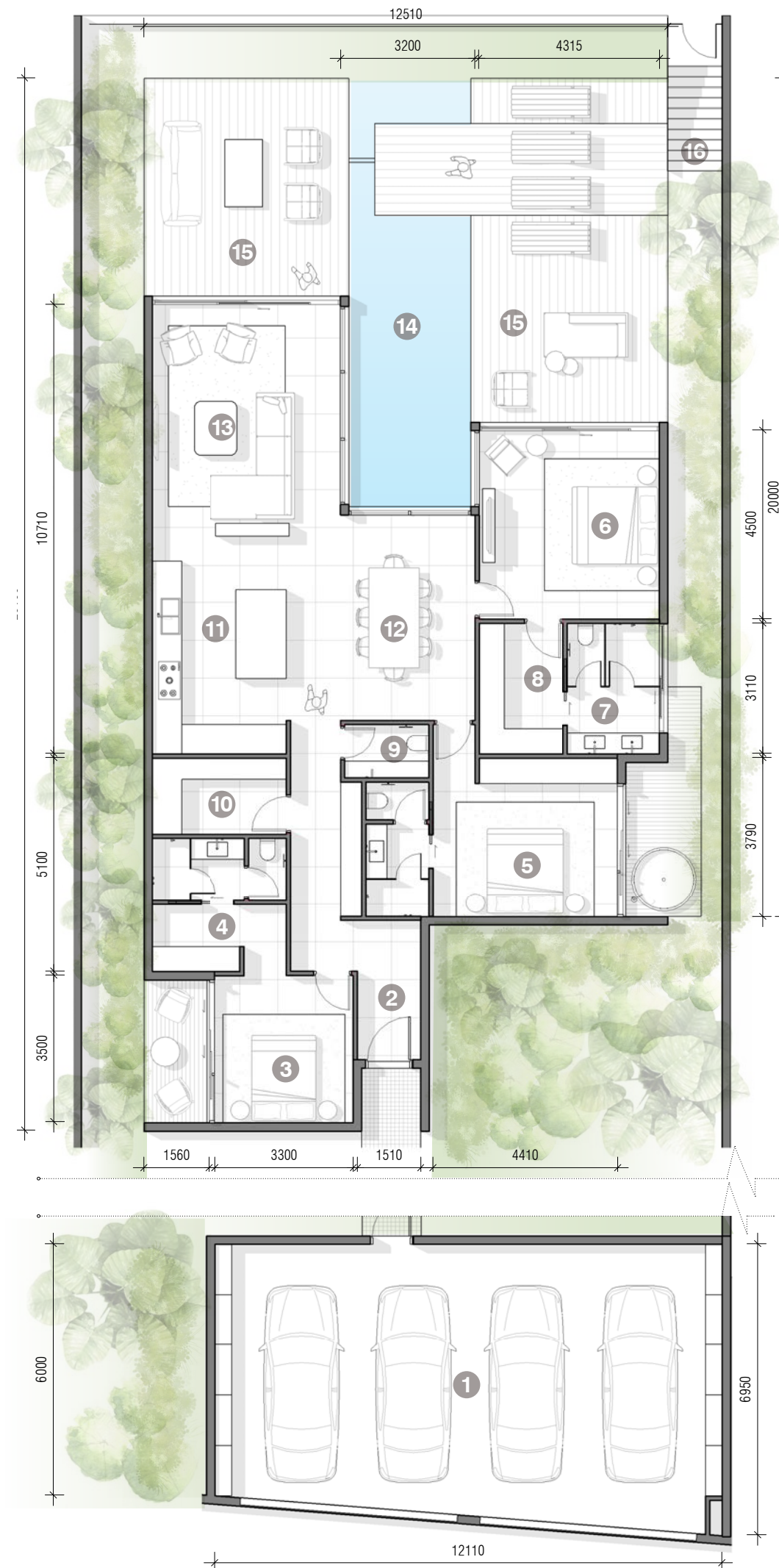
DESIGN RESPONSE PACKAGE
2021



Foreshore Villas

250m² + land

Bedrooms	3
Bathrooms	3
Living	1
Dining	1
Kitchen	1
Study	1
Pool	1
Secluded garden	1
Car Parking	4



- 1 Private Car Garage & Store
- 2 Entry Vestibule
- 3 Bedroom 01 with Secluded Garden
- 4 Walk-in Wardrobe and Ensuite
- 5 Bedroom 02 with Secluded Garden with Jacuzzi
- 6 Master Bedroom with Secluded Decking and Garden
- 7 Ensuite with Bathing room and feature bathtub in garden
- 8 Walk-in Wardrobe
- 9 Powder Room
- 10 Pantry / Laundry
- 11 Open Kitchen with Island bench
- 12 Dining Area
- 13 Lounge Area
- 14 Feature Pool
- 15 Secluded Garden Terrace Lounge
- 16 Access to foreshore

TITLE BOUNDARY

LANDSCAPED ROOF
- REFER TO LANDSCAPE PLAN FOR DESIGN AND DETAILS

PROTECTED PRIVATE YARD FOR VILLAS.
- NOT VISIBLE BY APARTMENT AND HOTEL BUILDINGS OR ACCESSIBLE BY PUBLIC.

PRIVATE VILLA POOLS FACING BEACH WITH UNINTERRUPTED VIEWS

STAIR IN DISTANCE PROVING BEACH ACCESS FROM PRIVATE VILLA
- MESH ACCESS DOOR AT CRIB WALL LOCATION

1800 HIGH WALL / PRIVACY SCREEN

INTEGRATED WIRE BALUSTRADE WITHIN LANDSCAPING

LOW PLANTING
- REFER TO LANDSCAPE PLAN FOR DESIGN AND DETAILS

LANDSCAPED CRIB WALL
- REFER TO LANDSCAPE PLAN FOR DESIGN AND DETAILS

EXISTING COUNCIL LAND TO BEAUTIFIED WITH LANDSCAPING
- REFER TO LANDSCAPE PLAN FOR DESIGN AND DETAILS

PROTECTED VIEWLINE TO VILLAS

EXISTING NATURAL GROUND

AHD 5470

1700

PRIMARY STORM SURGE SHOWN DASHED

MINDIL BEACH

DINING.

LARGE PRIVATE VILLAS NOT VISIBLE BY HOTEL

PDR

POOL

DEEP SOIL PLANTING

MESH ACCESS DOOR IN DISTANCE SHOWN DASHED.

EXISTING COUNCIL LAND TO BEAUTIFIED WITH LANDSCAPING
- REFER TO LANDSCAPE PLAN FOR DESIGN AND DETAILS

LITTLE MINDIL BEACH FOOTPATH REPAIR & REVETMENT WALL WORKS BY NTG (NORTHERN TERRITORY GOVERNMENT) UNDER CONSTRUCTION



foreshore interface

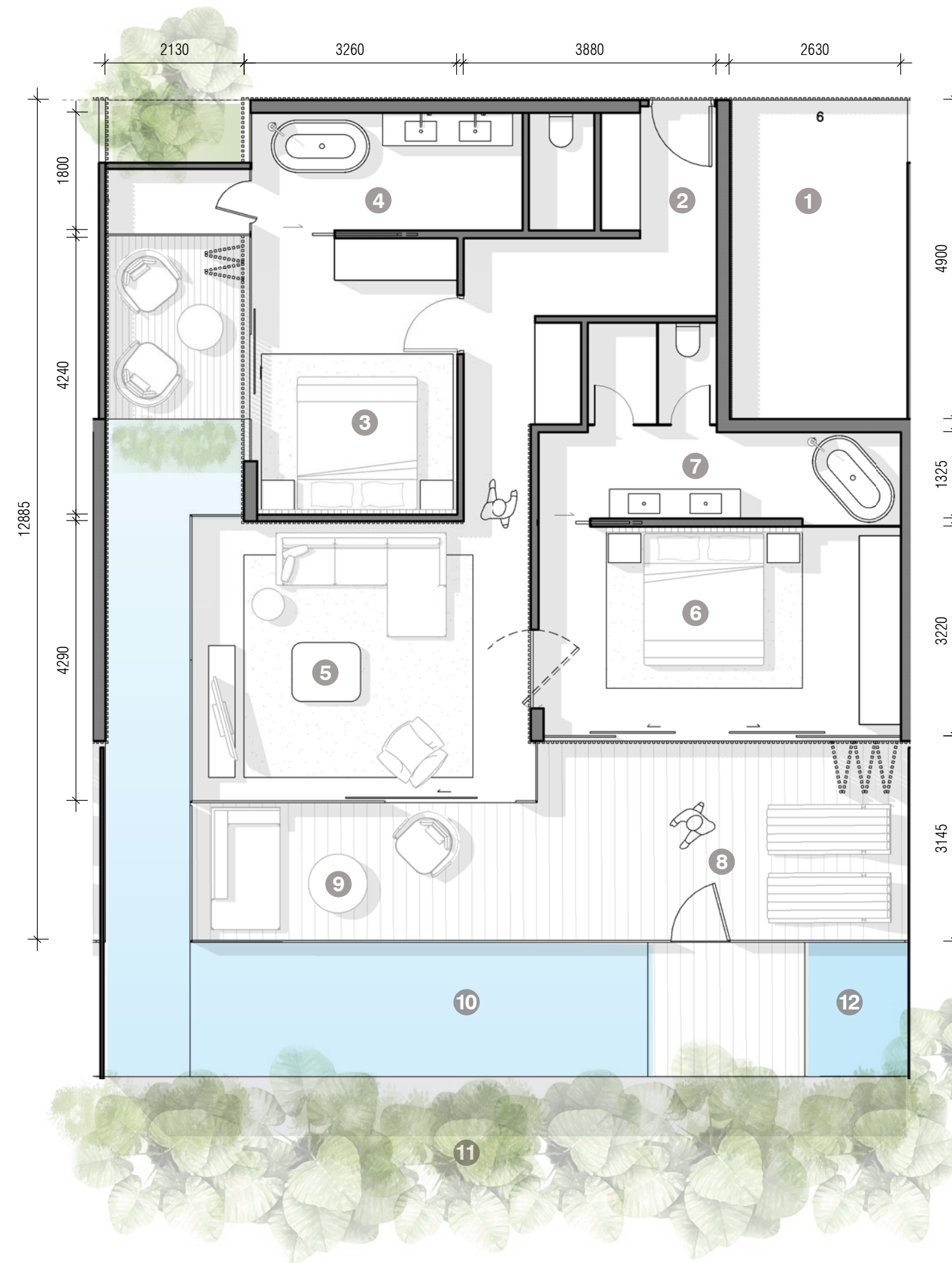




Lagoon Villas

86m² + garden

Bedrooms	2
Bathrooms	2
Living	1
Pool	1
Secluded garden	1
Car Parking	1



- 1 Buggy Car Park
- 2 Entry Vestibule
- 3 Bedroom 01 with Secluded Terrace
- 4 Ensuite with Bathing Room
- 5 Lounge with mini bar and television
- 6 Bedroom 02 with built-in lounge and wardrobe
- 7 Ensuite with Bathing Room
- 8 Bridge Decking with Lounge
- 9 Lounge deck into the Sancturay Garden
- 10 Pool
- 11 Lagoon
- 12 Jacuzzi







Loft Apartment

lower level - 180m² + b

Bedrooms	3
Bathrooms	3
Living	1
Dining	1
Kitchen	1
Study	1
Secluded Terrace	3
Car Parking	2



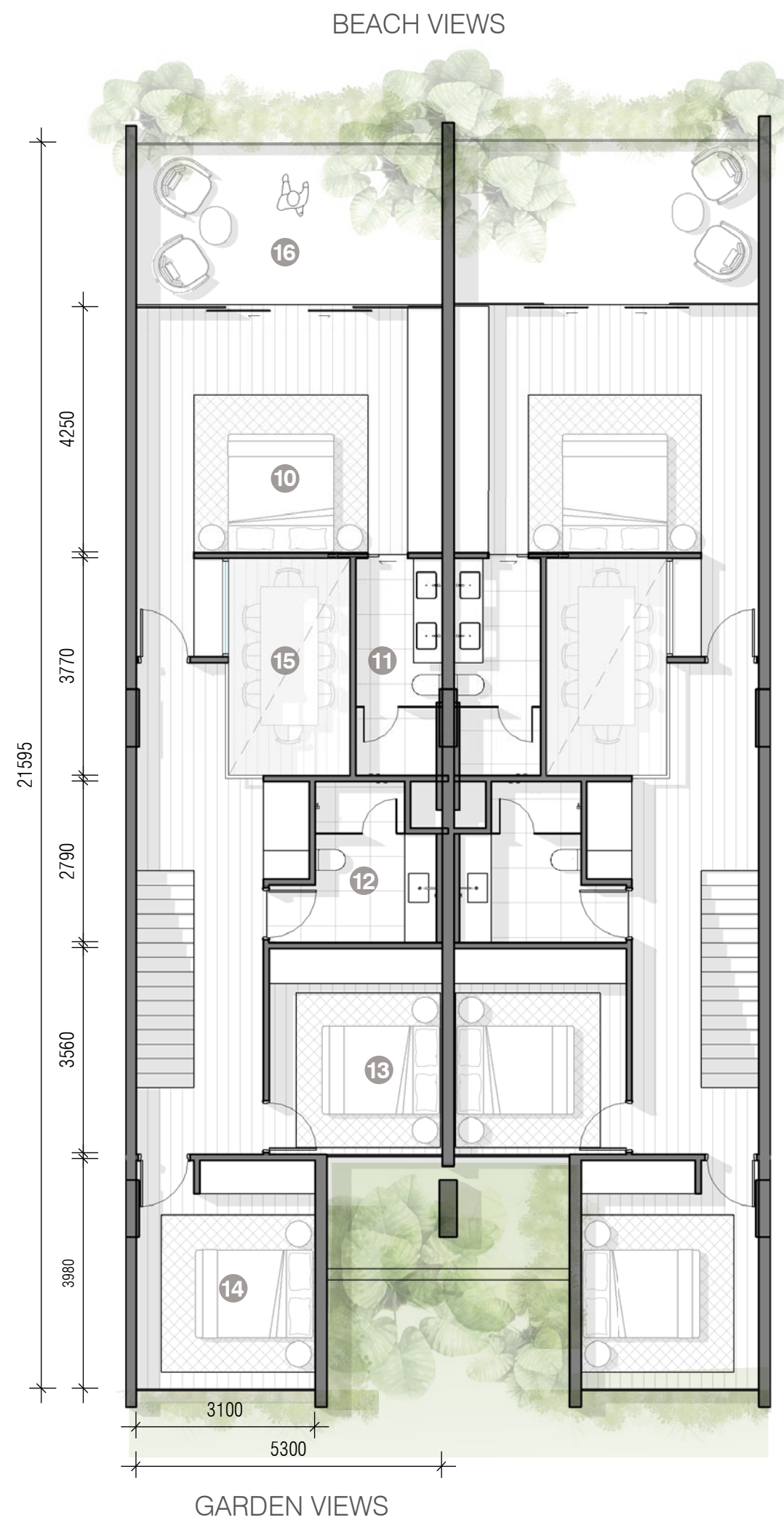
- 1 Entry Vestibule
- 2 Study
- 3 Open Kitchen with Island Bench
- 4 Laundry / Butlers Pantry
- 5 Dining Area
- 6 Lounge Area
- 7 Exterior Lounge Area
- 8 Powder Room
- 9 Stairs



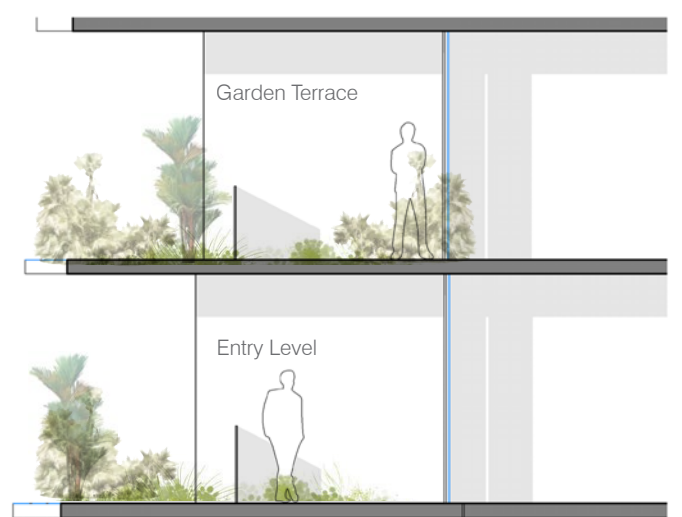
Loft Apartment

upper level - 180m² + b

Bedrooms	3
Bathrooms	3
Living	1
Dining	1
Kitchen	1
Study	1
Secluded Terrace	3
Car Parking	2



- 10 Master Bedroom with External Garden
- 11 Master Ensuite
- 12 Bathroom
- 13 Bedroom 02
- 14 Bedroom 03
- 15 Void
- 16 Exterior Garden Lounge Area



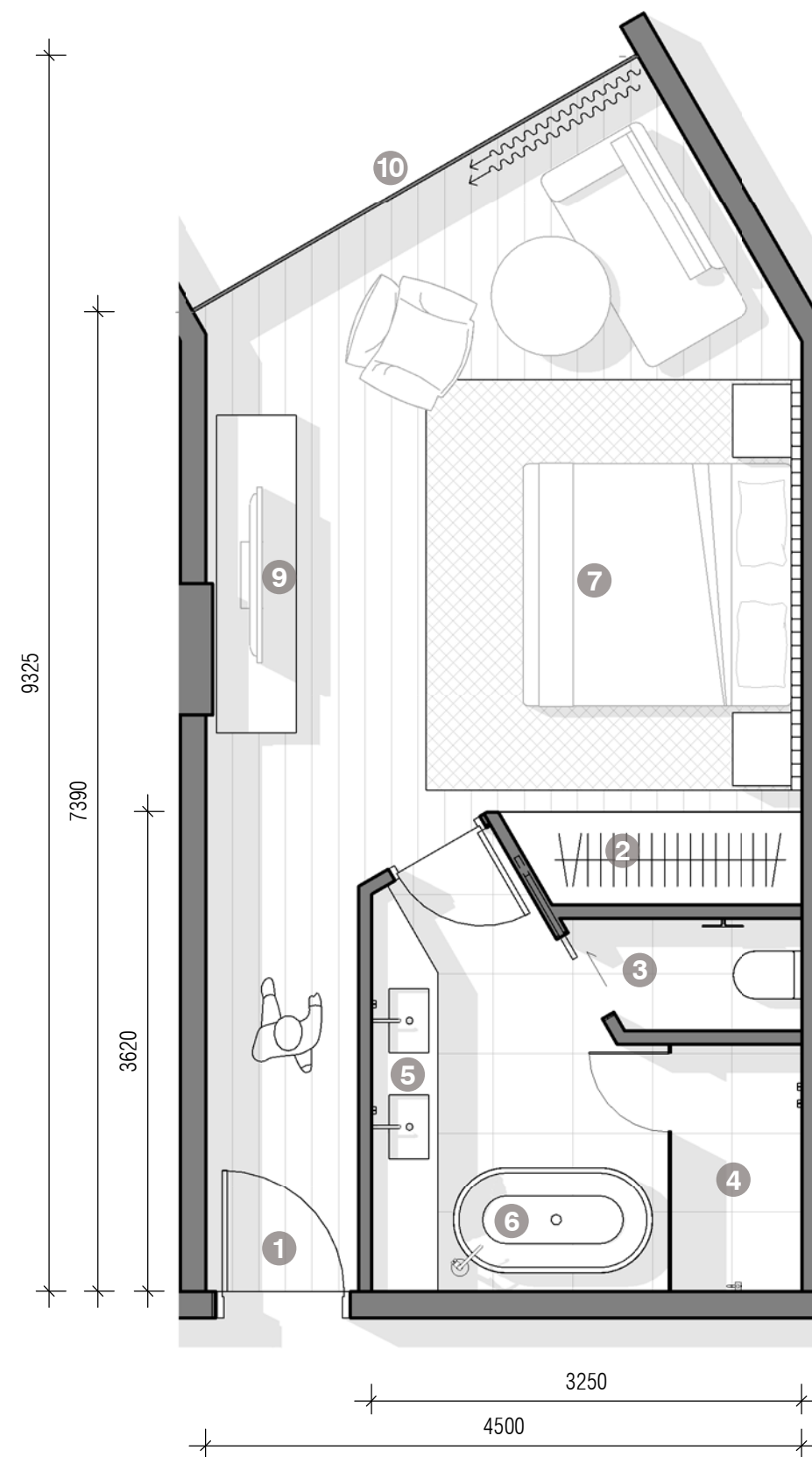
ENTRY - GARDEN VIEWS



Hotel room

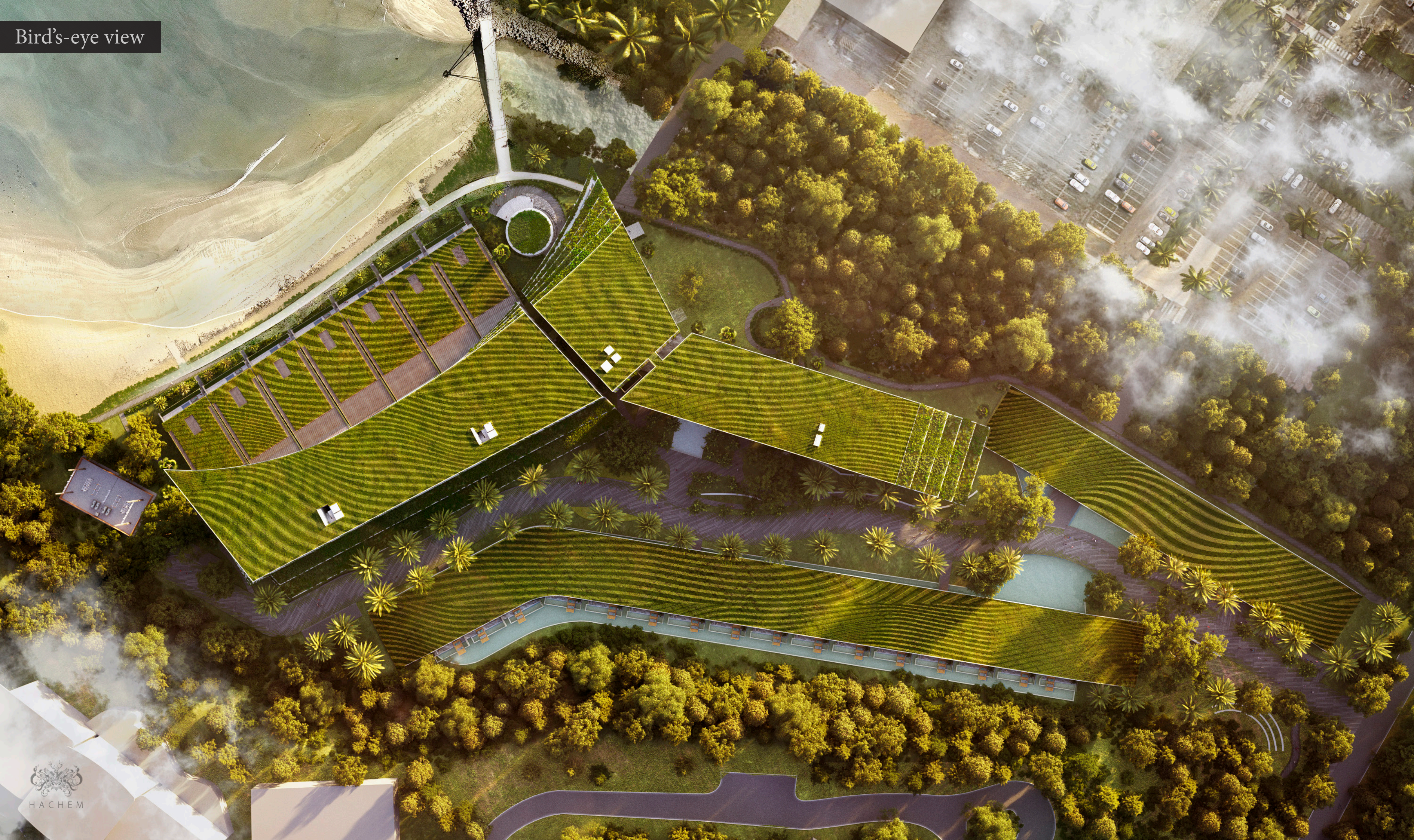
36m² + balcony

Bedrooms	1
Bathrooms - 5 points	1
Living	1
Wardrobe	1



- 1 Entry
- 2 Wardrobe
- 3 Toilet Cubicle
- 4 Shower Cubicle
- 5 Double Vanity
- 6 Freestanding Bathtub
- 7 Sleeping area King Bed
- 8 Chaise and Lounge Desk/Dining
- 9 Television with Mini Bar
- 10 Operable Facade

Bird's-eye view







Summary

- Premium quality development that will draw in local and international visitors.
- Project scale secures financial viability of development and provides employment for locals
- Pathways and activated spaces connect the project with the community.
- Ambience embraces local vernacular and ac Darwin and acknowledges cultural influences on Darwin.
- Architecture makes best use of outstanding water and landscape vistas.

THANK YOU

HACHEM ARCHITECTURE MARKETING INTERIORS