

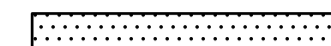


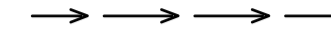


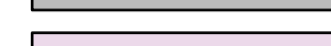


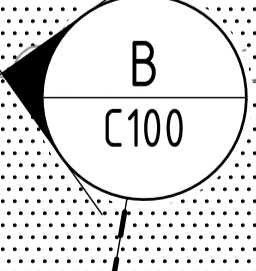
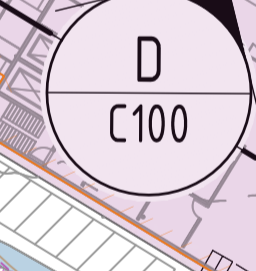
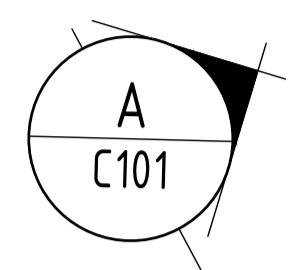
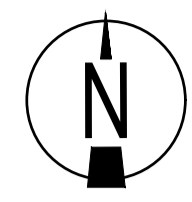


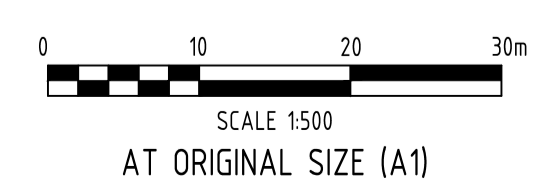
**LEGEND**

-  -12.0 EXISTING SURFACE CONTOURS
-  -12.0 PROPOSED FINISHED SURFACE CONTOURS
-  EXISTING ROAD
-  SITE BOUNDARY
-  PROPOSED STORMWATER DRAINAGE (INDICATIVE LOCATION ONLY)
-  PROPOSED SWALE DISCHARGE
-  PROPOSED FOOTPATH
-  PROPOSED ROAD PAVEMENT
-  PROPOSED ROOFED AREA
-  PROPOSED LAGOON AREA
-  PROPOSED STORMWATER PIT



**ISSUED FOR INFORMATION ONLY**

| Rev | Date     | Description            | By | Chk |
|-----|----------|------------------------|----|-----|
| B   | 17.06.21 | ISSUED FOR INFORMATION | AM | HD  |
| A   | 28.05.21 | ISSUED FOR INFORMATION | HD | HD  |

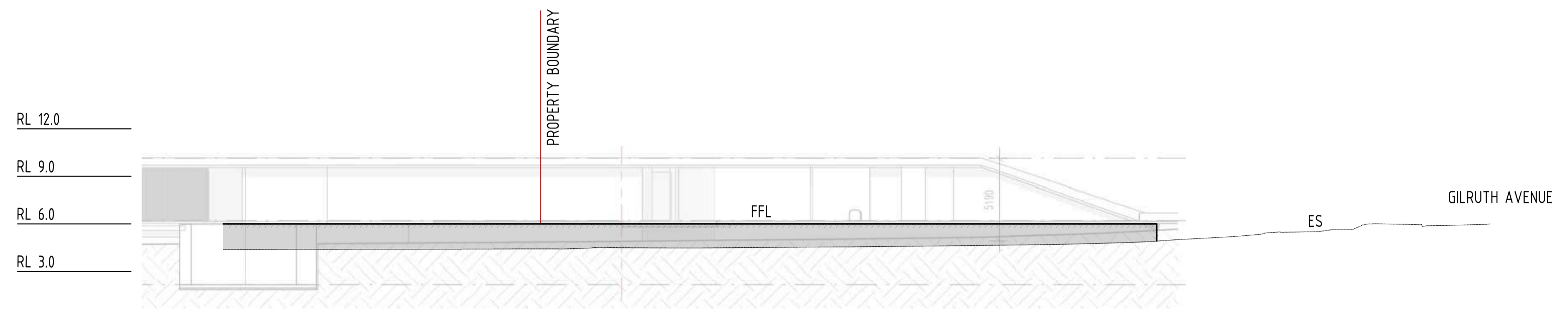


**ADG**  
 Darwin Office  
 Suite G01, Manunda Place, 38 Cavenagh Street,  
 Darwin, Northern Territory 0800, Australia  
 GPO Box 2422, Darwin, Northern Territory 0801  
 T 1300 657 402 F +617 3871 2266  
 E info@adg.com W www.adg.com  
 BRISBANE / DARWIN / GOLD COAST / MELBOURNE / PERTH /  
 SUNSHINE COAST / SYDNEY / TOOWOOMBA

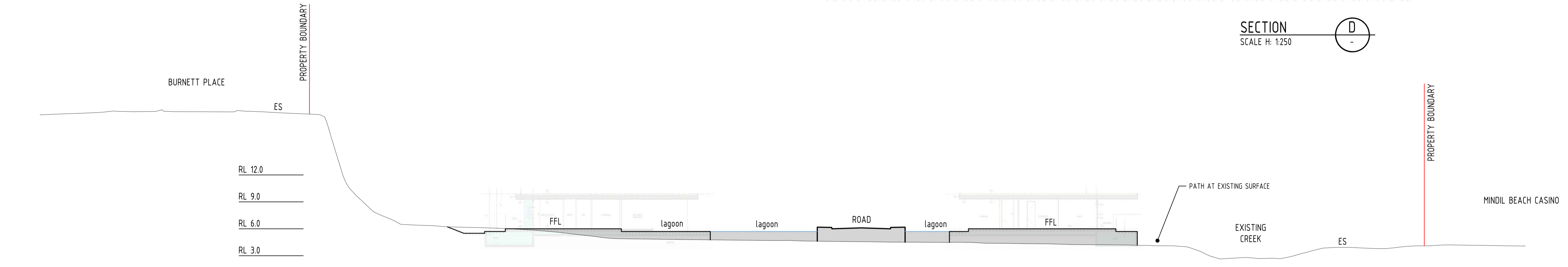
Client  
**KTT Investments Pty Ltd**  
 Project Name  
**LITTLE MINDIL BEACH  
 THE GARDENS, NORTHERN TERRITORY**

| Discipline  |            | Status      |  | Title                 |  |
|-------------|------------|-------------|--|-----------------------|--|
| CIVIL       |            | INFORMATION |  | PRELIMINARY SITE PLAN |  |
| Designed By | Checked By | Approved By |  | Drawing No.           |  |
| HD          | HD         | BL          |  | DA_C100               |  |
| Project No. | Drawn By   | Scale at A1 |  | Revision              |  |
| 23085       | DG         | AS SHOWN    |  | B                     |  |

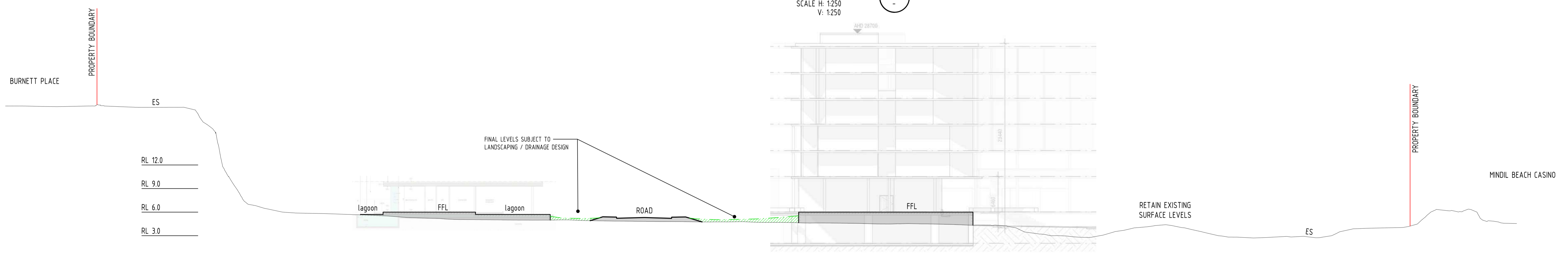
The concepts and information contained in this document are the copyright of ADG Engineers (Aust) Pty Ltd. Use or copying of the document in whole or in part without the written permission of ADG Engineers (Aust) Pty Ltd constitutes an infringement of copyright. Do not scale drawings. If in doubt, ask!



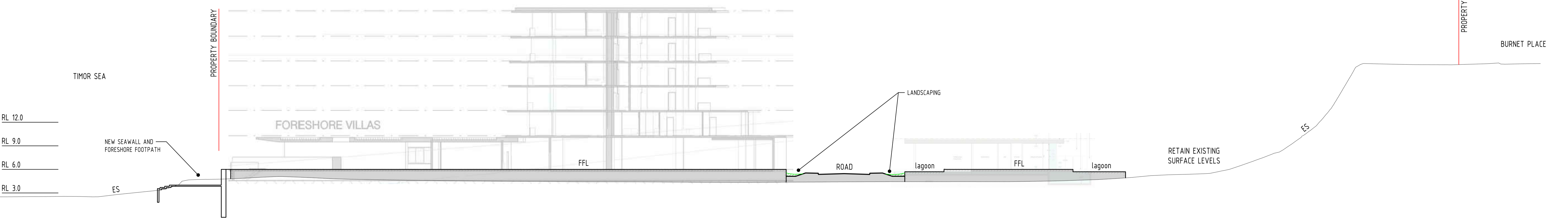
SECTION D  
SCALE H: 1:250



SECTION C  
SCALE H: 1:250  
V: 1:250



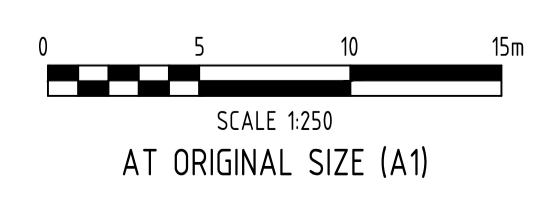
SECTION B  
SCALE H: 1:250  
V: 1:250



SECTION A  
SCALE H: 1:250  
V: 1:250

ISSUED FOR INFORMATION ONLY

| Rev | Date     | Description            | By | Chk |
|-----|----------|------------------------|----|-----|
| B   | 17.06.21 | ISSUED FOR INFORMATION | AM | HD  |
| A   | 28.05.21 | ISSUED FOR INFORMATION | HD | HD  |

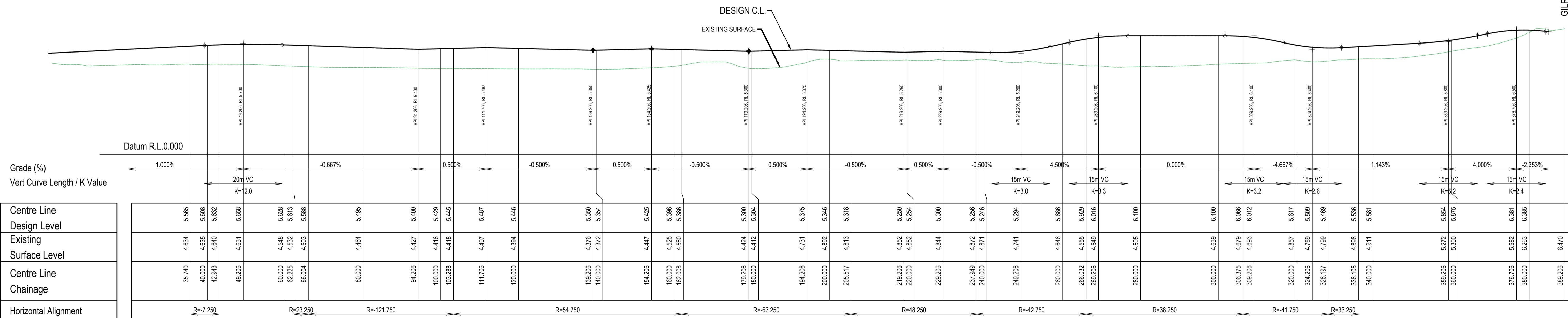
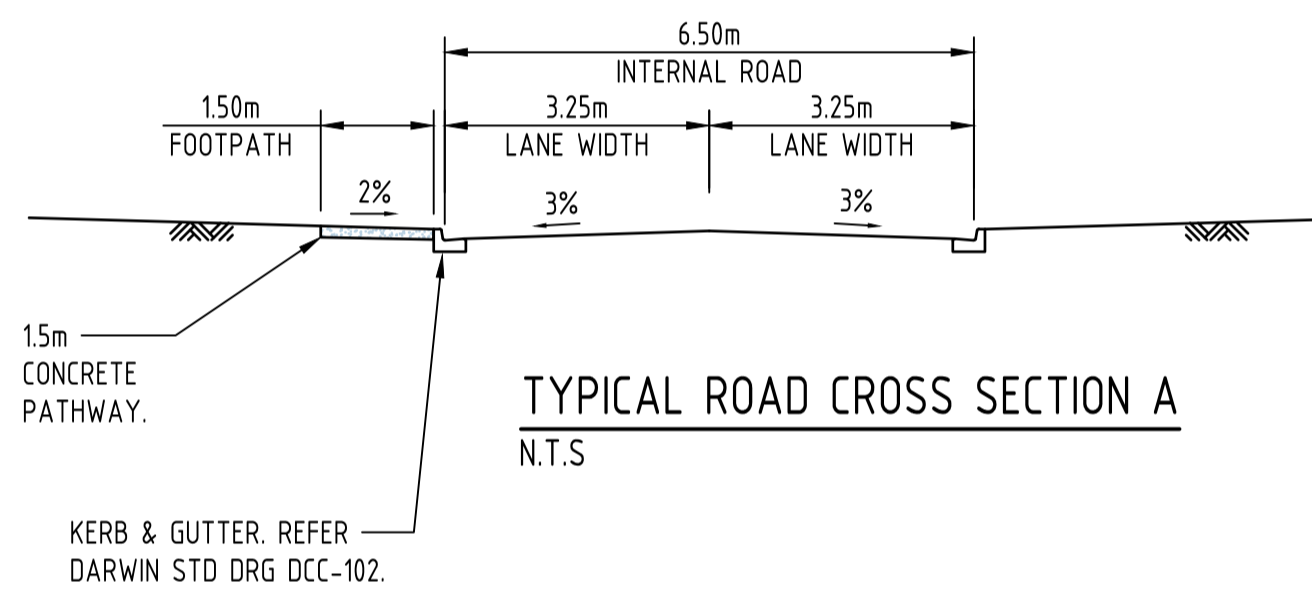
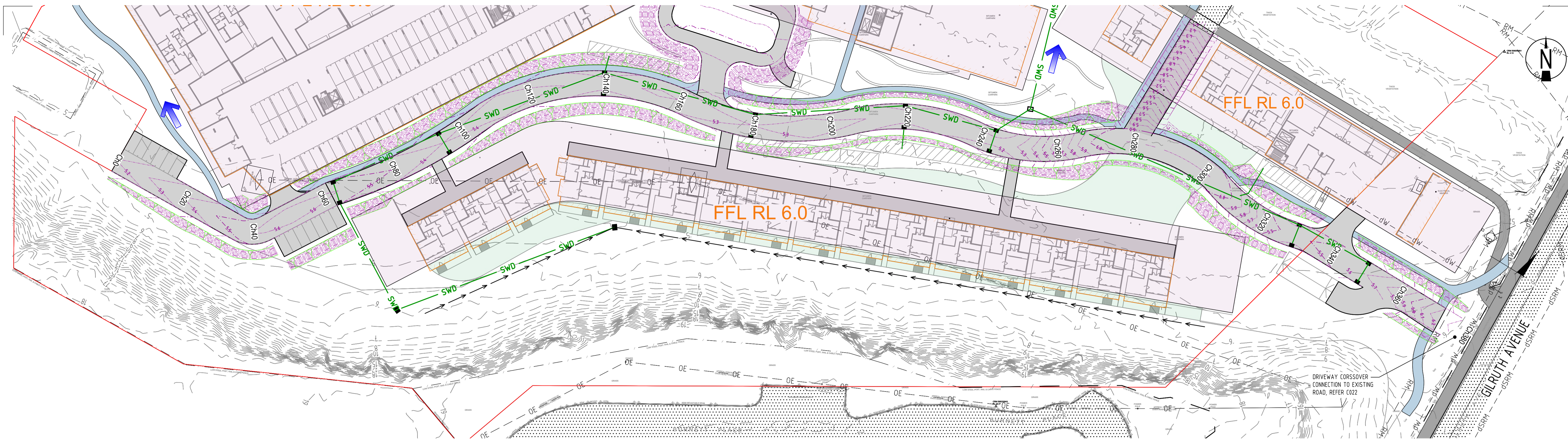


**ADG**  
 Darwin Office  
 Suite G01, Manunda Place, 38 Cavenagh Street,  
 Darwin, Northern Territory 0800, Australia  
 GPO Box 2422, Darwin, Northern Territory 0801  
 T 1300 657 402 F +617 3871 2266  
 E info@adgce.com W www.adgce.com  
 BRISBANE / DARWIN / GOLD COAST / MELBOURNE / PERTH /  
 SUNSHINE COAST / SYDNEY / TOOWOOMBA

Client: KTT Investments Pty Ltd  
 Project Name: LITTLE MINDIL BEACH THE GARDENS, NORTHERN TERRITORY

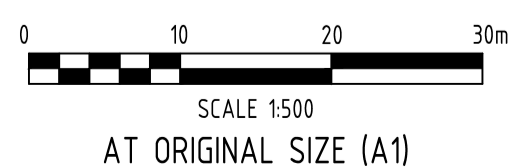
| Discipline  |            | Status      |  |
|---|------------|-------------|--|
| CIVIL   |            | INFORMATION |  |
| Designed By   | Checked By | Approved By |  |
| HD  | HD         | BL          |  |
| Project No.   | Drawn By   | Scale at A1 |  |
| 23085   | DG         | AS SHOWN    |  |
| The concepts and information contained in this document are the copyright of ADG Engineers (Aust) Pty Ltd. Use or copying of the document in whole or in part without the written permission of ADG Engineers (Aust) Pty Ltd constitutes an infringement of copyright. Do not scale drawings. If in doubt, ask! |            |             |  |

| Title                     |          |
|---------------------------|----------|
| PRELIMINARY SITE SECTIONS |          |
| Drawing No.               | Revision |
| DA_C101                   | B        |



ISSUED FOR INFORMATION ONLY

| Rev | Date     | Description            | By | Chk |
|-----|----------|------------------------|----|-----|
| B   | 17.06.21 | ISSUED FOR INFORMATION | AM | HD  |
| A   | 28.05.21 | ISSUED FOR INFORMATION | HD | HD  |

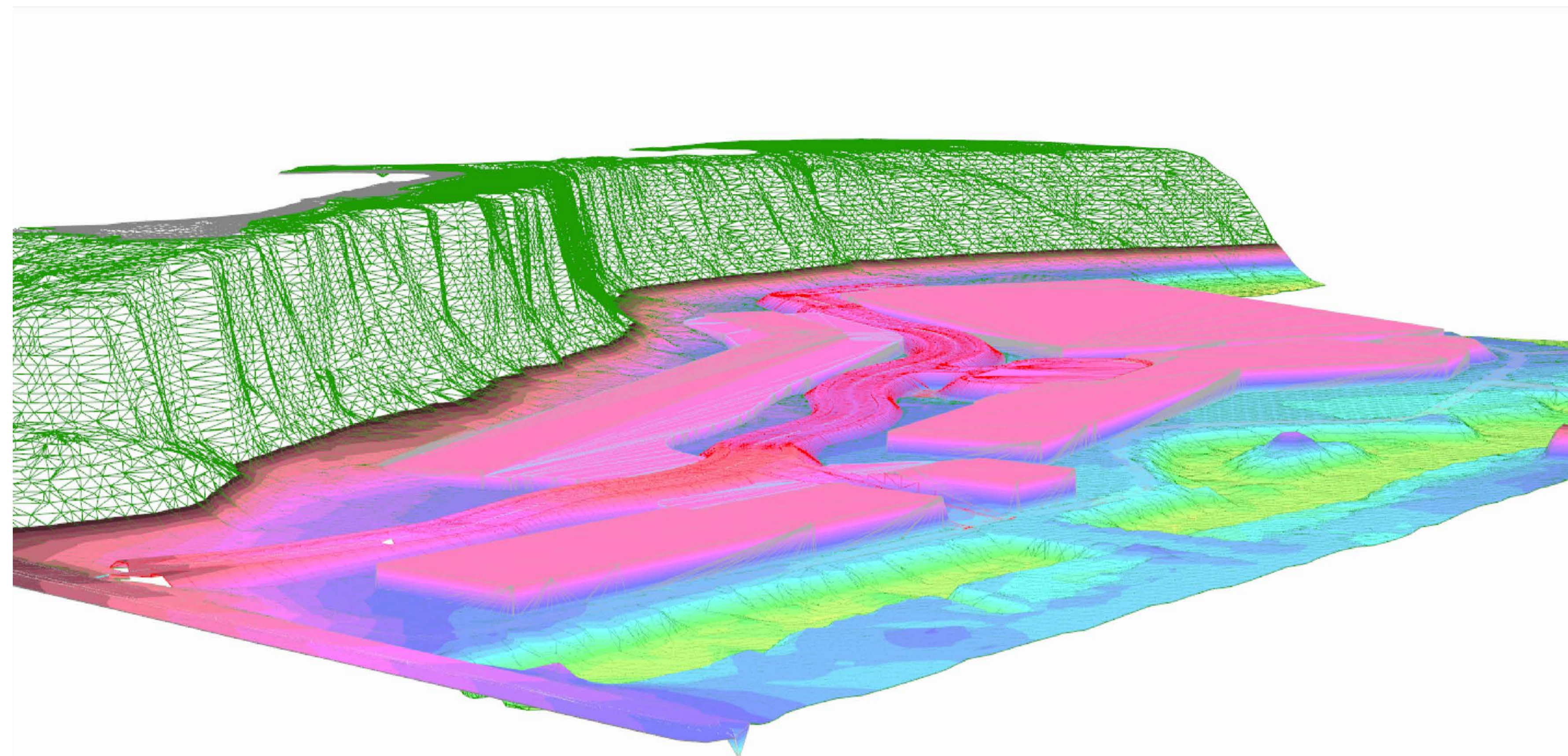
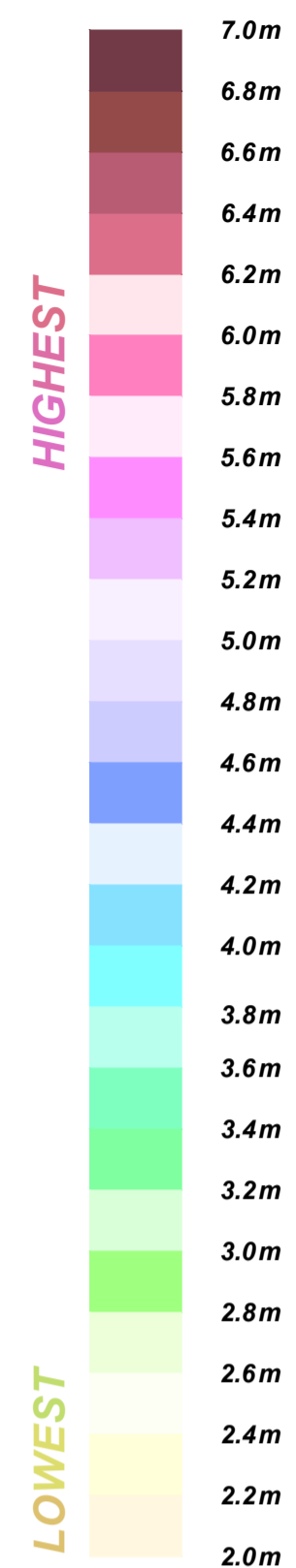


**Darwin Office**  
Suite G01, Manunda Place, 38 Cavenagh Street,  
Darwin, Northern Territory 0800, Australia  
GPO Box 2422, Darwin, Northern Territory 0801  
T 1300 657 402 F +617 3871 2266  
E info@adg.com W www.adg.com

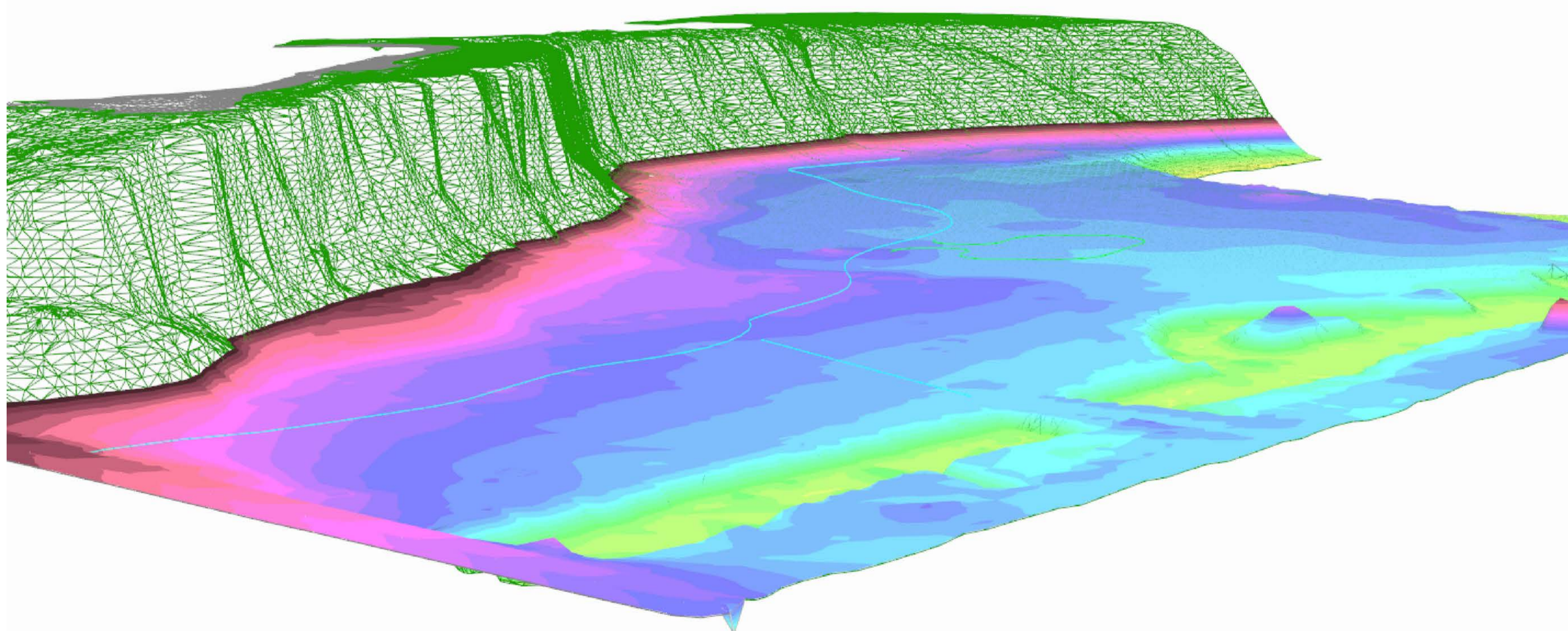
Client: **KTT Investments Pty Ltd**  
Project Name: **LITTLE MINDIL BEACH THE GARDENS, NORTHERN TERRITORY**

Discipline: **CIVIL**  
Status: **INFORMATION**  
Designed By: **HD** Checked By: **HD**  
Project No: **23085** Drawn By: **DG** Scale at A1: **AS SHOWN**

Title: **PRELIMINARY ROADWORKS LONGITUDINAL SECTION**  
Drawing No: **DA\_C102** Revision: **B**



FINISHED SURFACE



EXISTING SURFACE

ISSUED FOR  
INFORMATION ONLY

| Rev | Date     | Description            | By | Chk |
|-----|----------|------------------------|----|-----|
| B   | 17.06.21 | ISSUED FOR INFORMATION | AM | HD  |
| A   | 28.05.21 | ISSUED FOR INFORMATION | HD | HD  |



**Darwin Office**  
Suite G01, Manunda Place, 38 Cavenagh Street,  
Darwin, Northern Territory 0800, Australia  
GPO Box 2422, Darwin, Northern Territory 0801  
T 1300 657 402 F +617 3871 2266  
E info@adgce.com W www.adgce.com  
BRISBANE / DARWIN / GOLD COAST / MELBOURNE / PERTH /  
SUNSHINE COAST / SYDNEY / TOOWOOMBA

|  |                      |                       |   |
|--|----------------------|-----------------------|---|
| Client<br>KTT Investments Pty Ltd  | Discipline<br>CIVIL  | Status<br>INFORMATION | Title<br>SURFACE COMPARISON             |
| Project Name<br>LITTLE MINDIL BEACH<br>THE GARDENS, NORTHERN TERRITORY   | Designed By<br>HD    | Checked By<br>HD      | Approved By<br>BL                       |
|  | Project No.<br>23085 | Drawn By<br>DG        | Scale at A1<br>AS SHOWN                 |
| <small>The concepts and information contained in this document are the copyright of ADG Engineers (Aust) Pty Ltd. Use or copying of the document in whole or in part without the written permission of ADG Engineers (Aust) Pty Ltd constitutes an infringement of copyright. Do not scale drawings. If in doubt, ask!</small> |                      |                       | Drawing No.<br>DA_C103<br>Revision<br>B |