

Weddell: Tropical, Sustainable, Liveable Conference and Design Forum Highlights

[Day 1](#) | [Day 2 - Day 4](#) | [Day 5](#) | [Speakers and Conference Team](#)

Day 1 - Monday 27 September 2010

Day 1 Highlights

[Alternative Video Format:
Windows Media Audio / Video \(.wmv 9.3MB\)](#)

Welcome

On the first day of the Towards 2030: Conference and Design Forum Chief Minister Paul Henderson welcomed the public and design team members to their task of building the future city of Weddell.

The conference is part of the Territory 2030 plan, a 20-year strategy released in late 2009 to create a place where Territorians and future generations will want to live.

“A city is about people; first and foremost, it’s about communities and the built forms supporting the developments of its citizens.

“We are talking about planning a new, wonderful, tropical, sustainable and liveable city from the ground up,” the Chief Minister said.

The Chief Minister said the rapidly growing economy and significant growth in population are some of

the reasons why planning should start now so Weddell is ready to provide about 15,000 new homes as part of a 'growth triangle' Darwin, Palmerston and the rural area.

"The people we have here today are genuinely thrilled with the opportunity to turn a 3000 hectare greenfields site into something that is real and tangible for everyone," he said.

International Delegation Attends Forum



The Weddell forum has attracted the attention of a key Japanese delegation, with a team from Hitachi visiting Darwin for talks with various government departments about renewable energy solutions that might be applied to the Territory's unique environment.

Hitachi is a world leader in environmentally sustainable technologies. In April the company launched its Smart City Unit, which incorporates a number of renewable energy options designed to encourage low carbon societies

and water recycling.

Some of the ideas include:

- Solar arrays on top of car parks and public buildings
- Smart grids that allow the combined resources of different renewable energies to be fed into a grid, reducing fluctuations in power supply to the grid from weather-dependent systems (such as wind and solar power)
- water treatment and recycling plants
- technologies that use photovoltaic systems and batteries

Presentations and Discussions

Territory 2030 Strategic Plan and Weddell

Vicki O'Halloran, Territory 2030 Steering Committee Co-Chair, Independent Advisor to the 2030 Cabinet Sub-Committee



Vicki is the Chief Executive Officer of Somerville Community Services, a local community organisation providing a wide scope of welfare services throughout the Top End.

In late 2008 Vicki was appointed by the Chief Minister as co-chair of the Territory 2030 Strategic Plan and has a continuing role with the Territory 2030 Cabinet Sub-Committee.

Read Vicki O'Halloran's Speech:

-  [Speech - pdf \(89KB\)](#)

[Back to top](#)

Why Weddell?

Dr David Ritchie, Chief Executive, Department of Lands and Planning



View Dr David Ritchie's presentation:

- [Powerpoint pps](#) (1.4MB)
- [pdf](#) (600KB)



Dr David Ritchie returned this year to head the Department of Lands and Planning, where earlier in his career he gained experience in the role of Executive Director.

Dr Ritchie has worked in the Northern Territory Public Sector since 1981. For over 18 years he has held positions of Chief Executive in several departments, established two new agencies and developed systems for institutional reform.

Prior to heading the Department of Lands and Planning, Dr Ritchie held the role of Chief Executive of the Department of Local Government and Housing, where he was responsible for reform of local government and public housing across the Territory. Dr Ritchie was the foundation Chief Executive of both the Aboriginal Areas Protection Authority from 1989-2002 and the Department of Natural Resources, Environment and The Arts, from 2005 to 2008.

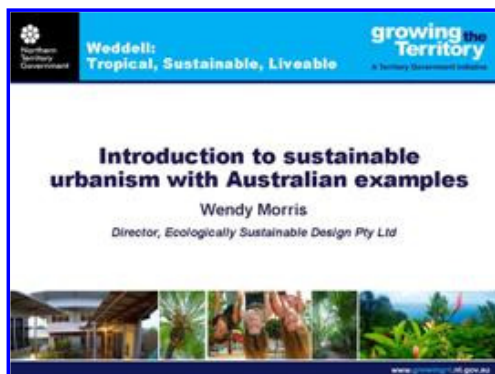
[Back to top](#)

Introduction to sustainable urbanism with Australian examples

Wendy Morris, Director, Ecologically Sustainable Design Pty Ltd



Wendy Morris is a Director of Ecologically Sustainable Design (ESD), a Melbourne based urban design and planning consultancy specialising in New Urbanism, sustainable growth management and mixed use



View Wendy Morris' presentation:

- [Powerpoint pps](#) (7.5MB)
- [pdf](#) (6.1 MB)

[Back to top](#)

Weddell overview

Brendan Lawson, Project Manager / Principal Engineer, Weddell Taskforce, Department of Lands and Planning



View Brendan Lawson's presentation:

- [Powerpoint pps](#) (15.4MB)
- [pdf](#) (620KB)



Brendan is a civil engineer with a background in construction of transport infrastructure.

He has held a number of senior project management roles including project administrator of the Darwin Waterfront Project and a coordinating role for the Department of Lands and Planning in the expansion of Darwin's East Arm Port and Inpex projects. His role in the Department of Lands and Planning includes leading the Weddell City taskforce.


[Back to top](#)

The leading edge of sustainable cities and why we need to change from situation normal

Paul Murrain, Urban Designer, London



View Paul Murrain's presentation:

-  pdf (10.4MB)



Paul Murrain is an urban design consultant, and former senior lecturer and course chairman at the Joint Centre for Urban Design in Oxford,

England.

From May 2002 – April 2005 he was senior designer at the HRH The Prince of Wales Foundation for the Built Environment. Paul was appointed as Visiting Professor at the University of Greenwich in 2007 and he is a senior fellow at the Prince's Foundation.

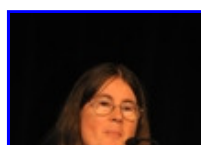
He is joint author of a book entitled "Responsive Environments: A Manual For Designers," which sets out the design qualities necessary to produce a physical environment that is choice laden, interactive and essentially democratic for everyday users of the public realm of our towns and cities. Paul has been a member of the Congress for the New Urbanism in the USA since its inception in 1992.

Paul has carried out many consultancy commissions in Australia, with Ecologically Sustainable Design (ESD) and has undertaken visiting lectureships at the Universities of Sydney, Melbourne and Adelaide.

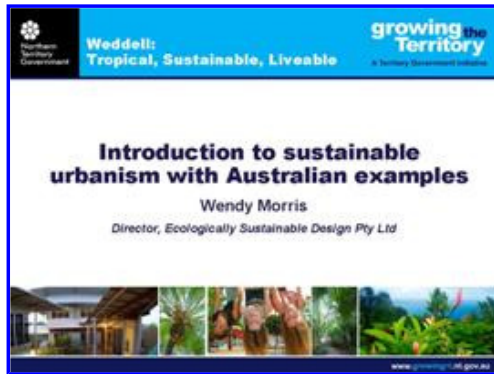
[Back to top](#)

Introduction to sustainable urbanism with Australian examples

Wendy Morris, Director, Ecologically Sustainable Design Pty Ltd



Wendy Morris is a Director of Ecologically Sustainable Design (ESD), a Melbourne



View Wendy Morris' presentation:

- [Powerpoint pps](#) (7.5MB)
- [pdf](#) (6.1 MB)

based urban design and planning consultancy specialising in New Urbanism, sustainable growth management and mixed use development. ESD is known for its Enquiry by Design participatory process, working in Australia and internationally.

Wendy is an inaugural member of the Congress for the New Urbanism and has been actively promoting New Urbanist approaches in Australia and New Zealand for more than 16 years.

[Back to top](#)

Essence of Darwin character – how do we capture it for Weddell?

Panel Discussion - Leading Local Designers, Chaired Stephen Bowers

A panel of local and interstate designers and housing experts were invited to discuss a topic and answer questions from the public, chaired by Stephen Bowers.

The panel discussed how to capture the essence of Darwin for the design of Weddell.

Panel included:

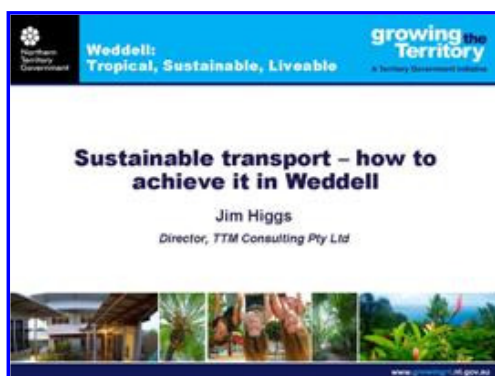
- Steven Huntingford, Jackman Gooden Architects
- Greg McNamara, Troppo Architects
- Peter Nelson, Tract
- Keith Savage, Hames Sharley (NT) Pty Ltd
- Nicole Wheeler, Nicole Wheeler Designs.

Alternative Video Format:
[Windows Media Audio / Video \(.wmv 9.3MB\)](#)

[Back to top](#)

Sustainable transport – how to achieve it in Weddell

Jim Higgs, Director TTM Consulting Pty Ltd



Jim Higgs has experience in planning and design management across a broad field of traffic engineering and transport related projects in eastern Australia and internationally.

View Jim Higgs' presentation:

- [Powerpoint pps \(3.5MB\)](#)
- [pdf \(1.2MB\)](#)

Jim has been involved with many innovative design solutions for residential developments on difficult sites. He has developed an appreciation of the planning and building application process through his experience and ongoing involvement working with various councils, and is familiar with the special requirements for local

government engineering.

[Back to top](#)

The Darwin market – how can it be improved to deliver diverse housing in Weddell? And what density suits our climate and culture?

Panel Discussion - Leading Local Designers, Chaired Stephen Bowers

The second panel discussed the Darwin market and how it can be improved to deliver diverse houses in Weddell. What density suits our climate and culture?

Panel included:

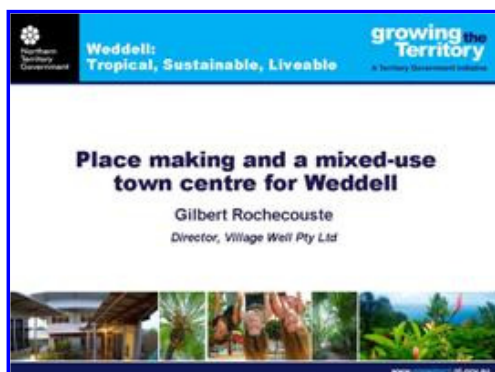
- Justin Gill, Abode Homes
- Cara Doonan, Urban Pacific
- Vicki O'Halloran, Somerville Community Services
- Steve Bennett, Professionals Darwin

Alternative Video Format:
[Windows Media Audio / Video \(.wmv 9.3MB\)](#)

[Back to top](#)

Place making and a mixed-use town centre for Weddell

Gilbert Rochecouste, Director, Village Well Pty Ltd



View Gilbert Rochecouste's presentation:

- [Powerpoint pps \(37MB\)](#)
- [pdf \(6.2MB\)](#)



Gilbert Rochecouste is recognised nationally and internationally as a leading voice in sustainable communities and businesses. He is a sought after speaker and motivator, known

for his innovative thinking, dynamic engagement processes, and inspirational approach to his community activation. His ideas have reinvigorated iconic places and enlivened many urban and rural communities.

Gilbert is one of the world's leading Place Making practitioners and passionately promotes the new story of living, playing and working in ways that support the cultural, social and environmental elements that are unique to each place.

[Back to top](#)

Weddell our future – what do we want?

Facilitated consultation in small groups



The attendees of the Public Open Day were asked to break up into groups and discuss what is important to build the future city of Weddell. The groups were made up of people of all ages and varied work experiences, their thoughts and ideas were considered during the design process.

[What do we want?](#)

[Back to top](#)

Weddell: Tropical, Sustainable, Liveable Conference and Design Forum Highlights

[Day 1](#) | [Day 2 - Day 4](#) | [Day 5](#) | [Speakers and Conference Team](#)

Day 2 - Day 4

Tuesday 28 - Thursday 30 September 2010

Stakeholder Forums

On the afternoon of Tuesday 28 September, consultation sessions were held concurrent to the design forum, with various community stakeholders.

These sessions explored elements critical to the success of Weddell as a tropical, sustainable, liveable city and provided an additional opportunity for these stakeholder groups to inform the design process.

[Read the comments from community stakeholder groups.](#)

Introduction to Design Forum

The design teams were each made up of seven people with a mix of local, interstate and international designers and planners, research experts and people with local knowledge and an understanding of the Darwin lifestyle.

Eight design teams were each given a different scenario and to explore how Weddell might be developed as part of the Territory 2030 plan. Their jobs were to:

- work out how Weddell can play a part in the greater region
- determine where to put infrastructure
- test the accuracy of technical information
- inform the best places to put major infrastructure in order to guide immediate and longer-term decision-making
- test how Weddell can develop as a sustainable city.

Overview of Design Forum Process



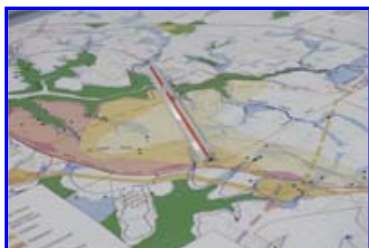
View the Presentation:

- [Powerpoint \(5.2MB\)](#)

Design Teams at Work



[Back to top](#)



[Back to top](#)





[Back to top](#)

Preliminary Design Reviews



[Back to top](#)

Weddell: Tropical, Sustainable, Liveable Conference and Design Forum Highlights

[Day 1](#) | [Day 2- Day 4](#) | [Day 5](#) | [Speakers and Conference Team](#)

Day 5 - Friday 1 October 2010

Conference Conclusion

[Conference Highlights](#)

Alternative Video Format:
[Windows Media Audio / Video \(.wmv 14MB\)](#)

Final Presentation

Wendy Morris gave an overview of the design stages and presented the final outcomes of each team's work.

As part of the conference, Territorians were invited to provide their own thoughts and ideas about what should be included in Weddell. Concurrent meetings were held with local government, green industry, social inclusion and youth groups. The feedback given was considered by teams as part of the design process.

Wendy explained the unique challenges of building in the Top End by pointing out the biting insect breeding grounds, growth regions of mangroves and the change of water flow in the wet season compared to the dry.

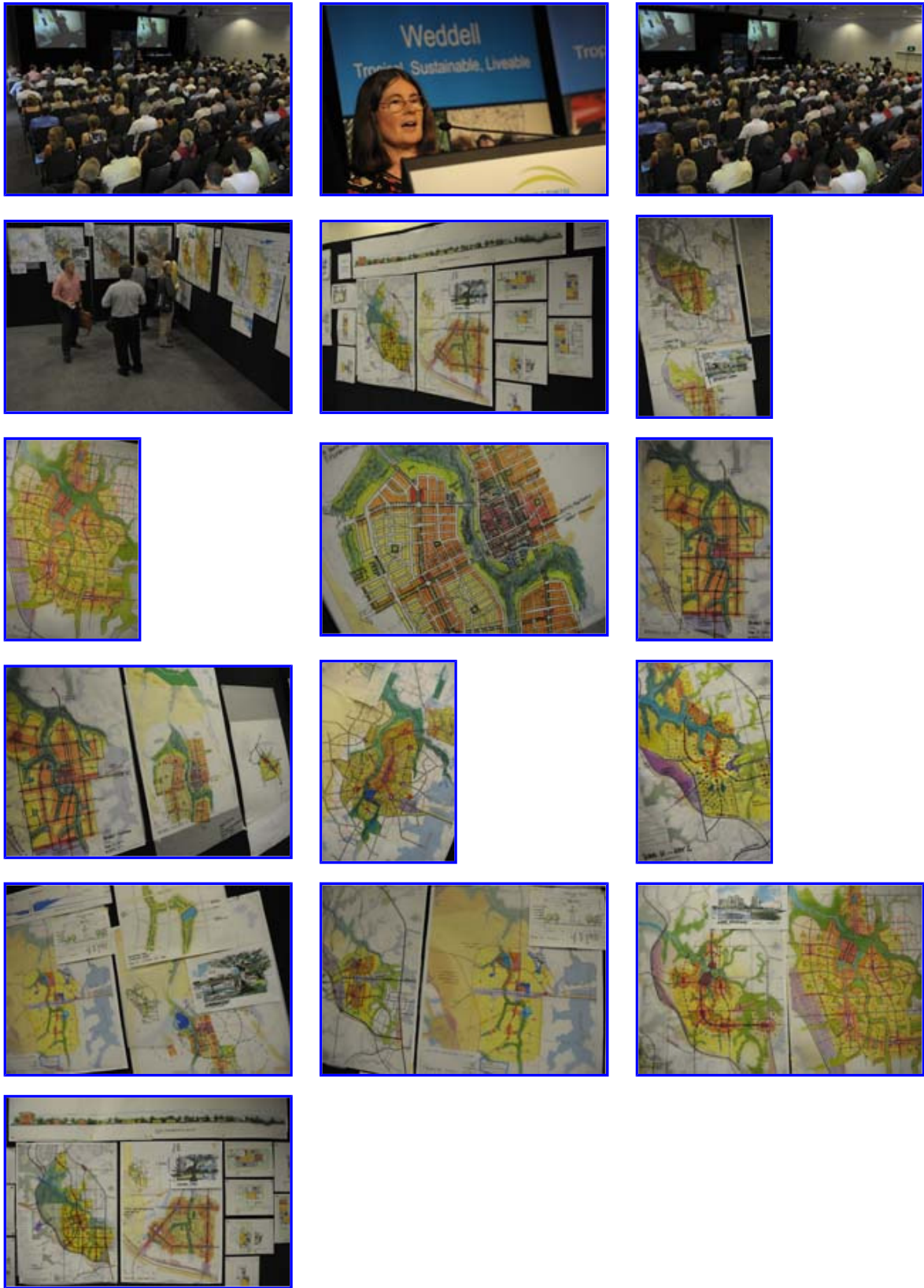
The final outcomes addressed issues of transport, infrastructure, location and available facilities, industry and the environment. A detailed public report will be released at the end of November.

The Urban Design Advisory Panel will assess the design outcomes of each team. Their work will

inform a national design competition that architects and planners will be invited to enter.

[Back to top](#)

Overview of Design Stages and Presentation of Design Team's Work



[Back to top](#)

Conference Conclusion



[Back to top](#)



Paul Murrain
Urban Designer, London

Keynote Speaker and Design Team Leader

Paul is a former senior lecturer and course chairman at the Joint Centre for Urban Design in Oxford, England, senior design director at HRH The Prince of Wales' Foundation for the Built Environment and visiting professor at the University of Greenwich.

Paul has worked on projects in the USA, Europe, Malaysia and Scotland. He has taught a postgraduate course in Suburban and Town Design at the University of Miami and was invited to Yale for studio teaching and reviews. He has been a member of the Congress for The New Urbanism in the USA since its inception in 1992.

He is also a member of the Office of the Deputy Prime Minister's Design (OPDM) Coding Advisory Panel and the UK Government's Commission for Architecture and the Built Environment (CABE) Expert Panel on Strategic Urban Design.

A joint author of the book *Responsive Environments: A Manual For Designers*, Paul has carried out many consultancy commissions in Australia and has undertaken visiting lectureships at the universities of Sydney, Melbourne and Adelaide.



Wendy Morris
Director, Ecologically Sustainable Design Pty Ltd

Keynote Speaker and Design Forum Facilitator

Wendy is an inaugural member of the USA Congress for the New Urbanism and the Australian Council for New Urbanism and has a comprehensive knowledge of New Urbanist practices across Australia.

Ecologically Sustainable Design (ESD), which specialises in New Urbanism, is known for its Enquiry/by/Design approach. Based in Melbourne, ESD practises across Australia and internationally.

Since the mid-1990s, ESD has been undertaking regional-scale structure plans for more sustainable development in greenfield and revitalisation contexts. The principles behind their approach have been embraced in Western Australia's Liveable Neighbourhoods Code and have been applied across Australia, in New Zealand and the UK.



Stephen Bowers
Director, Novus Urban Pty Ltd

*Keynote Speaker
 and Design Forum Facilitator*

Stephen, a surveyor by profession, has over 25 years experience as managing director of Jensen Bowers Group Consultants, a Brisbane-based surveying, engineering and town planning consultancy. After retiring from Jensen Bowers in 2001 Stephen set up Innovative Development Solutions Pty Ltd, a boutique consultancy with a strong interest in Enquiry/by/Design.

Stephen has chaired Enquiries by Design at Noosa North Shore, Redland Bay, Lennox Head, Coffs Harbour and the acclaimed award-winning Wynnum CBD Urban Renewal Charrette. He promotes Enquiry/by/Design as the first choice for dealing with complex projects and complex issues within the community.



Chip Kaufman
Director, Ecologically Sustainable Design Pty Ltd

Keynote Speaker and Design Team Leader

Chip is an urban designer and licensed architect with professional experience in Australia, New Zealand, USA, Canada, China and the UK.

After moving to Australia from North America in 1994 Chip established Ecologically Sustainable Design (ESD) as a specialist New Urbanism and architecture consultancy. Chip introduced the Charrette process to Australia and has been leader and/or lead designer for many Charrettes in a variety of locations.

Chip manages development applications for large and complex urban projects, such as Tullimbar Village, a mixed-use urban development in New South Wales. He also designs mixed-use and medium-density buildings as well as specific civic and community buildings.

He regularly presents at national and international conferences on issues including mixed use development, collaborative design processes and sustainable urbanism.



Peter Richards
Director, Deicke Richards Architects

Keynote Speaker and Design Team Leader

Peter is a registered architect with a masters of Urban Design. He is a director of Brisbane-based multi-disciplinary practice Deicke Richards. His expertise covers design at all scales and types from regions to centres, places and buildings.

An Adjunct Professor in the School of Built Environment and Engineering at Queensland University of Technology, Peter chairs the Board of the Centre for Subtropical Design. He combines practice and research and he is sought after for his skills in Enquiry/by/Design.



Jim Higgs
Director, TTM Consulting Pty Ltd

Keynote Speaker and Design Team Leader

Jim has considerable experience in planning and design management across a broad field of traffic engineering and transport related projects in Australia and internationally.

His experience includes roadworks, traffic management, parking, residential and industrial subdivisions, town and city centre, integrated land use planning, recreation facilities, and includes economic analysis.

Jim has several years of experience in local government and has been involved in a number of innovative design solutions for residential developments on difficult sites. He has provided the traffic engineering input for a range of comprehensive developments of large scale projects including district centres, major residential and mixed use projects, recreational and tourism projects.



Gilbert Rochecouste
Director, Village Well Pty Ltd
Keynote Speaker

Gilbert is recognised nationally and internationally as a leading voice in sustainable communities and businesses. A sought after speaker and motivator, he is known for his innovative thinking, dynamic engagement processes, and inspirational approach to community activation.

He has worked with hundreds of communities and businesses over the past 17 years and is one of the world's leading practitioners in place making.

As one of the first AI Gore Climate Leaders, Gilbert sees the potential of place making to inspire a deeper environmental awareness and stewardship, where people can make a difference locally and globally.



Chris Humphries
Project Advisor, Weddell Taskforce
Department of Lands and Planning
Design Team Leader

Chris has 25 years experience in civil engineering design and town planning. From the design of urban infrastructure for local government, through the assessment of a wide range of development proposals across the Top End, to strategic planning and land use concepts for many locations; Chris has developed a focus on land use capability in the Territory.



Vicki O'Halloran
Co-Chair, Territory 2030
Steering Committee
Keynote Speaker

Vicki is chief executive officer of Somerville Community Services, a local community organisation that provides a range of welfare services throughout the Top End of the Northern Territory.

She sits on a number of boards and committees at a Territory and national level. Vicki is chair of the Northern Territory Housing Appeals Board and Secretary of the Northern Territory Council of Social Services.



Clive Alcock
Director, Annand Alcock Pty Ltd
Keynote Speaker and Design Team Leader

Clive is an urban design consultant who has been based in Sydney for 20 years.

Brought up in a small village in England, Clive studied and worked in Manchester, Oxford and London before emigrating to Australia to pursue urban design. He has a keen interest in the design and development of street based town centres in contrast to the people-unfriendly shopping malls.



Brendan Lawson
Principal Engineer Strategic
Planning, Department of Lands
and Planning
Keynote Speaker

Brendan is a civil engineer with a background in construction of transport infrastructure.

He has held a number of senior project management roles including project administrator of the Darwin Waterfront Project and a coordinating role for the Department of Lands and Planning in the expansion of Darwin's East Arm Port and Inpex projects. His role in the Department of Lands and Planning includes leading the Weddell City taskforce.



Malcolm Mackay
Founder, Mackay Urban Design
Design Team Leader

Malcolm is a UK registered architect of over 20 years experience. He practised architecture for many years in Milton Keynes and London before deciding to heed the call of urban design. After four years as a senior urban designer in State Government in Western Australia, Malcolm returned to private practice and formed Mackay Urban Design. A talented all-rounder, Malcolm has a particular interest in town centre design, the relationship between land use and transport, and the sustainability of places.



Evan Jones
Director Planning, Multiplex Living
Design Team Leader

Evan Jones is the national Director - Planning, Multiplex Living at Brookfield Multiplex. He is a town planner and urban designer with 30 years experience. Evan has also held senior positions in Government. He prepared the recent draft South East Queensland Regional Plan, and the current Sydney Metropolitan Strategy, including plans for Western Sydney Land Release.

Evan was also an executive director for Planning in Western Australia where he developed the Liveable Neighbourhoods Community Design Code and was instrumental in the urban renewal projects including Armadale and Midland.

Evan remains keenly involved in public policy as the chair for the Centre for Built Environment and Health at the University of Western Australia; an adjunct professor at the Institute for Sustainability and Technology Policy, Murdoch University; and inaugural chair of the Australian Council for New Urbanism.



Steven Tighe
Director, Chasing Sunrises
Keynote Speaker

Steve Tighe is a Strategic Foresight specialist whose focus is identifying emerging trends and the early signals of disruptive change. Steve has a Masters in Strategic Foresight from Swinburne University and in 2007 he completed the Oxford Scenarios Programme at Oxford University.

Prior to becoming Foresight Manager, Steve worked extensively in the area of Consumer Insights, and he has a Level 2 certificate in Spiral Dynamics from the National Values Centre (USA). Spiral Dynamics is a leading technique in understanding how people think, and how thinking evolves over time. Steve is a leading speaker on Strategic Foresight and emerging trends who has presented his thoughts on the future at conferences around the world. He is a Professional Member of the Australasian Futures and Foresight Association and is also a member of the World Future Society.

