



Little Mindil Beach

25 Gilruth Avenue, The Gardens,
Northern Territory

Hydraulic Assessment

KTT Investments Pty Ltd

17 June 2021

Document Verification

Job Title **Little Mindil Beach**
 Job Number 23085
 Document Title Hydraulic Assessment

Document Control

Date	Document	Revision No.	Author	Reviewer
01 February 2021	Hydraulic Assessment	01	J. McDonald	H. Davidson
09 June 2021	Hydraulic Assessment	02	J. McDonald	H. Davidson
17 June 2021	Hydraulic Assessment	03	J. McDonald	H. Davidson

Approval for Issue

Name	Signature	Date
Joe McDonald		17 June 2021
Harris Davidson		17 June 2021

© Document copyright of ADG Engineers (Aust) Pty Ltd

This document is and shall remain in the property of ADG. The document may only be used for the purpose for which it was commissioned and in accordance with the Terms of Engagement for the commission. Unauthorised use of this document in any form whatsoever is prohibited.

To the extent permitted by law, ADG expressly disclaims and excludes liability for any loss, damage, cost or expenses suffered by any third party relating to or resulting from the use of, or reliance on, any information contained in this report. ADG does not admit that any action, liability or claim exist or be available to any third party.

CONTENTS

1	INTRODUCTION	4
1.1	PURPOSE OF REPORT	4
1.2	PROPERTY DETAILS	4
1.3	EXISTING SITE	5
2	PROPOSED DEVELOPMENT	6
3	DATA COLLECTION	6
4	MODELLING PROCEDURE	6
5	HYDROLOGIC MODELLING	6
6	HYDRAULIC MODELLING	7
6.1	Model Setup	7
6.1.1	Manning's Coefficient	8
6.1.2	Inflow Locations	8
6.1.3	Existing Culverts	8
6.1.4	Downstream Boundary Condition	9
6.1.5	Model Extent	9
6.2	Existing Scenario	10
6.2.1	Existing Scenario Results	10
6.3	Post-Developed Scenario	12
6.3.1	Post-Developed Scenario Results	12
6.4	Storm Surge Flood Inundation	13
7	CONCLUSION	14

TABLE OF FIGURES

Figure 1	Locality Map (As accessed from Google maps 30.04.2020)	5
Figure 2	Existing Site Conditions (As accessed from Nearmap 30.04.2020)	5
Figure 3	Existing Culverts	9
Figure 4	Model Layout	10
Figure 5	Pre-Development Q100 Extent	11
Figure 6	Pre-Development Q100 Extent - Site	12
Figure 7	Post-Development Q100 Extent	13

TABLE OF TABLES

Table 1	Property Detail	4
Table 2	Critical Storm Details	7
Table 3	Manning's Table	8

APPENDICES

Appendix A	Architectural Drawings
Appendix B	Correspondence with NTG DENR
Appendix C	Flood Depth Plots

1 INTRODUCTION

ADG Engineers Pty Ltd (Aust) was engaged by KTT Investments Pty Ltd to prepare a hydraulic assessment for a proposed mixed-use development located at 25 Gilruth Avenue, The Gardens, Northern Territory.

This report was compiled using information from the following sources:

- Site Investigations;
- Northern Territory Government Topographical Data;
- Architectural drawings by Hachem;
- Survey Plan prepared by Land Surveys.

1.1 PURPOSE OF REPORT

This report has been prepared to define the flooding extent caused by local catchment flows and ensure that the proposed development does not adversely impact peak levels external to the subject site. Additionally, it will describe how the proposed buildings will be protected from storm surge inundation.

1.2 PROPERTY DETAILS

The total site area is approximately 5.13ha and the existing land titles are provided in **Table 1** below.

Table 1 Property Detail

Title	Lot 7651, Town of Darwin
Street Address	25 Gilruth Avenue, The Gardens, Northern Territory
Site Area	5.13 ha

Figure 1. displays the locality of the subject site. The site is bound by Gilruth Avenue to the south-east, the Mindil Beach casino to the north-east, the Timor Sea to the north-west and Burnett Place to the south.

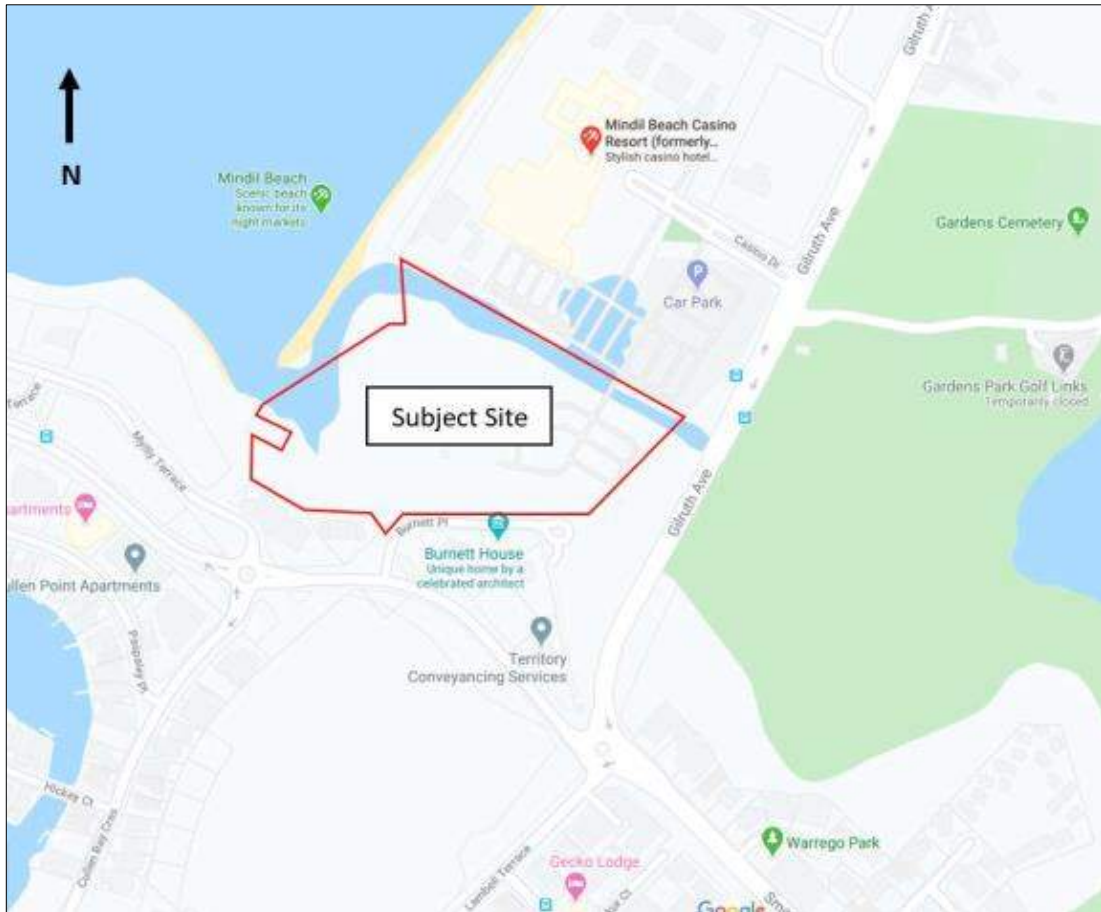


Figure 1 Locality Map (As accessed from Google maps 30.04.2020)

1.3 EXISTING SITE

The subject site generally falls from south to north at a grade of approximately 1%. The southern boundary of the site is comprised of a steep rock escarpment. The northern portion of the site contains a creek which drains a catchment to the west and discharges into the Timor Sea at Mindil Beach.



Figure 2 Existing Site Conditions (As accessed from Nearmap 30.04.2020)

2 PROPOSED DEVELOPMENT

The proposal will seek approval for development to create a multi-storey hotel, apartment and luxury villa precinct including commercial and function tenancies. The development does not propose any works within the exiting creek area, nor propose any additional crossings.

The site is identified as subject to storm surge as per the Northern Territory Storm Surge Mapping. Correspondence with NTG DENR Water Resources Division confirms that the Primary Storm Surge (PSS) level is 5.47 m AHD. The site is proposed to be filled to RL 5.80 m AHD to provide immunity from the PSS and an inclusion for freeboard. This filling is not expected to impact on peak storm surge levels.

This report will investigate flooding from local catchment flows only with a Medium High Water Springs (MHWS) tailwater applied.

3 DATA COLLECTION

A variety of data was collected and used as part of this analysis. The data and sources included:

- Design rainfall for the site based on Australian Rainfall and Runoff (AR & R) and Bureau of Meteorology (BOM) for the site;
- Existing topography for the site and surrounding areas based on data received from DIPL for the site and surrounding catchment; and
- Site Inspections to determine existing culvert sizes.

4 MODELLING PROCEDURE

Investigation of flood behaviour through the subject site required analysis and modelling of the upstream catchment and flow path behaviour. This involved:

- Hydrologic (Catchment) Analysis, to determine the catchment rainfall-runoff processes to produce peak flows. Hydrologic analysis was completed using data from AR&R and BOM.
- Hydraulic Modelling Analysis, which is used to simulate the flood behaviour of the catchment to produce flood levels, flow discharges and flow velocities. The model is also used to simulate conveyance to understand how water gets from one point to another. Hydraulic modelling was completed using TUFLOW software.

The steps used in each of these models for flood event simulation are described in the following sections below.

5 HYDROLOGIC MODELLING

To simulate rainfall events within the study area the rain-on-grid method has been utilised. This method applies rainfall directly to the 2D grid using rainfall depths sourced from the Bureau of Meteorology. The study area is suited to this hydrology input method as it contains several minor flowpaths converging to the creek outlet. The model calculates excess rainfall for each cell within the model based on the infiltration parameters of the specified surface type at that point. Impervious areas were assigned initial and continuing losses of 0 mm and 0 mm/hr respectively, while pervious areas were assigned initial and continuing losses extracted from the AR&R data hub, with pre-burst median rainfall subtracted from initial loss values to simulate wetting of the catchment prior to the design storm burst.

The 2D model has been run for storm durations from 10 minutes to 6 hours for each nominated AEP. An ensemble of 10 temporal patterns as determined from AR&R for each durations has been analysed. The following storm events were found to be critical for peak flow within the creek.

Table 2 Critical Storm Details

AEP	Critical Duration	Critical Temporal Pattern
63.2%	180 minutes	TP07
0.5EY	180 minutes	TP09
0.2EY	120 minutes	TP09
9.5%	90 minutes	TP05
4.9%	90 minutes	TP06
2%	120 minutes	TP07
1%	120 minutes	TP07

6 HYDRAULIC MODELLING

To assess flooding characteristics within the study area, a 1D/2D TUFLOW model was established. TUFLOW is capable of simulating flow for both small and large study areas using both 2-dimensional and 1-dimensional flow based on the topographic conditions of the study area.

6.1 Model Setup

The hydraulic model simulates the dynamic flooding behaviour along natural watercourses, constructed channels, and the floodplain. Setting up the hydraulic model involved:

- Create 2D surface using LiDAR data;
- Allocation of model boundaries;
- Input 1D elements such as pipes and culverts;
- Apply land uses based on infiltration characteristics; and
- Application of appropriate surface friction (Manning “n”)

Topography data of the site and surrounding area provided by DIPL was utilised to create the Digital Elevation Model (DEM) required for TUFLOW modelling of the existing scenario. A grid of 1m was used for modelling to best simulate the topographical condition of the site and increase the accuracy of the model results.

6.1.1 Manning’s Coefficient

Based on recommendations from Australian Rainfall and Runoff (AR&R), orthographic photos and a site inspection, Manning’s “n” was applied for the following areas shown in the table below.

Table 3 Manning’s Table

SURFACE	MANNINGS (n)
Medium Vegetation	0.08
Light Vegetation	0.06
Grass/Cleared Land	0.045
Roads/concrete	0.014

6.1.2 Inflow Locations

The rainfall inflow was modelled in TUFLOW using the rain-on-grid methodology. This method applies rainfall directly to the 2D grid using rainfall depths sourced from the Bureau of Meteorology.

6.1.3 Existing Culverts

The existing culverts in the model extent have been included as 1D elements. The culvert sizes are summarised in **Figure 3** below.



Figure 3 Existing Culverts

6.1.4 Downstream Boundary Condition

This flood assessment is focussed on local catchment flows rather than storm surge. Therefore a downstream boundary condition based on MHWS has been adopted. This level has been set at a fixed value of RL 2.9 m AHD.

6.1.5 Model Extent

The model extends over the entire catchment which contributes flow to the creek catchment. The creek further north of the site has also been included to capture any flow interaction to the east of Gilruth Avenue.

Figure 4 shows the TUFLOW model layout.

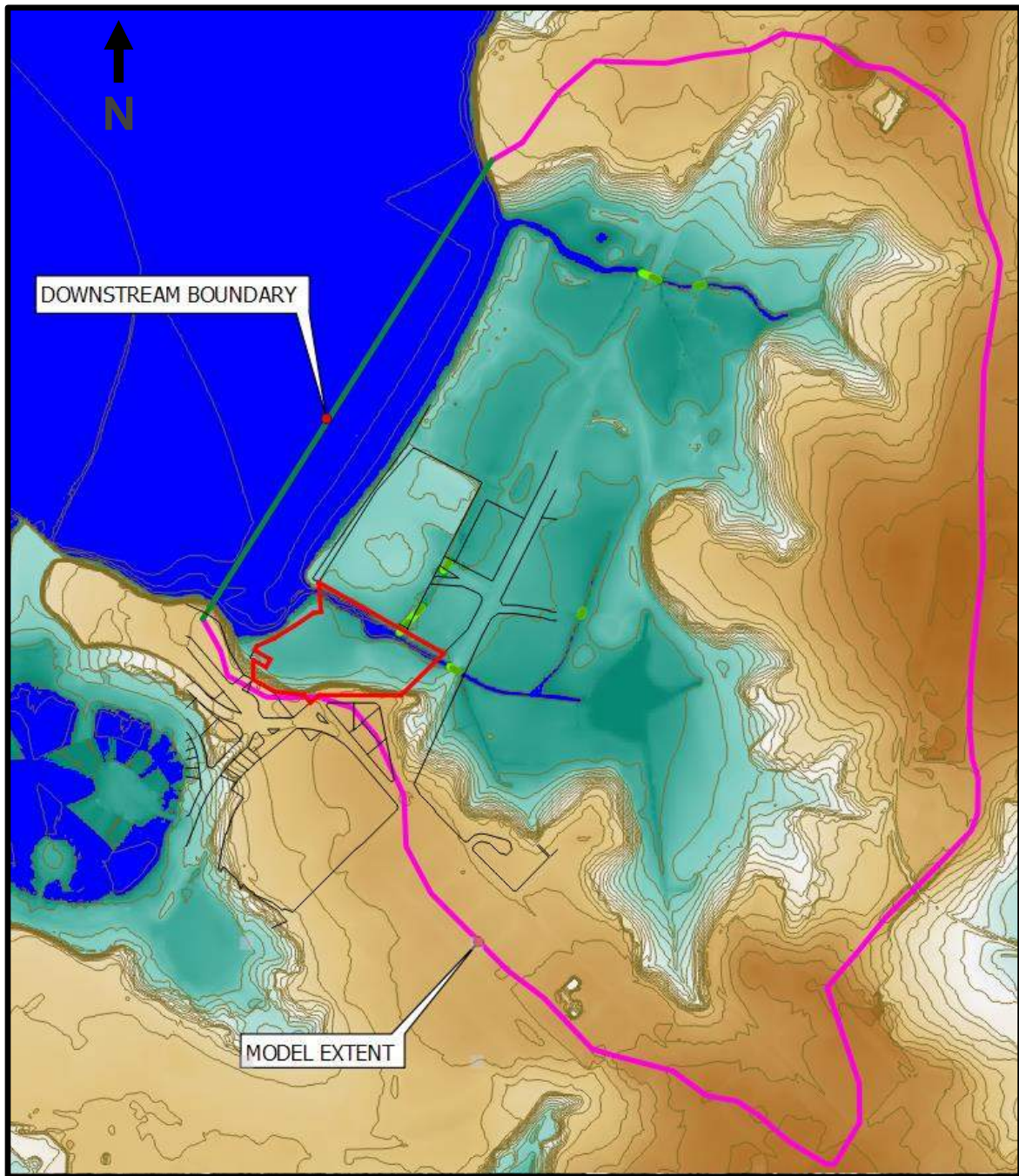


Figure 4 Model Layout

6.2 Existing Scenario

6.2.1 Existing Scenario Results

Hydraulic analysis of the study area in its existing condition was undertaken to establish and quantify existing flooding patterns and behaviour. Key model outputs characterising flood behaviour include flood extents, depths at critical locations, and peak flows. Pre-development modelling results are as follows:

- Runoff in the study area generally sheets across the impervious areas of the upper catchment and through defined flowpaths down the escarpment. The lower part of the catchment is generally flat and ponding occurs on both sides of Gilruth Avenue;

- The northern and southern creeks on Mindil Beach discharge flow to the ocean;
- The creek within the site conveys a peak flow of 11.7 m³/s in a 1% AEP storm event;
- Depth of flow within the creek is up to 2.30 m in the 1% AEP storm event. **Figure 5** shows the 1% AEP pre-development flood depth plot across the catchment **and Figure 6** shows a close-up of the site; and
- Peak velocity within the creek is generally low due to the MHWS tailwater condition.



Figure 5 Pre-Development Q100 Extent



Figure 6 Pre-Development Q100 Extent - Site

6.3 Post-Developed Scenario

The post-developed scenario involves the filling of the building footprint to achieve storm surge immunity. This has been represented conservatively in the post-development model scenario by a block of fill over the entire works extent.

6.3.1 Post-Developed Scenario Results

Post-development modelling results are as follows:

- The flooding behaviour of the catchment is not affected by the filling required over the site to provide storm surge immunity;
- The filling works are located outside of the creek flowpath;
- Peak flood levels, depths, and velocities are unchanged within the creek and across the catchment;
- The post-development 1% AEP depth plot is shown on **Figure 7**.



Figure 7 Post-Development Q100 Extent

6.4 Storm Surge Flood Inundation

As identified in the Northern Territory Storm Surge Mapping for the Darwin Area, the subject site is currently subject to Storm Surge flood inundation. As per correspondence with NTG DENR Water Resources Division (**Appendix B**), the Primary Storm Surge (PSS) has been confirmed as 5.47m AHD. As such the site will be filled to ensure the habitable floor level of the proposed development is at or above the PSS. To ensure the protection of the habitable spaces of the development, ADG propose applying a minimum 300mm freeboard to the PSS, meaning the minimum finished floor of all habitable building areas will be 5.80m AHD. Access and egress to the site will be maintained at all times with reference to the applicable Primary Storm Surge Level to ensure a flood free access point is maintained.

As part of our flood impact assessment, ADG have considered the water displacement effects of the proposed filling of the development site will deliver to the surrounding land parcels, in particular the adjacent Casino. The Northern Territory coastline can experience storm surge, which is an on-shore inundation resulting from strong onshore winds associated with a tropical cyclone. A Tropical Cyclone Storm Tide is the combined effects of a normal tide (low to high astronomical tide) plus storm surge plus wave setup. Storm surge inundation maps have been developed for areas in Greater Darwin and for communities in the Gulf and Top End regions. These maps are based on the projected mean sea level by year 2100 for hazard Return Periods (or Average Recurrence Intervals ARIs).

The storm surge is a macro effect which impacts significant portions of the Northern Territory Coastline. The proposed filling is a micro effect and in consideration of the relative proportionate volume of fill (approx. 35,000m³) required to achieve the proposed finish floor level in comparison to the volume of the ocean affected by the storm surge, the proposed filling of the development site will deliver a negligible impact to the water level of the adjacent waterway and in turn will result in a negligible impact to the Storm Surge inundation level.

7 CONCLUSION

This study has reviewed the hydrology and hydraulics of the local catchment area for pre and post-development scenarios and investigated the impact of the proposed filling on the extent and depth of flooding.

Based on this study the following conclusions have been drawn;

- The site is to be filled to RL 5.80 m AHD to provide protection from storm surge;
- Local flooding is contained within the creek for storm events up to the 1% AEP;
- The extent of filling proposed to provide storm surge protection is located outside of the creek flowpath; and
- The filling works have no impact on peak levels and depths within the creek and through the wider catchment.

Appendix A Architectural Drawings

(Refer to Appendix 1B of the NT EPA Referral)

Appendix B

Correspondence with NTG DENR

Request from Harris Davidson about Storm Surge Level for the property Parcel – 7651, Town of Darwin, NT

The Surface Water group in DENR has carried out desktop study on storm surge level and flooding levels query for the property (**Parcel 7651, Town of Darwin, NT**) and have made the following comments based on available (published) relevant Mappings such as Storm Surge Flood Mappings and digital data as GIS layer:

SURFACE WATER COMMENTS:

- The lot of interest (**Parcel 7651** as shown in Figure 1 below) is affected by both Primary Storm Surge (PSS) and Secondary Storm Surge (SSS) inundation / flooding of 100 year and 1000 year ARI with approximate inundation levels as shown in Table 1 below (*Source: Darwin Area Storm Surge Inundation for 2100, November 2014 / prepared by GHD Pty Ltd for DLRM*).





Figure 1 Location of Primary and Secondary Storm Surge Levels (P – Primary; S – Secondary)

Table 1 Primary and Secondary Storm Surge Levels

Locations	Primary Storm Surge Level (PSS) (mAHD)	Secondary Storm Surge Level (SSS) (mAHD)
P1	5.46	-
P2	5.46	-
P3	5.47	-
P4	5.47	-
P5	5.47	-
P6	5.46	-
S1	-	5.75
S2	-	5.86
S3	-	5.85
S4	-	5.79
S5	-	5.75
S6	-	5.76

This document contains information obtained through a desktop assessment. DENR has made every reasonable effort to provide current and accurate information, but it does not make any guarantees regarding the accuracy or completeness of the information. The information in this document does not constitute professional advice and should not be relied upon. You should obtain your own professional advice.

Appendix C Flood Depth Plots

DARWIN AREA STORM SURGE INUNDATION for 2100

Estimated HAT (Highest Astronomical Tide) Primary Storm Surge Zone (100 Year ARI) Secondary Storm Surge Zone (1,000 Year ARI) Extreme Storm Surge Extent (10,000 Year ARI)

The technical information forming the basis of this storm surge inundation mapping is contained in the following reports prepared for the NT Government by Systems Engineering Australia Pty Ltd (SEA) or GHD:

1. Darwin Storm Tide Mapping Study - 2006
2. High Resolution Storm Tide and Climate Change Impacts Study - 2010
3. Rapid Creek Storm Surge Tide Mapping, Mapping update - 2018

Using the storm surge levels and estimates of Highest Astronomical Tide (HAT) from the above studies, the inundation and HAT extents for the projected mean sea level in 2100 were developed by GHD Pty Ltd in 2014 and 2016 based on the latest topographic information (2009, 2011 and 2015). This map is produced by the NT Government for the Darwin area based on the storm surge inundation and HAT extents.

The map shows the total storm surge (technical terminology is storm tide) hazard risk due to tropical cyclones in terms of the ocean water level comprising the combined effects of astronomical tide plus storm surge plus wave setup for two statistical Average Recurrence Intervals (ARI). It also shows the estimated HAT extent. The 'Primary Storm Surge Zone' shown on the map refers to the extent of inundation for a storm tide event of 100 year ARI (with approximately a 40% chance of exceedance within any 50 year period). The 'Secondary Storm Surge Zone' shown on the map refers to the further extent of inundation for a storm tide event of 1000 year ARI (with approximately a 5% chance of exceedance within any 50 year period). The extents do not include the possible effects of very localised wave runup.

Average Recurrence Interval (ARI) is also called Return Period of the Risk and is defined as the 'average' number of years between successive events of the same or greater magnitude. The ARI of a storm tide event gives no indication of when a storm tide of that magnitude may occur.

Highest Astronomical Tide (HAT) is the highest ocean level expected due to any combination of astronomical conditions alone and has an equivalent ARI of approximately 18.6 years. The HAT extent is used in this map as the reference for storm surge inundation. It is based on estimates of HAT levels derived from numerical hydrodynamic modelling that has not been verified by long term in situ measurements.

The Storm Surge information shown on the map is considered as indicative only.

For detailed interpretation of this map and further information contact:
 Department of Environment, Parks and Water Security, Water Resources Division
 4th Floor Goyder Centre, 25 Chung Wah Terrace,
 Palmerston, Northern Territory.
 T: (08) 8999 4455 Email: waterresources@nt.gov.au
 PO Box 496, Palmerston, NT, 0831

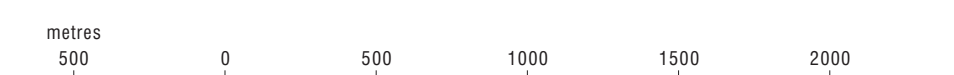
Storm surge reports and maps are available on <https://nt.gov.au/floods>
 This map has been updated in **September 2020** and supersedes all previous versions.

GENERAL FEATURES

Local Government Area	STUART PARK
Property / Road Boundaries (July 2020)	
Suburbs / Localities	
Major Road	
Minor Road	
Park / Reserve	
Railway	
Gas pipeline	
Watercourse, Lake or Lagoon	
Mangroves	

Data Source:
 Cadastre, road centrelines and administrative information
 Northern Territory Department of Infrastructure, Planning and Logistics.

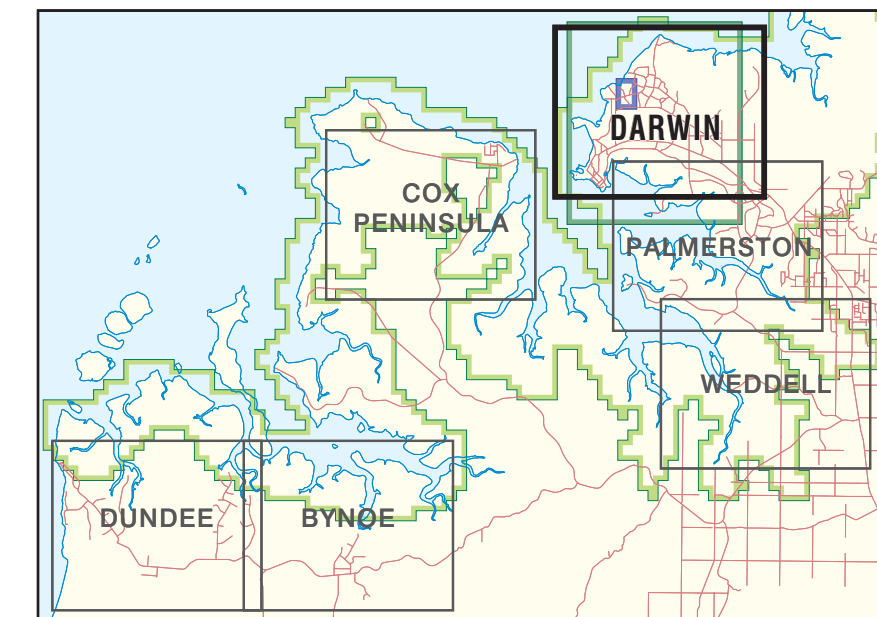
Map prepared by:
 Department of Environment, Parks and Water Security,
 Geospatial Services Branch
 Drawing No. DENR2020066



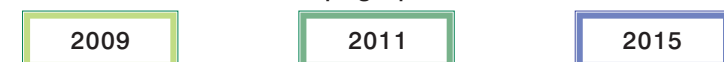
Black numbered lines are 2500 metre intervals of the Map Grid of Australia (MGA) Zone 52 Transverse Mercator Projection Horizontal Datum: GDA 94

This map was produced on the Geocentric Datum of Australia 1994 (GDA 94)

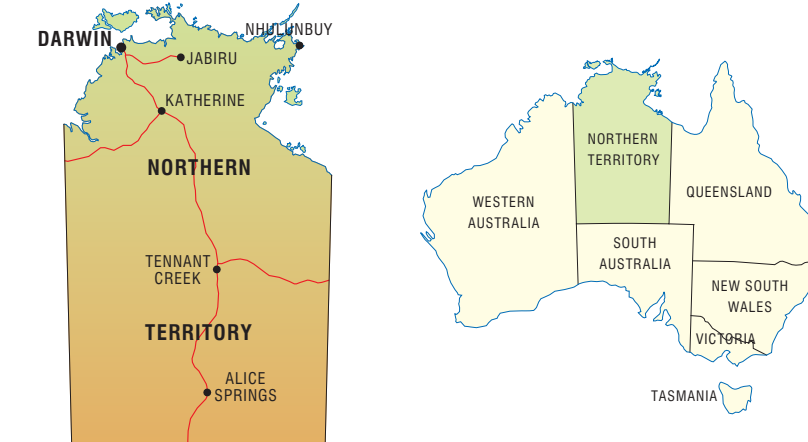
INDEX TO DARWIN REGION STORM SURGE MAPS



Extent of topographic information



MAP LOCATION



1% AEP Post-Development Flood Depth

- <= 0.25 m
- 0.25 - 0.5 m
- 0.5 - 1 m
- 1 - 1.5 m
- > 1.5 m



A	13.01.21 ORIGINAL ISSUE	JM	HD
Rev	Date	Description	By Chk

<p>Brisbane Office 584 Milton Road (Off Sylvan Road), Toowong, Queensland 4066, Australia PO Box 1492, Toowong BC, Queensland 4066 T 1360 057 402 F +617 3811 2266 E info@adg.com W www.adg.com</p> <p><small>BRISBANE SYDNEY MELBOURNE GOLD COAST SUNSHINE COAST DARWIN PERTH</small></p>	<p>Client KTT INVESTMENTS PTY LTD</p> <p>Project Name LITTLE MINDIL BEACH THE GARDENS, NORTHERN TERRITORY</p>
--	---


Discipline CIVIL	Status	Title POST-DEVELOPMENT FLOOD DEPTH - 1% AEP
Designed By HD	Checked By HD	Approved By
Project No. 23085	Drawn By JM	Scale at A1 1:2500

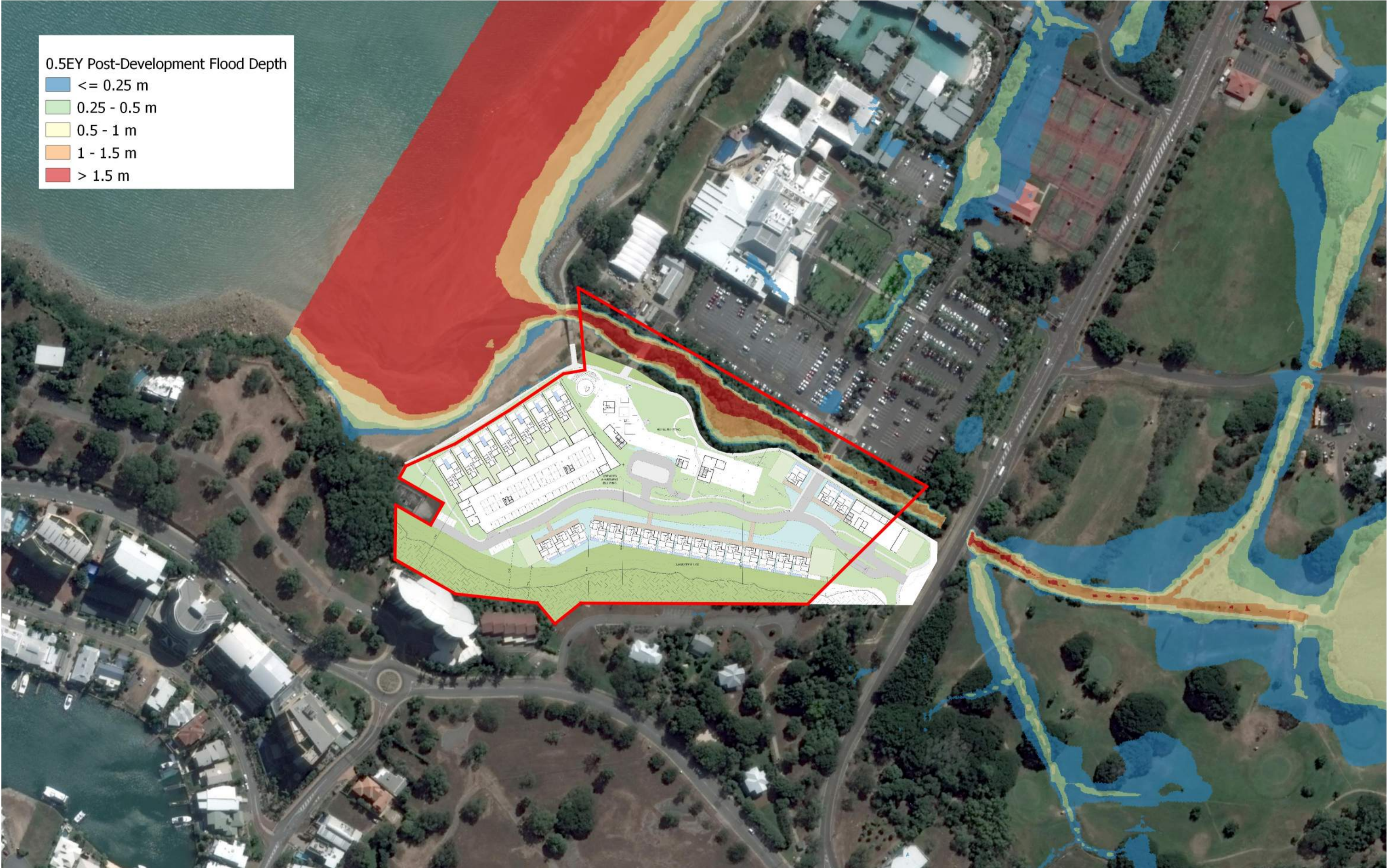
<p>The concepts and information contained in this document are the copyright of ADG Engineers (Australia) Pty Ltd. Use or copying of the document in whole or in part without the written permission of ADG Engineers (Australia) Pty Ltd constitutes an infringement of copyright. Do not scale drawings. If in doubt, ask!</p>	<p>Drawing No. HA-02</p> <p>Revision A</p>
--	--

1% AEP Post-Development Flood Depth

- <= 0.25 m
- 0.25 - 0.5 m
- 0.5 - 1 m
- 1 - 1.5 m
- > 1.5 m




<p>A 13.01.21 ORIGINAL ISSUE</p> <p>Rev Date Description</p>	<p>JM HD</p> <p>By Chk</p>	 <p>ADG</p> <p>Brisbane Office 584 Milton Road (Off Sylvan Road), Toowong, Queensland 4066, Australia PO Box 1492, Toowong BC, Queensland 4066 T 1360 057 402 F +617 3871 2266 E info@adg.com W www.adg.com</p> <p><small>BRISBANE SYDNEY WELLSBORNE GOLD COAST SUNSHINE COAST DARWIN PERTH</small></p>	<p>Client KTT INVESTMENTS PTY LTD</p> <p>Project Name LITTLE MINDIL BEACH THE GARDENS, NORTHERN TERRITORY</p>	<p>Discipline CIVIL</p> <p>Designed By HD</p> <p>Project No. 23085</p>	<p>Checked By HD</p> <p>Drawn By JM</p>	<p>Status</p> <p>Approved By</p> <p>Scale at A1 1:2500</p>	<p>Title POST-DEVELOPMENT FLOOD DEPTH - 1% AEP</p> <p>Crawing No. HA-04</p> <p>Revision A</p>
--	----------------------------	---	---	--	---	--	---



0.5EY Post-Development Flood Depth

- <= 0.25 m
- 0.25 - 0.5 m
- 0.5 - 1 m
- 1 - 1.5 m
- > 1.5 m

A	13.01.21	ORIGINAL ISSUE	JM	HD
Rev	Date	Description	By	Chk

 <p>ADG Brisbane Office 584 Milton Road (Off Sylvan Road), Toowong, Queensland 4066, Australia PO Box 1492, Toowong BC, Queensland 4066 T 1360 657 402 F +617 3811 2266 E info@adg.com W www.adg.com BRISBANE SYDNEY MELBOURNE GOLD COAST SUNSHINE COAST DARWIN PERTH</p>	
---	--

Client	KTT INVESTMENTS PTY LTD
Project Name	LITTLE MINDIL BEACH THE GARDENS, NORTHERN TERRITORY

Discipline	CIVIL
Designed By	HD
Checked By	HD
Project No.	23085
Drawn By	JM

Status	Approved By
Scale	at A1 1:2500

Title	POST-DEVELOPMENT FLOOD DEPTH - 0.5EY
Drawing No.	HA-05
Revision	A


The concepts and information contained in this document are the copyright of ADG Engineers & Architects Pty Ltd. Use or copying of this document in whole or in part without the written permission of ADG Engineers & Architects Pty Ltd constitutes an infringement of copyright. Do not scale drawings. If in doubt, ask!



0.2EY Post-Development Flood Depth

- <= 0.25 m
- 0.25 - 0.5 m
- 0.5 - 1 m
- 1 - 1.5 m
- > 1.5 m

A	13.01.21	ORIGINAL ISSUE	JM	HD
Rev	Date	Description	By	Chk

 <p>ADG Brisbane Office 584 Milton Road (Off Sylvan Road), Toowong, Queensland 4066, Australia PO Box 1492, Toowong BC, Queensland 4066 T 1360 057 402 F +617 3811 2266 E info@adg.com W www.adg.com BRISBANE SYDNEY MELBOURNE GOLD COAST SUNSHINE COAST DARWIN PERTH</p>	
---	--

Client	KTT INVESTMENTS PTY LTD
Project Name	LITTLE MINDIL BEACH THE GARDENS, NORTHERN TERRITORY

Discipline	CIVIL
Designed By	HD
Checked By	HD
Project No.	23085
Drawn By	JM

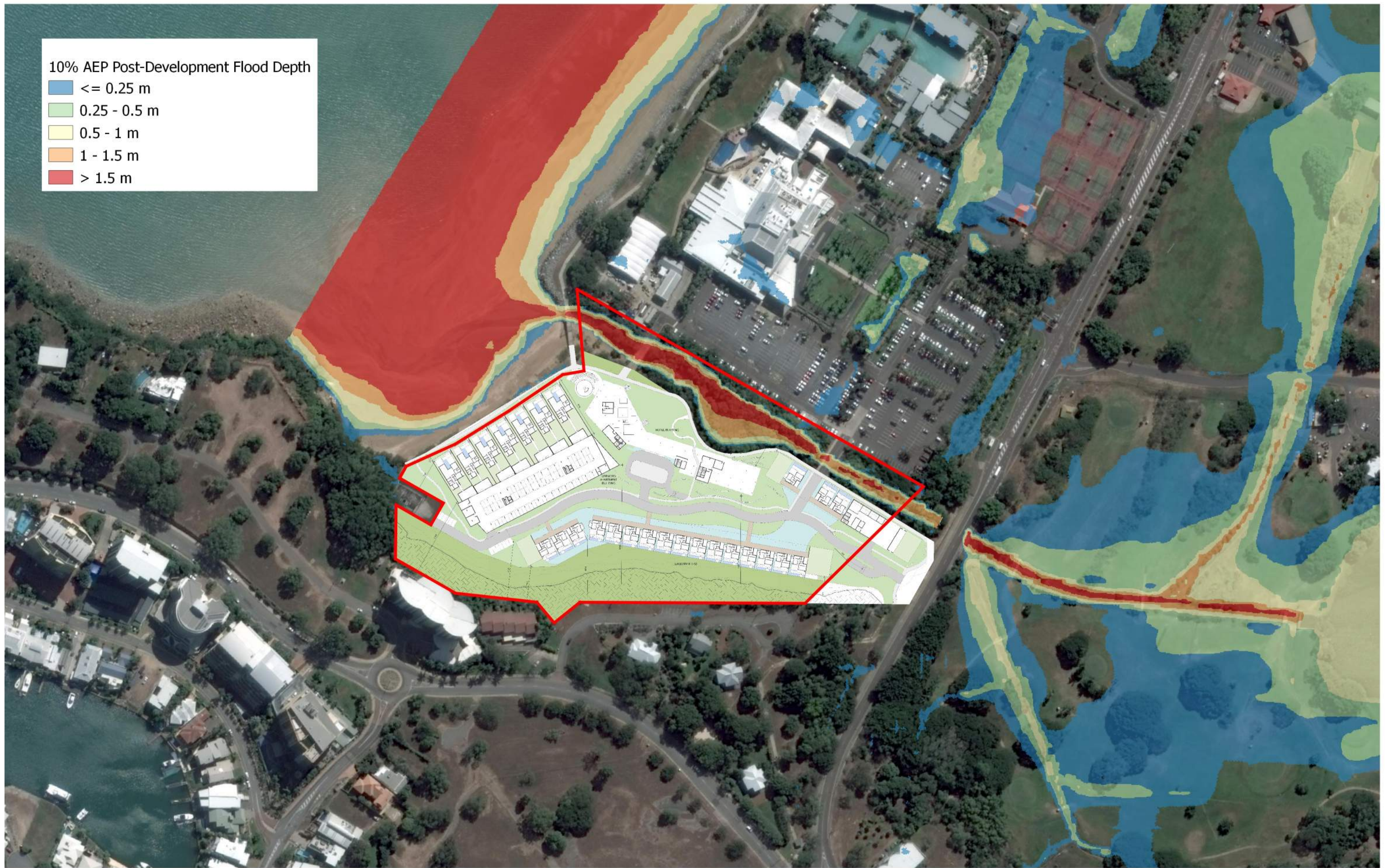
Status	Approved By
Scale	at A1 1:2500

Title	POST-DEVELOPMENT FLOOD DEPTH - 0.2EY
Drawing No.	HA-06
Revision	A

The concepts and information contained in this document are the copyright of ADG Engineers (Australia) Pty Ltd. Use or copying of the document in whole or in part without the written permission of ADG Engineers (Australia) Pty Ltd constitutes an infringement of copyright. Do not scale drawings. If in doubt, ask!

10% AEP Post-Development Flood Depth

- <= 0.25 m
- 0.25 - 0.5 m
- 0.5 - 1 m
- 1 - 1.5 m
- > 1.5 m



A	13.01.21	ORIGINAL ISSUE	JM	HD
Rev	Date	Description	By	Chk

 <p>ADG Brisbane Office 584 Milton Road (Off Sylvan Road), Toowong, Queensland 4066, Australia PO Box 1492, Toowong BC, Queensland 4066 T 1360 057 402 F +617 3811 2266 E info@adg.com W www.adg.com BRISBANE SYDNEY MELBOURNE GOLD COAST SUNSHINE COAST DARWIN PERTH</p>	
---	--

Client	KTT INVESTMENTS PTY LTD
Project Name	LITTLE MINDIL BEACH THE GARDENS, NORTHERN TERRITORY

Discipline	CIVIL
Designed By	HD
Checked By	HD
Project No.	23085
Drawn By	JM

Status	Approved By	Scale at A1
1:2500		


Title	POST-DEVELOPMENT FLOOD DEPTH - 10% AEP
Drawing No.	HA-07
Revision	A



5% AEP Post-Development Flood Depth

- <= 0.25 m
- 0.25 - 0.5 m
- 0.5 - 1 m
- 1 - 1.5 m
- > 1.5 m

A	13.01.21	ORIGINAL ISSUE	JM	HD
Rev	Date	Description	By	Chk

 <p>ADG Brisbane Office 584 Milton Road (Off Sylvan Road), Toowong, Queensland 4066, Australia PO Box 1492, Toowong BC, Queensland 4066 T 1360 657 402 F +617 3811 2266 E info@adg.com W www.adg.com BRISBANE SYDNEY MELBOURNE GOLD COAST SUNSHINE COAST DARWIN PERTH</p>	
---	--

Client	KTT INVESTMENTS PTY LTD
Project Name	LITTLE MINDIL BEACH THE GARDENS, NORTHERN TERRITORY

Discipline	CIVIL
Designed By	HD
Checked By	HD
Project No.	23085
Drawn By	JM
Scale	at A1 1:2500

Status	Approved By
Scale	at A1 1:2500

Title	POST-DEVELOPMENT FLOOD DEPTH - 5% AEP
Drawing No.	HA-08
Revision	A

The concepts and information contained in this document are the copyright of ADG Engineers & Architects Pty Ltd. Use or copying of this document in whole or in part without the written permission of ADG Engineers & Architects Pty Ltd constitutes an infringement of copyright. Do not scale drawings. If in doubt, ask!



2% AEP Post-Development Flood Depth

- <= 0.25 m
- 0.25 - 0.5 m
- 0.5 - 1 m
- 1 - 1.5 m
- > 1.5 m

A	13.01.21	ORIGINAL ISSUE	JM	HD
Rev	Date	Description	By	Chk

ADG

Brisbane Office
 584 Milton Road (Off Sylvan Road),
 Toowong, Queensland 4066, Australia
 PO Box 1492, Toowong BC, Queensland 4066
 T 1300 657 402 F +617 3871 2266
 E info@adg.com W www.adg.com

BRISBANE | SYDNEY | MELBOURNE | GOLD COAST | SUNSHINE COAST | DARWIN | PERTH

Client
KTT INVESTMENTS PTY LTD

Project Name
**LITTLE MINDIL BEACH
 THE GARDENS, NORTHERN TERRITORY**

Discipline CIVIL	Status
Designed By HD	Checked By HD
Project No. 23085	Drawn By JM
Approved By	Scale at A1 1:2500

The concepts and information contained in this document are the copyright of ADG Engineers (Australia) Pty Ltd. Use or copying of the document in whole or in part without the written permission of ADG Engineers (Australia) Pty Ltd constitutes an infringement of copyright. Do not scale drawings. If in doubt, ask!

Title POST-DEVELOPMENT FLOOD DEPTH - 2% AEP	Revision A
Crawing No. HA-09	

Brisbane

584 Milton Road, Cnr Sylvan Road
Toowong, QLD 4066
PO Box 1492
Toowong BC, QLD 4066
Phone: +61 07 3300 8800
Email: info@adgce.com

Melbourne

Suite 321, 838 Collins Street,
Docklands VIC 3008
Phone: +61 03 9269 6300
Email: info@adgce.com

Sunshine Coast

Level 3, 2 Emporio Place
Maroochydore, QLD 4558
PO Box 5014
Maroochydore BC, QLD 4558
Phone: +61 07 5444 0400
Email: info@adgce.com

Darwin

Tenancy 3, Lvl 1, 5 Edmunds St,
Darwin NT 0800
GPO Box 2422
Darwin, NT 0801
Phone: +61 08 8944 6300
Email:

Sydney

13 / 20 Berry Street,
North Sydney NSW 4006
Phone: +61 02 8908 5400
Email: info@adgce.com

Gold Coast

Suite 201, Level 1, 1 Short Street
Southport, QLD 4215
PO Box 208
Southport, QLD 4215
Phone: +61 07 5552 4700
Email: info@adgce.com

Toowoomba

Tenancy 8, 158 Margaret Street
Toowoomba QLD 4350, Australia
Phone: +61 07 3300 8800
Email: info@adgce.com

Perth

Level 3, Suite 15, 23 Railway Road,
Subiaco, WA 6008
Phone: +61 08 9217 0900
Email: info@adgce.com

